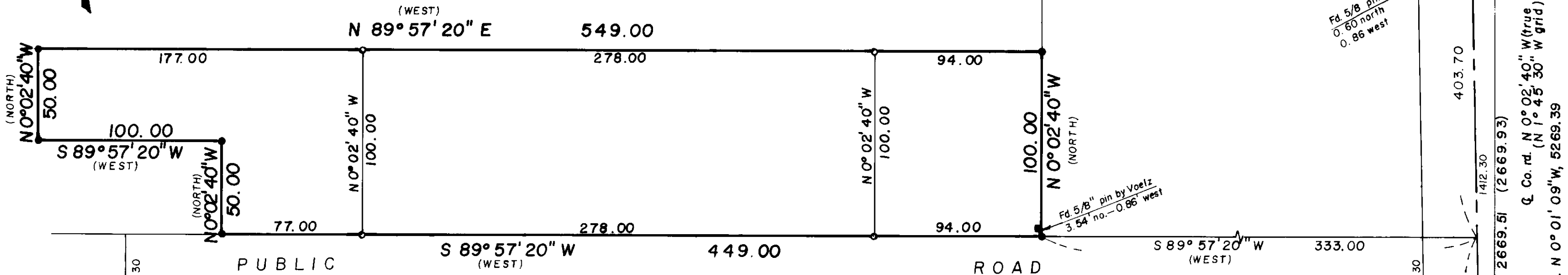


BASIS of BEARING

Fwd. bearing as published by the
U.S.C. & G.S. from Δ College to
Δ Valley
Grid to true = 1° 42' 50"
118° 05' west Longitude

School District



REGISTERED
OREGON
LAND SURVEYOR
Duane I. Griffith
JULY 10, 1964
DUANE I. GRIFFITH
644

BAGETT-GRIFFITH-FERGUSON

La Grande, Oregon
MAP OF SURVEY

Parcel in the SE1/4 of the NW1/4
Section 3; T 3 S, R 38 E, WM
City of Island City
Union County, Oregon

SURVEYED FOR	Dale Young	
SURVEYED BY	D.I.G.	Oct. 1971
Scale: 1" = 50'	Drawn by: D.I.G.	Oct. 1971

LEGEND

- Found monument of record
- Found monument, identified by parcel evidence
- Set 5/8" x 30" iron pin with plastic cap marked BGF SURVEY MK
- Set 1/2" x 24" iron pin
- () Record bng. & dist. if different than true

REFERENCE MATERIAL

- Deeds: MF 33721
Book 159 page 571 - 575
Book 157 page 151
- Recorded surveys:
20 - 67 12 - 65
27 - 69 4 - 69
11 - 65

Plat of Mt. View Addition
County road, maps & notes
Fed. aid, project no. S-111(1), O.S.H.D. Map no. 78-7-1

