

BASIS OF BEARING  
Survey no. 18-70

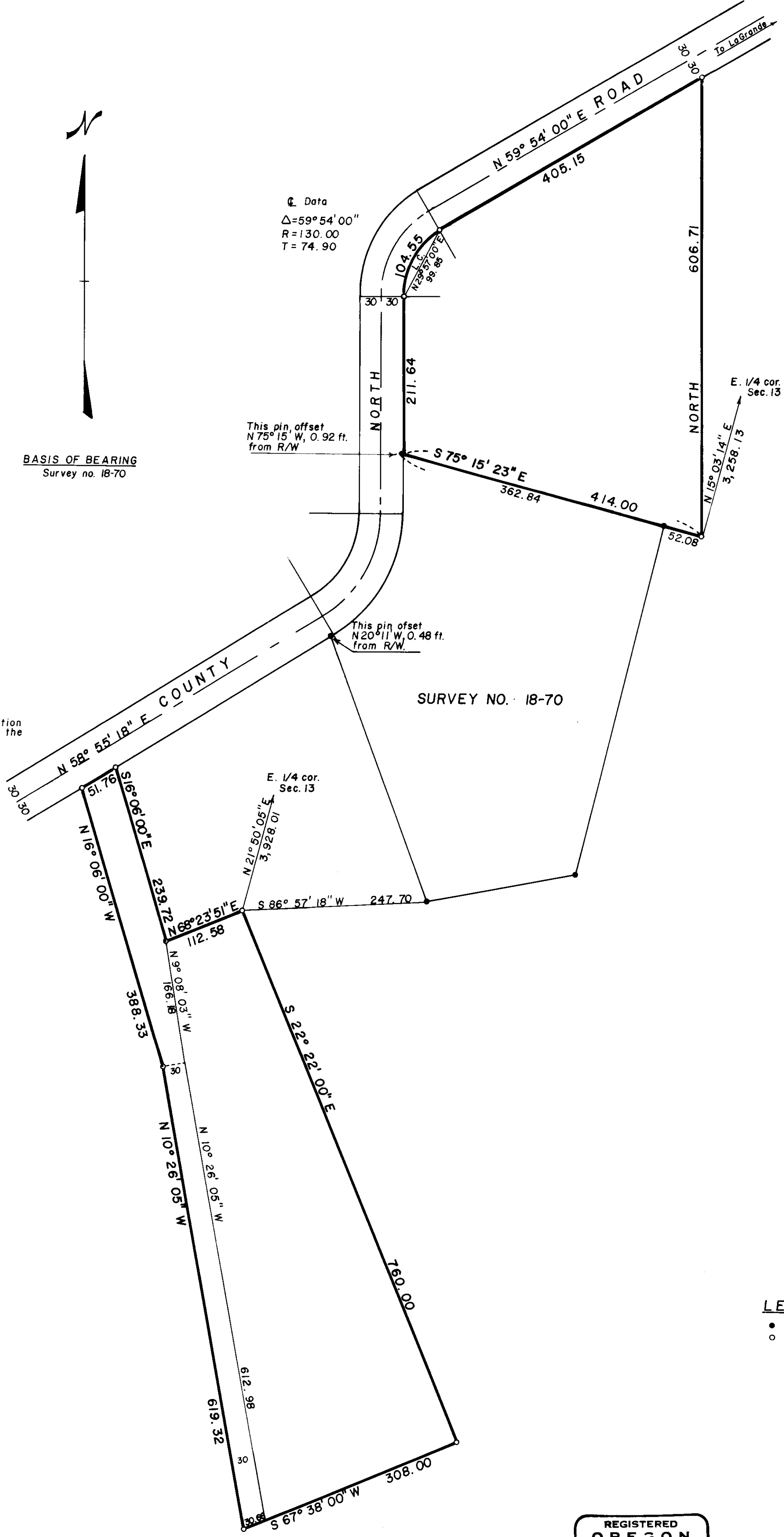
Q. Data  
 $\Delta = 59^\circ 54' 00''$   
 $R = 130.00$   
 $T = 74.90$

This pin, offset  
 $N 75^\circ 15' W, 0.92 \text{ ft.}$   
from R/W

This pin offset  
 $N 20^\circ 11' W, 0.48 \text{ ft.}$   
from R/W

E. 1/4 cor.  
Sec. 13

NOTE  
County road position  
is as located on the  
ground.



LEGEND

- Found monument of record.
- Set 1/2" x 24" iron pin.

REGISTERED  
OREGON  
LAND SURVEYOR

*Duane I. Griffith*

JULY 10, 1964  
DUANE I. GRIFFITH  
644

<b>BAGETT-GRIFFITH-FERGUSON</b>		
LaGrande, Oregon		
Map of Survey		
Parcels in the N.E. 1/4		
Section 24		
T 3 S, R 37 E, W.M.		
Union County, Oregon		
SURVEYED FOR	ROY BECHTEL	
SURVEYED BY	D.I.G.	Apr. 1971
Scale: 1" = 100'	Drawn by: DIG	May 1971