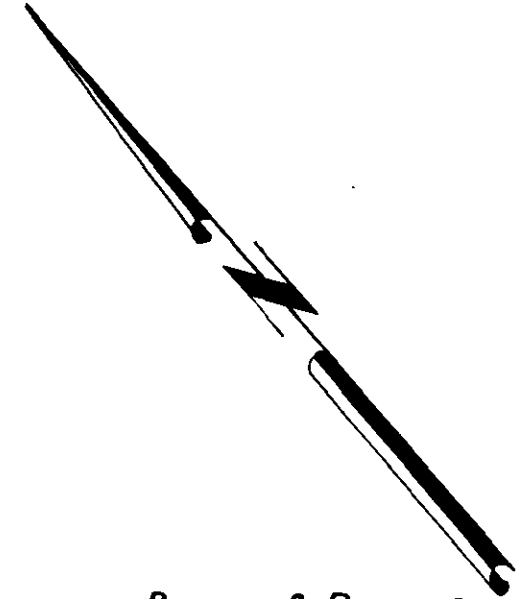
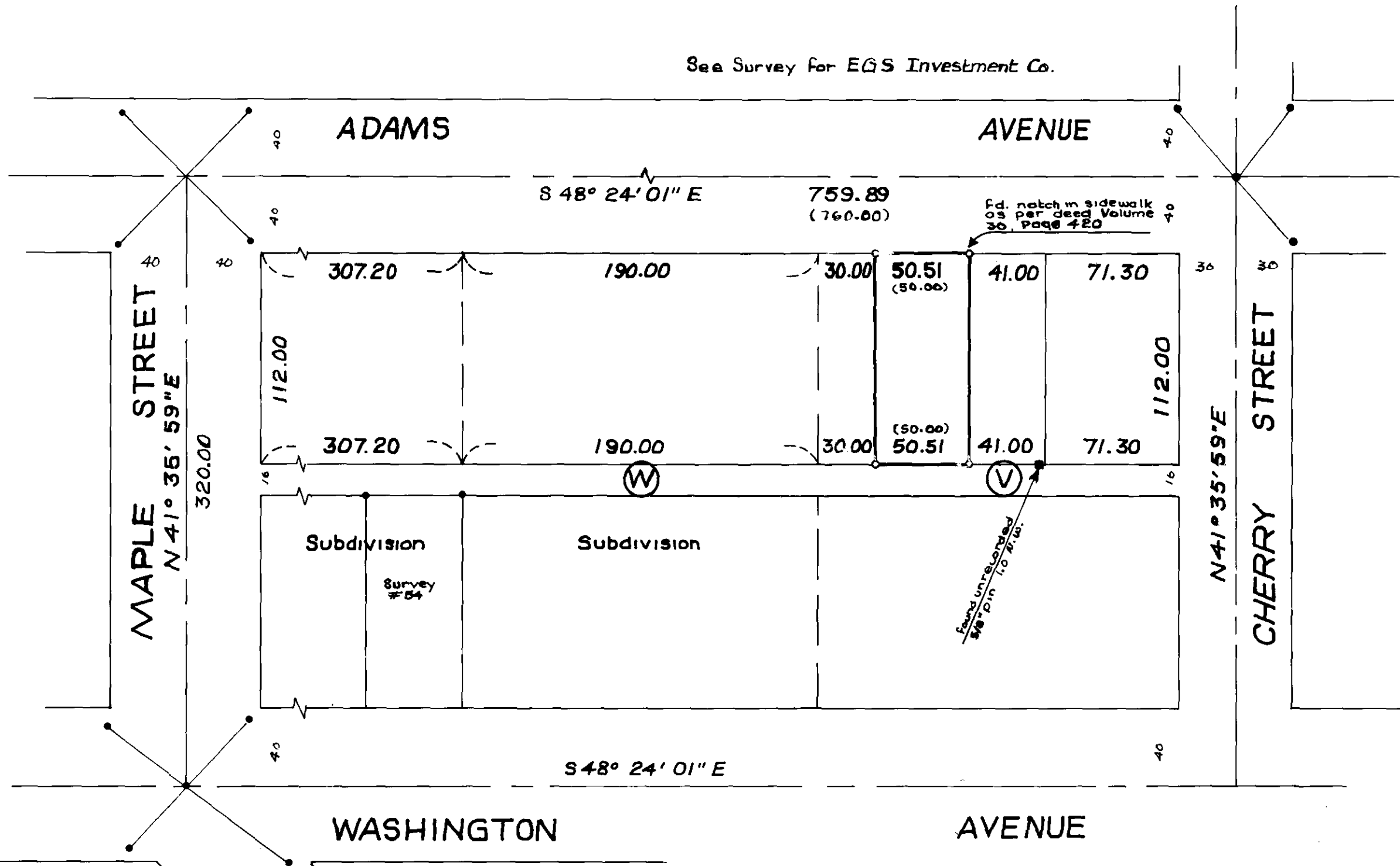


See Survey for EGS Investment Co.



Basis of Bearing
 Forward bearing as published
 by U.S.C. + G.S. from College
 to Valley

LEGEND:

- Fd. Monument of Record
- Fd. unrecorded monument
- Set 5/8" x 30" iron pin with plastic cap marked B-G-F Survey Mk.
- () Record bearing and distance

REGISTERED
OREGON
 LAND SURVEYOR

Handwritten Signature

JULY 10, 1964
 DUANE I. GRIFFITH
 644

BAGETT-GRIFFITH-FERGUSON		
La Grande, Oregon		
Map of Survey		
Lot in Block V of		
Coogan's 2 nd Addition		
to		
LA GRANDE, OREGON		
SURVEYED FOR	C. P. Hutchens	
SURVEYED BY	D. I. G.	Aug. 1971
Scale: 1"=60'	Drawn by: Edg.	Aug. 1971