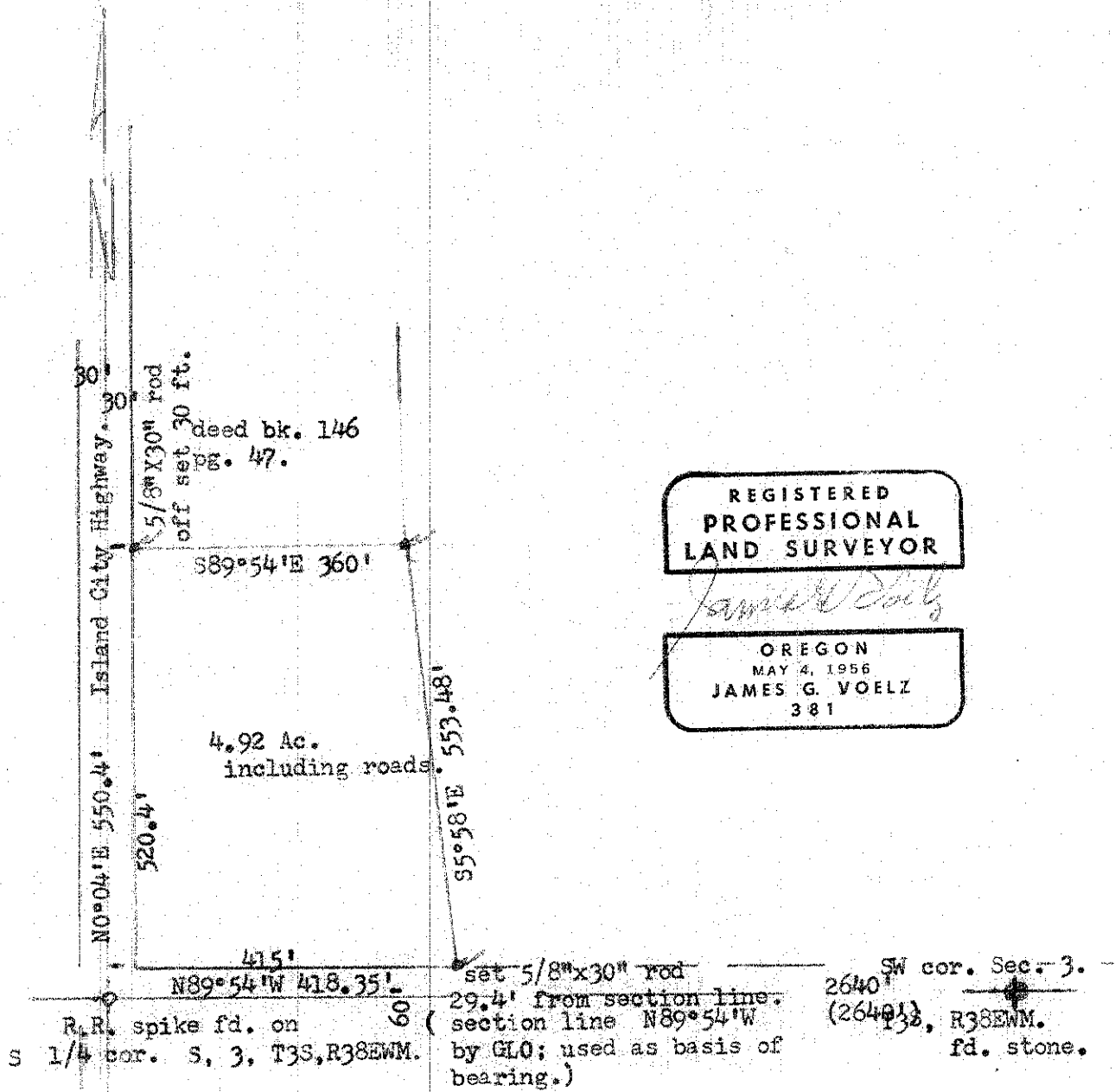


La Grande, Country Club.
La Grande, Oregon

Dec. 7, 1970

scale 1" = 200'
set 5/8" X 30" steel rods.
() data of record.



REGISTERED
PROFESSIONAL
LAND SURVEYOR

OREGON
MAY 4, 1956
JAMES G. VOELZ
381

74-70

74-1970