

37-70

C.H.

June 5, 1970

John H. Friswold

set 5/8" steel rods in line with power poles for corner reference marks.

true point of beginning.

577  
N 89° 44' W

legal description;

Beginning at the southeast corner of section 6, T2S, R39EWM and running N89°44'W a distance of 902.4 feet more or less to the east edge of Union Pacific Railroad road right of way line. thence N14°35'E on the east edge of said railroad R/W line a distance of 1264.5 feet to the true point of beginning.

thence N14°35'E a distance of 369.5 feet on the east edge of said R/W line. ;

thence S81°29'E 495 feet more or less to the west edge of county road right of way. ;

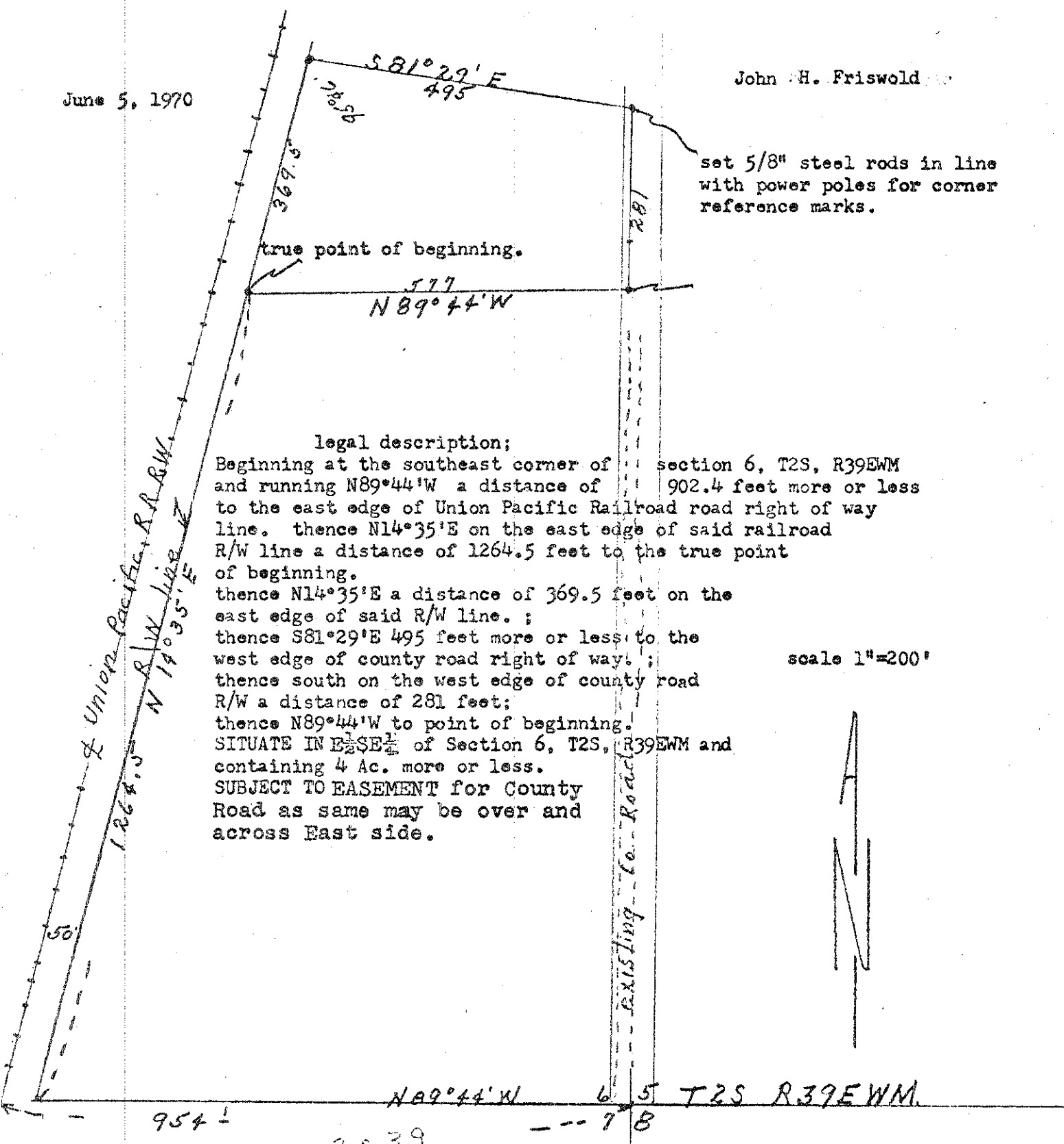
thence south on the west edge of county road R/W a distance of 281 feet;

thence N89°44'W to point of beginning.

SITUATE IN E 1/4 SE 1/4 of Section 6, T2S, R39EWM and containing 4 Ac. more or less.

SUBJECT TO EASEMENT for County Road as same may be over and across East side.

scale 1"=200'



954

2539  
4603

N 89° 44' W 6 5 T 2 S R 39 E W M

REGISTERED  
OREGON  
LAND SURVEYOR  
*James G. Voelz*  
MAY 4, 1956  
JAMES G. VOELZ  
381