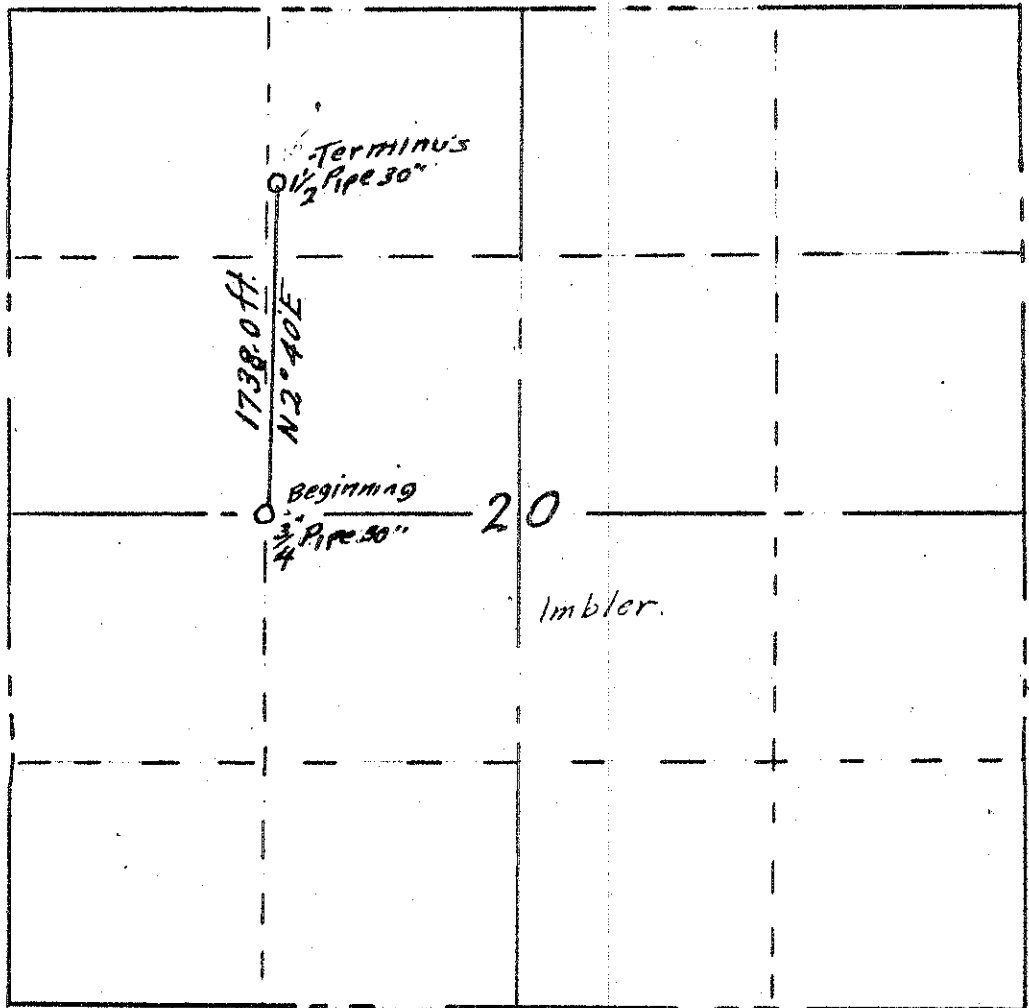


32-70

Co Rd # 768

1 S 39 20

T 15 R 39 E.W.M.



Ver. 21° 30'
 June 1955
 Scale 1/4 inch = 1000 ft.

Road No. _____

Opened by a resolution by the County Court.

Commencing at the Southwest corner of the SE 1/4 of the NW 1/4 of Section 20, T 15 R 39 E.W.M., at a 3/4" pipe, thence N 2° 40' E, a distance of 1738.0 feet, set a 1 1/2 inch pipe 30" long for the Terminus. The right-of-way to be sixty (60) feet in width.

S. B. Morgan
 County Surveyor

32-70