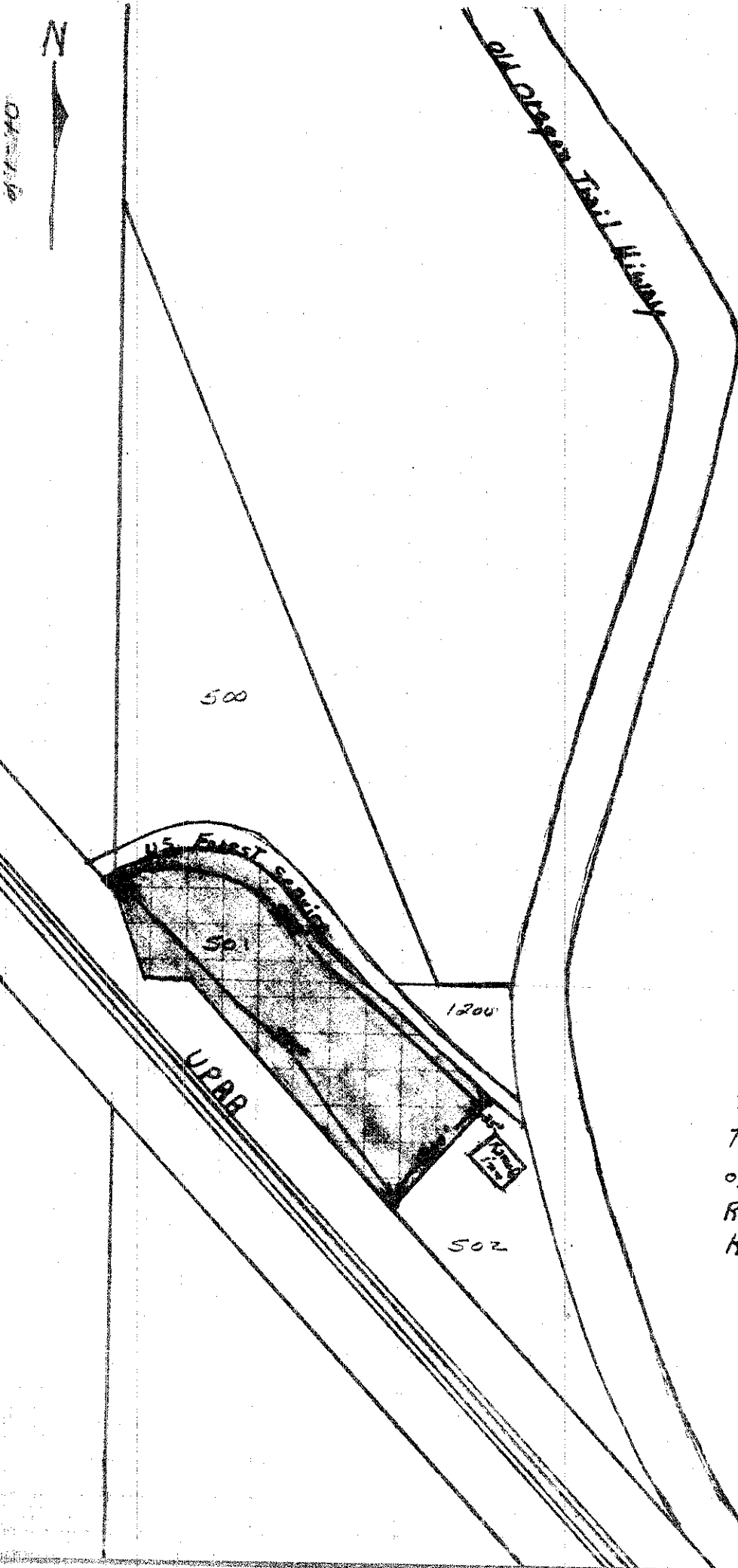


01-16



1535
501

859^{ft} along S. side of U.S.F.S. Road
To U.P.R.R. Right of way crossing
Then 757' ft. SW. along north side
of U.P.R.R. Then 200' n.w. To U.S.F.S.
Road 35' from n.w. corner of
Kamela inn.

data furnished by Jim
Everett

01-16