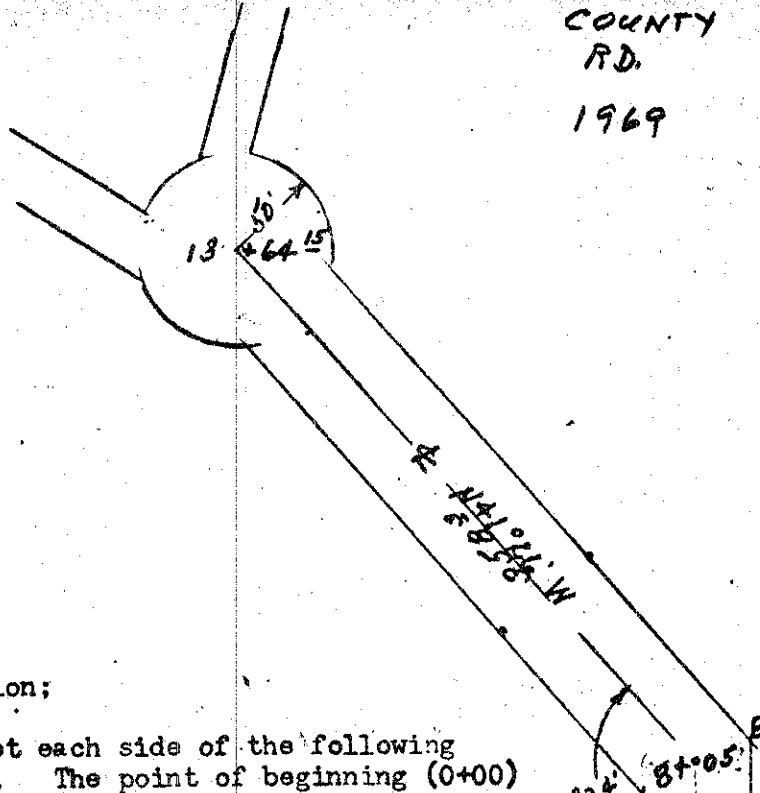


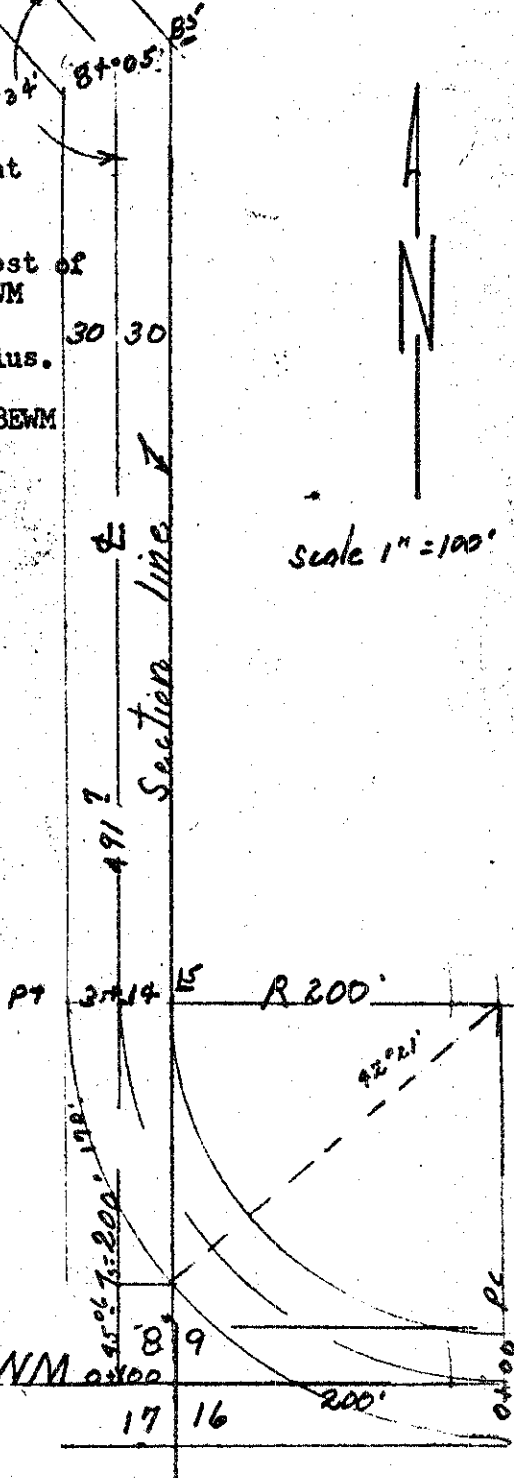
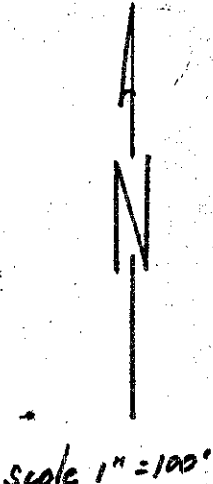
COUNTY
RD.
1969

12-70



Center line description;

A strip of land 30 feet each side of the following described center line. The point of beginning (0+00) being on the south boundary of Section 9, T2S, R38EWM a distance of 170 feet east of the southwest corner of Section 9, T2S, R38EWM. Running thence on a curve right with radius of 200 feet a distance of 314.5 feet, which is a point 30 feet west and 200 feet north of south east corner of Section 8, T2S, R38EWM. Thence north 30 feet west of and parallel to the east boundary of section 8, T2S, R38EWM a distance of 491.7 feet. Thence N 41° 26' W a distance of 358.3 feet. Thence ending in a cul-de-sac of 50 foot radius. SITUATE IN SE 1/4 SE 1/4 of section 8, T2S, R38EWM and SW 1/4 SW 1/4 of Section 9, T2S, R38EWM, and NW 1/4 NW 1/4 of Section 16, T2S, R38EWM Containing 0.039 Ac.



REGISTERED
OREGON
LAND SURVEYOR

James G. Voelz

MAY 4, 1956
JAMES G. VOELZ
331