

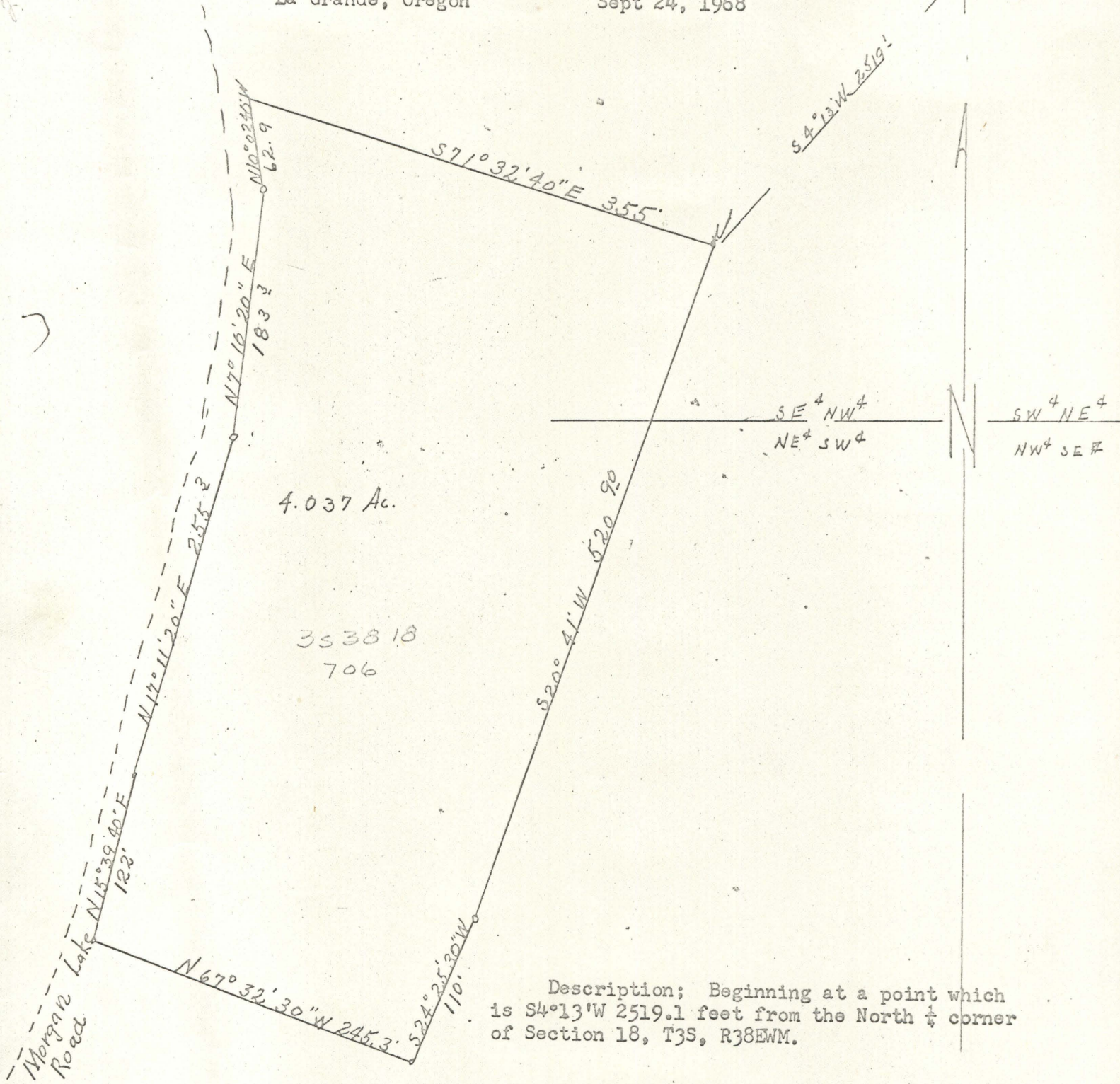
89-69
C.A

67-62

Glenn Lester Realty
909 Main St.
La Grande, Oregon

Sept 24, 1968

N 1/4 Cor Sec. 18, T3S, R38E
2" Pipe



4.037 Ac.

3538 18
706

Description; Beginning at a point which is S4°13'W 2519.1 feet from the North 1/4 corner of Section 18, T3S, R38EWM.

- th. S20°41'W 520.90 feet;
 - th. S24°25'30" W 110 Feet;
 - th. N67°32'30"W 245.3 feet;
 - th. N15°39'40"E 122.0 feet;
 - th. N17°11'20"E 255.3 feet;
 - th. N7°10'20"E 183.3 feet;
 - th. N10°02'40"W 62.9 feet;
 - th. S71°32'40"E 355.0 feet; to point of beginning.
- Being in the SE 1/4 NW 1/4 and NE 1/4 SW 1/4 of Section 18, T3S, R38EWM and containing 4.037 acres more or less.

REGISTERED
OREGON
LAND SURVEYOR

James G. Voelz

MAY 4, 1958
JAMES G. VOELZ
381