

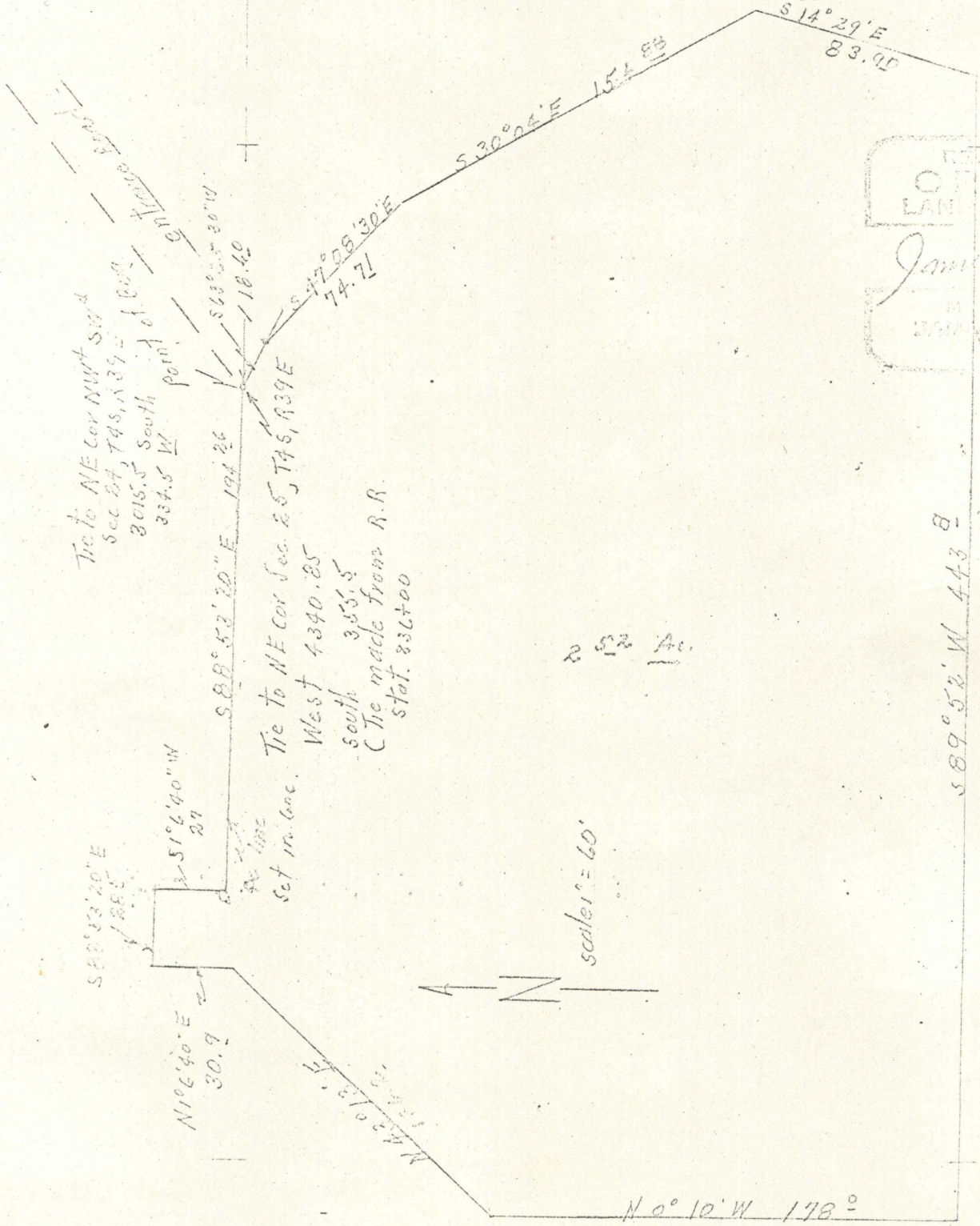
Mrs. W.H. Hutchinson  
Union, Oregon

Aug. 6, 1968

Description; Beginning at a point which is 4340.85 ft. west and 355.5 ft. south of the northeast corner of Section 25, T4S, R39EWM. (said point being determined from tie to said section corner made from Station 836+00 on Union Pacific RR. right-of-way line: ) From said point running thence;

S63°25'30"E 18.6 ft.;  
 S47°08'30"E 74.71 ft.;  
 S30°04'E 154.88 ft.;  
 S14°29'W 83.9 ft.;  
 S89°52'W 443.6 ft.;  
 N0°10'W 178.0 ft.;  
 N43°13'E 136.2 ft.;  
 N1°6'40"E 30.9 ft.;  
 S88°53'20"E 28.5 ft.;  
 S1°6'40"W 27 ft.;  
 S88°53'20"E 194.26 ft. to point of beginning.

SITUATE IN NW¼NW¼ section 25, T4S, R39EWM.



REGISTERED  
 C. H. HUGHES  
 LAND SURVEYOR  
 James W. Hughes  
 Surveyor  
 201

83-69

2.52 Ac.

scale 1" = 60'

