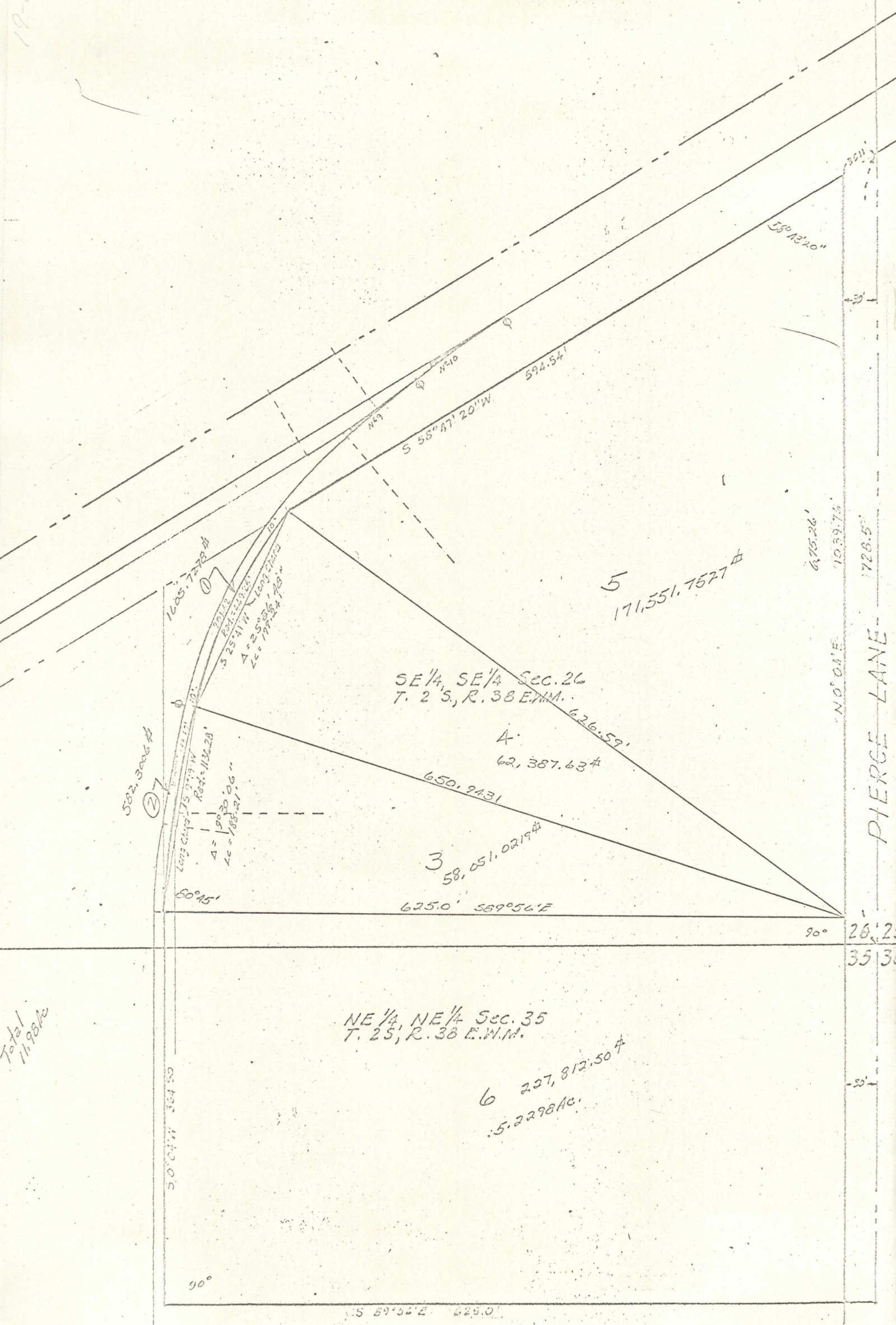


Total Ac 11.98 Ac

19-69



SE 1/4, SE 1/4 Sec. 26  
T. 2 S, R. 38 E. W.M.

NE 1/4, NE 1/4 Sec. 35  
T. 2 S, R. 38 E. W.M.

5  
171,551.7527 #

3  
58,051,0219 #

6  
227,812.50 #  
5.2298 Ac.

PIERCE LANE

Total  
11.98 Ac

19-69

19-69