

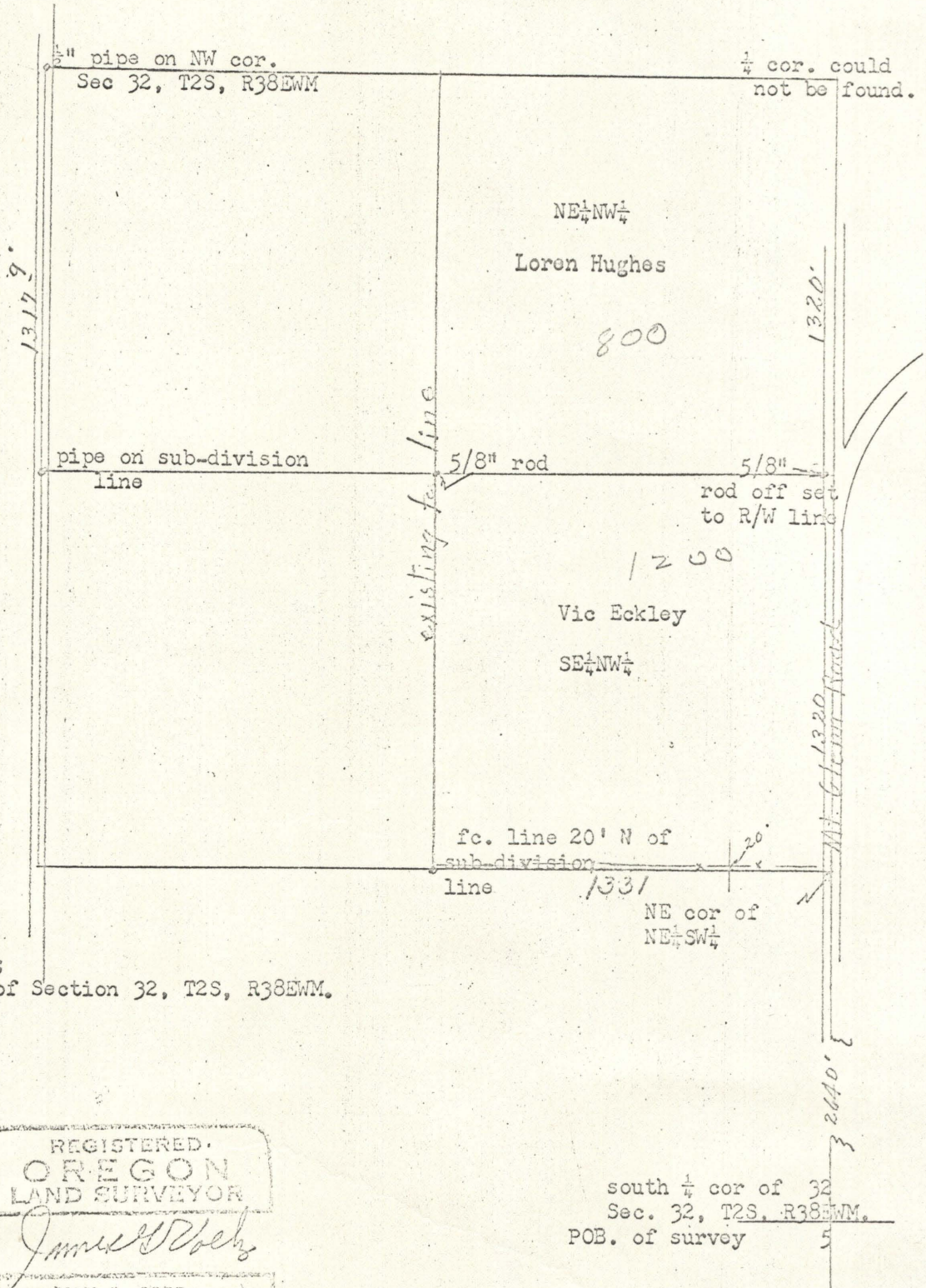
HC 3-67

19-E

Loren W. Hughes  
Fruitdale  
La Grande, Oregon

203832

May 19, 20, 1967



1970.5  
1369.9  
3340.4

1954.7  
285.1  
2660.0

1331  
1331  
2662

Description;  
NE 1/4 NW 1/4 of Section 32, T2S, R38EWM.

REGISTERED.  
OREGON  
LAND SURVEYOR

*James G. Voelz*

MAY 4, 1958  
JAMES G. VOELZ  
381

south 1/4 cor of 32  
Sec. 32, T2S, R38EWM.  
POB. of survey 5

180  
405  
65  
55