

59-87

59-87

North

52307.89

NE corner monumented.
63°02'40" Section 31, T2S, R38EWM.

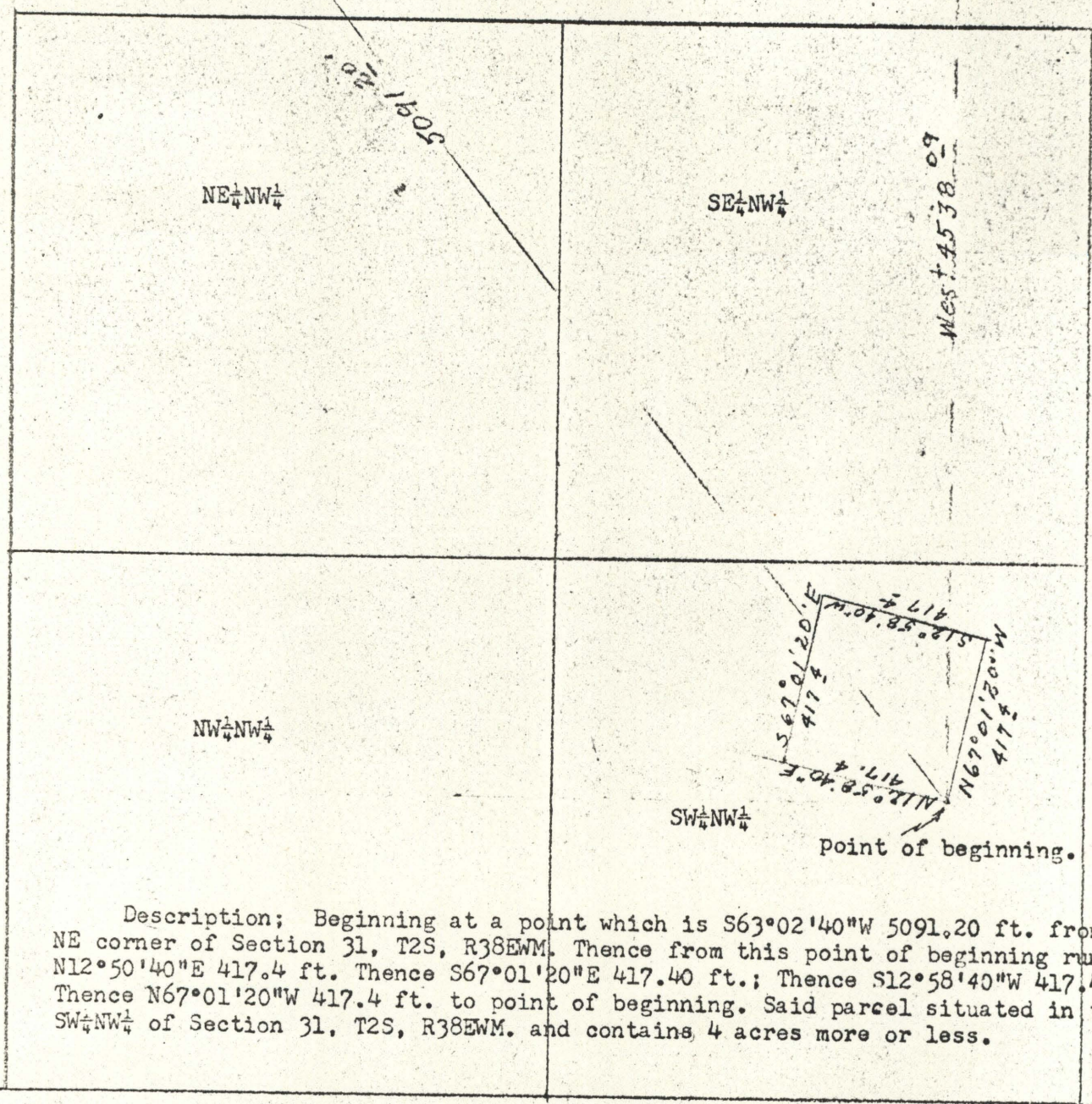
Larry Sweet

La Grande, Oregon

Date. Dec. 23, 1965

Scale; 1"=400'

2640'



Description; Beginning at a point which is S63°02'40"W 5091.20 ft. from NE corner of Section 31, T2S, R38EWM. Thence from this point of beginning run N12°58'40"E 417.4 ft. Thence S67°01'20"E 417.40 ft.; Thence S12°58'40"W 417.4 ft.; Thence N67°01'20"W 417.4 ft. to point of beginning. Said parcel situated in the SW 1/4 NW 1/4 of Section 31, T2S, R38EWM. and contains 4 acres more or less.

REGISTERED
 OREGON
 LAND SURVEYOR
James C. Voell
 MAY 4, 1964
 JAMES C. VOELL
 381