

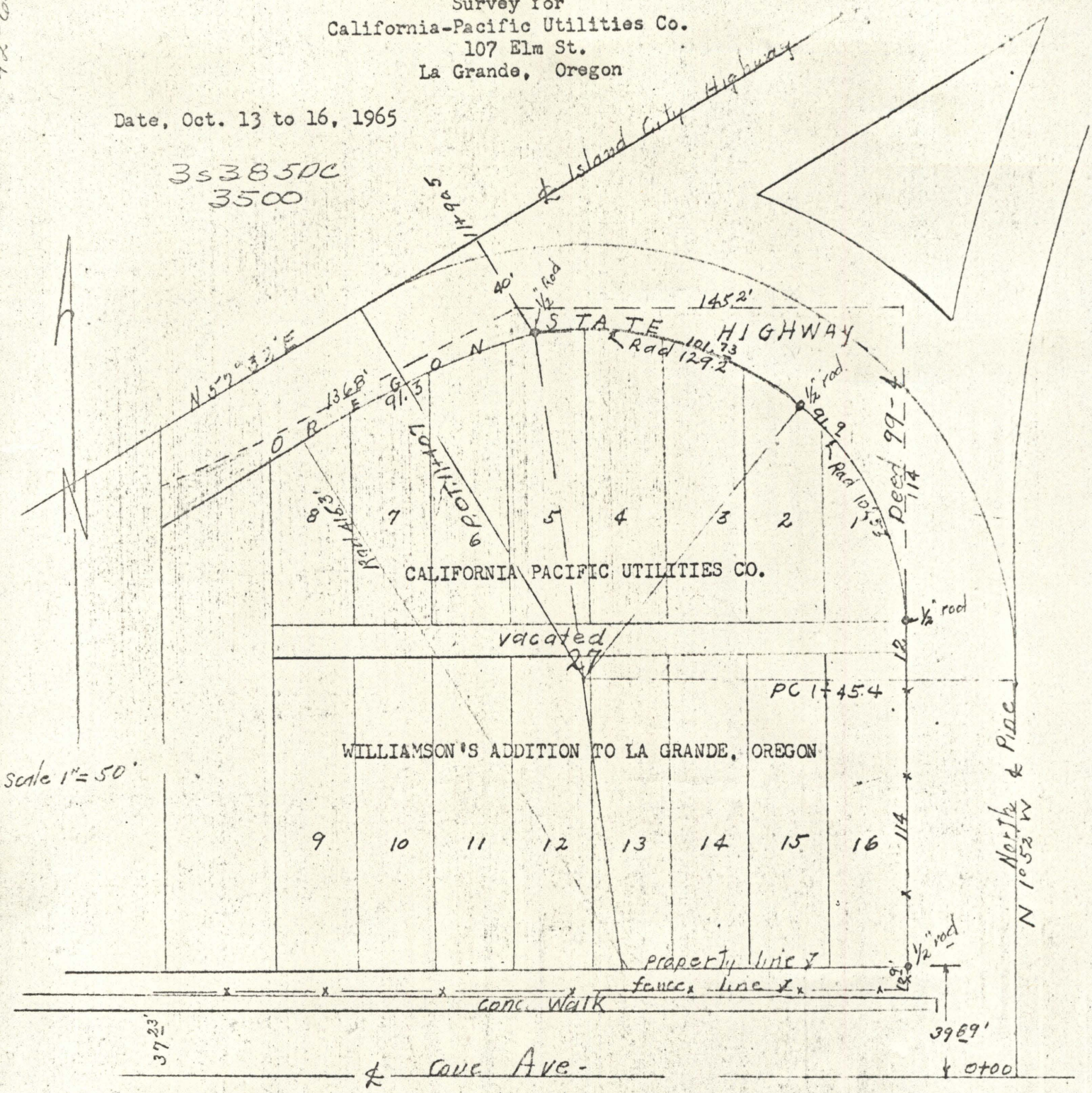
42-65

59-24

Survey for  
California-Pacific Utilities Co.  
107 Elm St.  
La Grande, Oregon

Date, Oct. 13 to 16, 1965

3538500  
3500



REGISTERED  
OREGON  
LAND SURVEYOR

*James G. Voelz*

MAY 4, 1965  
JAMES G. VOELZ  
201