

2-65

59-2

Date Survey 12-1-64

section line

Scale

Look in road marking corner

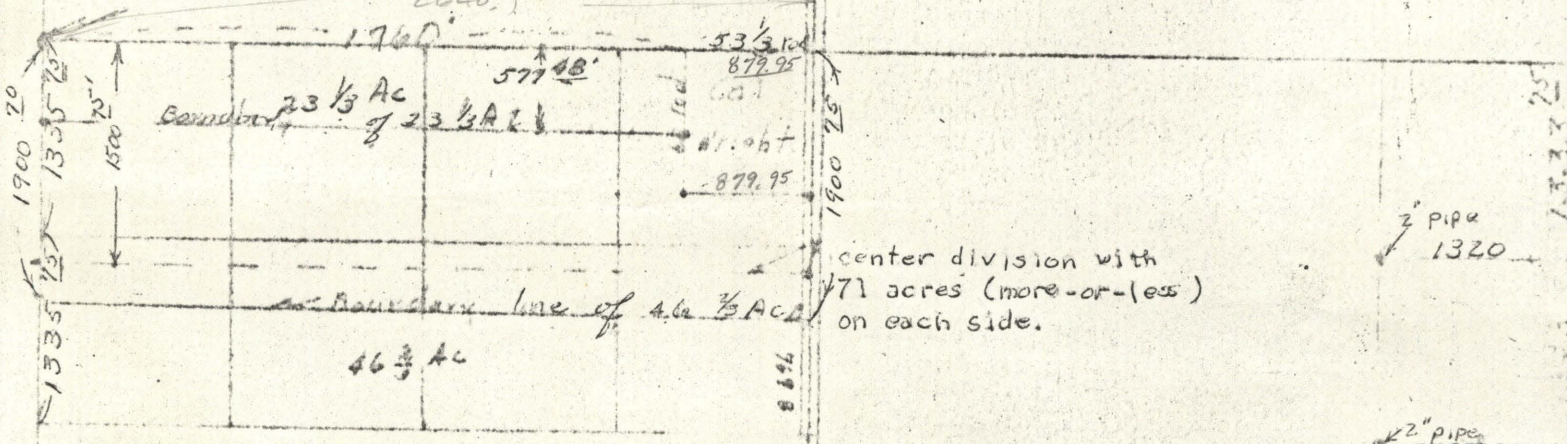
25 38 5100



Description of north tract of 23-1/3 Ac. Acres  
 Beginning at the west 1/4 corner of section 15, T2S, R39E, W4E; thence north along the north line of South West quarter of said section 1760 feet more or less to North West corner of land conveyed to Cal Wright.; Thence south on west line of said property of Cal Wright 577.48 feet.; Thence west parallel to north boundary to west section line of said section 15.; Thence north on said section line to point of beginning. said description being in NW 1/4 of said section 15 and to contain 23-1/3 Ac. more or less.

Description of south tract of 46-2/3 Acres  
 Beginning at point on west section line of section 15, T2S, R39E, W4E, 1900 feet south of west 1/4 corner of said section; thence north parallel to south boundary of said section 15 to east boundary of NW 1/4 of said section.; thence south to south 1/4 corner of said section 15.; thence west on section line to W corner of section 15.; thence north on section line to point of beginning. said description to contain 46-2/3 acres more or less and being the south 46-2/3 acres of NW 1/4 of said section.

1" pipe on west 1/4 corner of section 15 (2640)



2" pipe 1320

2" pipe

Total description of Ott estate.: The NW 1/4 of Section 15 in T2S, R39E, W4E, beginning the parcel of land described as commencing at the northwest corner of the SW 1/4 quarter of said section 15 and running thence north along the north line of said SW 1/4 quarter of section 15 a distance of 53-1/2 rods; thence south on a line parallel to the north-south center line of said section 15 a distance of 50 rods; thence east along the north line of said SW 1/4 quarter of section 15 a distance of 5-1/3 rods; thence north 50 rods to the point of beginning.

*James H. Ott*  
 Surveyor  
 State of Kansas