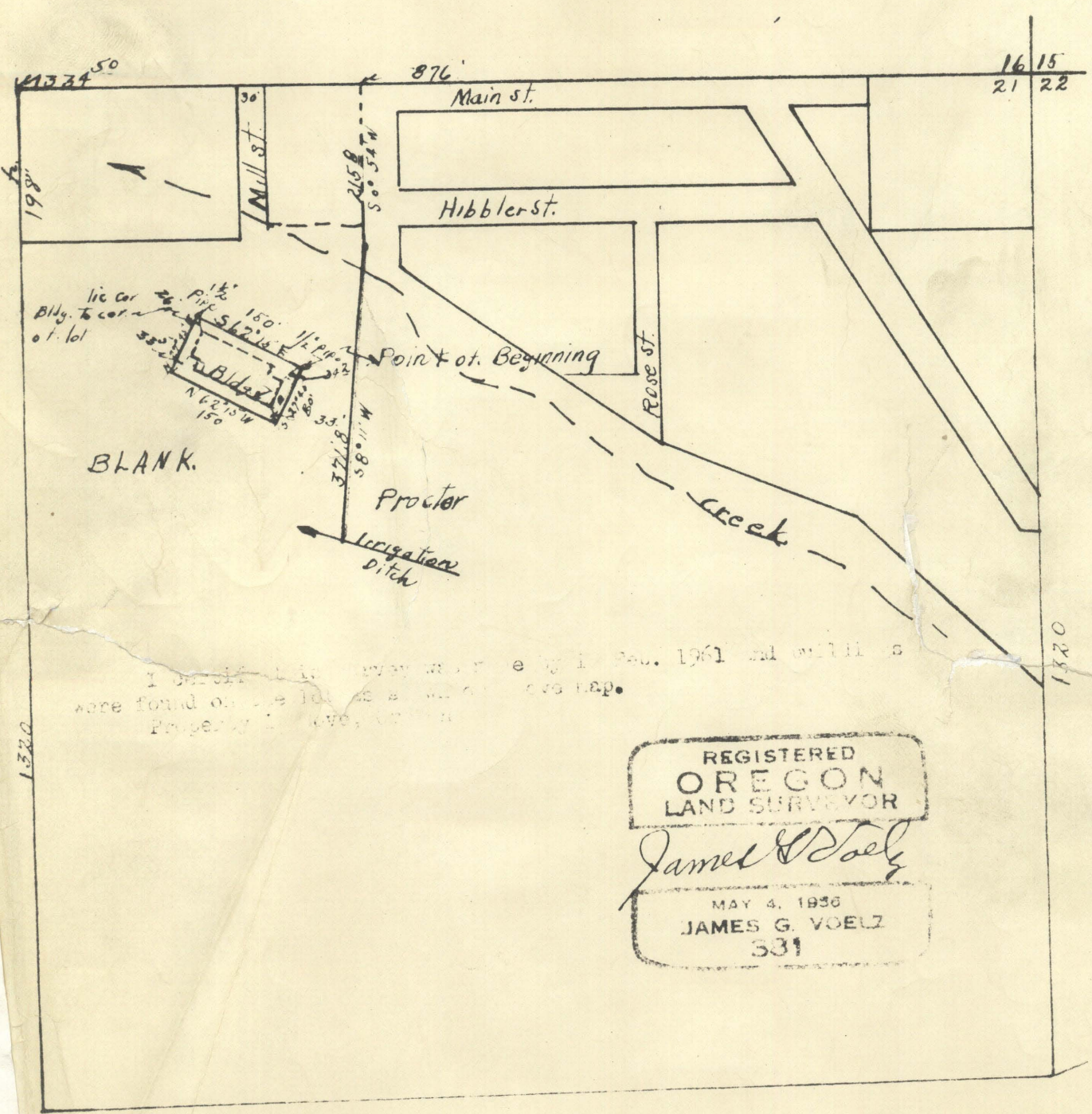


Survey of Grant Golder Property
 Deed dated August 2, 1943; Book 106 page 194.

Description;

Beginning at a point which is N89°40'W 962.3 feet and then S 0° 20' West 364.8 feet from NE corner of section 21, T-3- , R-40-ETL; thence S27°45'W a distance of 80 feet; thence S 62°15'W a distance of 150 feet; thence N 27°45'E a distance of 80 feet; thence S 62°15'E a distance of 150 feet to point of beginning.

scale 1"=200'



I certify that every monument and well known monuments were found on the lot as shown on the above map.
 Property of Golder, Oregon

REGISTERED
 OREGON
 LAND SURVEYOR
James G. Voelz
 MAY 4, 1956
 JAMES G. VOELZ
 331

32-64

32-1964