

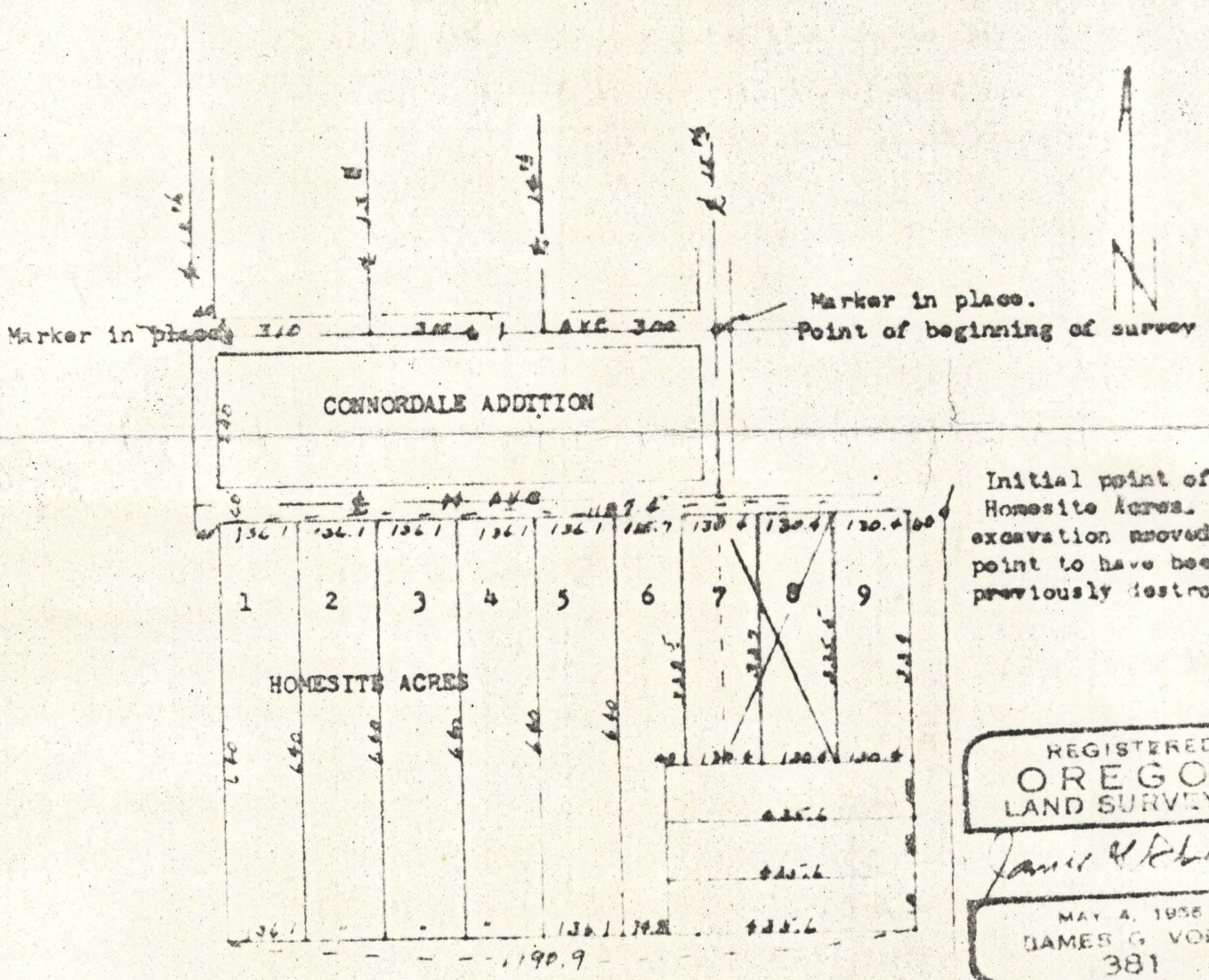
69-7

Survey for
Jack D. & Dixie B. Ferguson

Description: E 1/2 Lot 7 and all Lot 8 of Homesite Acres
to La Grand, Oregon

Date: Feb. 29, 1964

Note: The distances on north boundary and south boundary of HOMESITE ACRES are different and appear to be in error. The original, or initial point of beginning of Homesite Acres has been previously destroyed making it impossible to reconstruct survey from that point. The distance shown on this plat are those of original plat. See sheet two for detail of described property



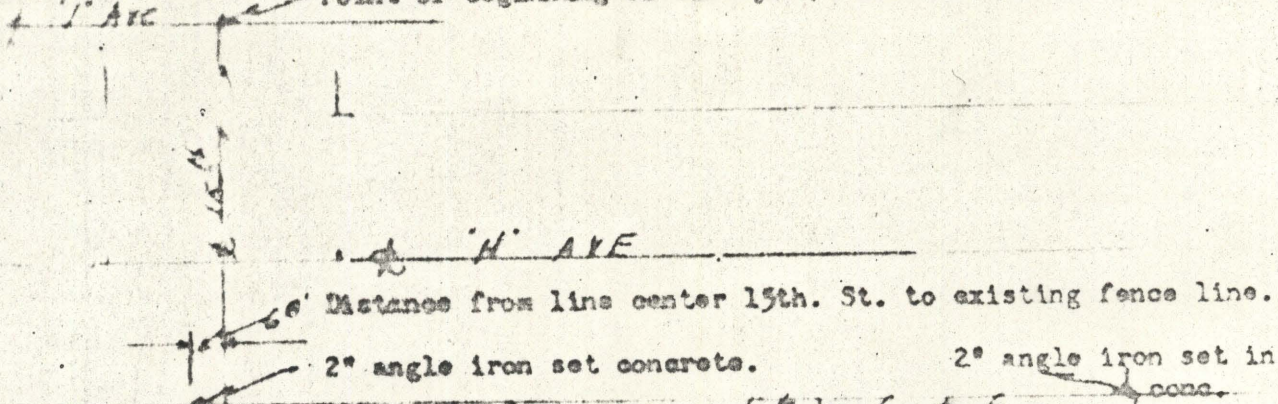
Initial point of
Homesite Acres.
excavation showed this
point to have been
previously destroyed.

REGISTERED
OREGON
LAND SURVEYOR
James G. Voelz
MAY 4, 1955
JAMES G. VOELZ
381

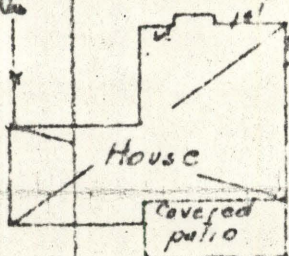
Detail sheet for Jack D. & Dixie B. Ferguson

scale 1" = 40'

Point of beginning of survey. (marker in place)



distance to E₁ lot line from line center of 15th. st. using platted distance as recorded on north boundary of HOMESITE AC.

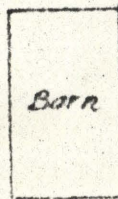


East 1/2 lot 7

Lot 8

Garage would encroach using ~~trace~~ platted distance

This shed extends to existing fence line.



Barn

336' (actual distance)

dashed line indicates location of property line by using distance to fence

Note: It is impossible to establish corners based/platted distance of HOMESITE AC. until an error on plat is cleared up. These fences have been in place according to residents for many years; existing fences are tied to established survey markers as shown on plat.

The existing corners are 2" angle iron set in concrete.

I certify this survey was completed by me on Feb. 29, 1964 with the results as shown.

REGISTERED
OREGON
LAND SURVEYOR

James H. [Signature]

NOV 1964

sheet 2

not line I

(platted distance)