

2-63

Date- August 19, 1923

17 16

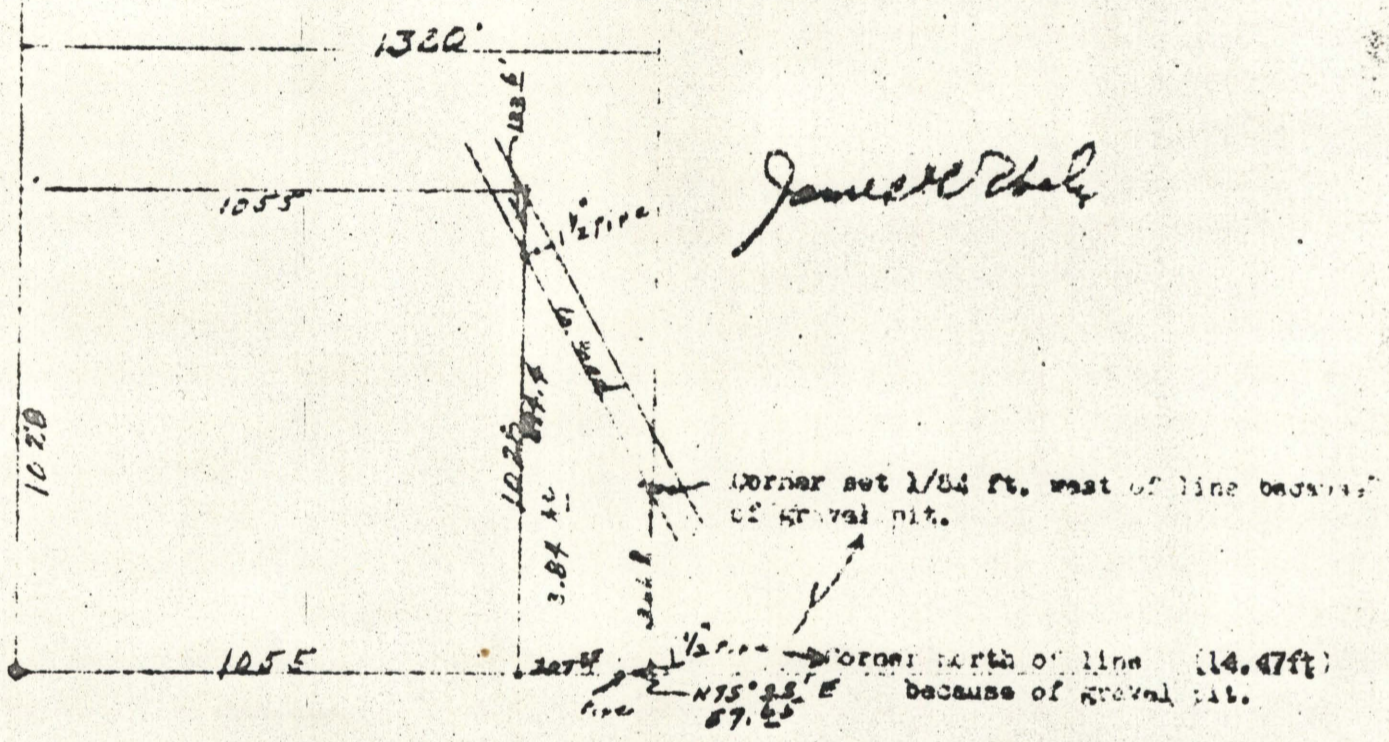
County Road

established corner  
T-3-S, R-34-37E

description:

Beginning at a point on sub-division line 1055 ft. east of west 1/4 corner of Section 16, T-3-S, R-34-37E. Th north 894.4 ft. to south west side of county road. Th. southerly on east side of county road 578.8 ft. north-or-less to east boundary of SW1/4 of NW1/4 of said section. Th. south 380.57 ft. to SE corner of SW1/4 of NW1/4 of said section. Th. west 265 ft. to point of beginning.

Scale 1" = 400'



2-63