

1-63

V89-1

Division of REVENUE

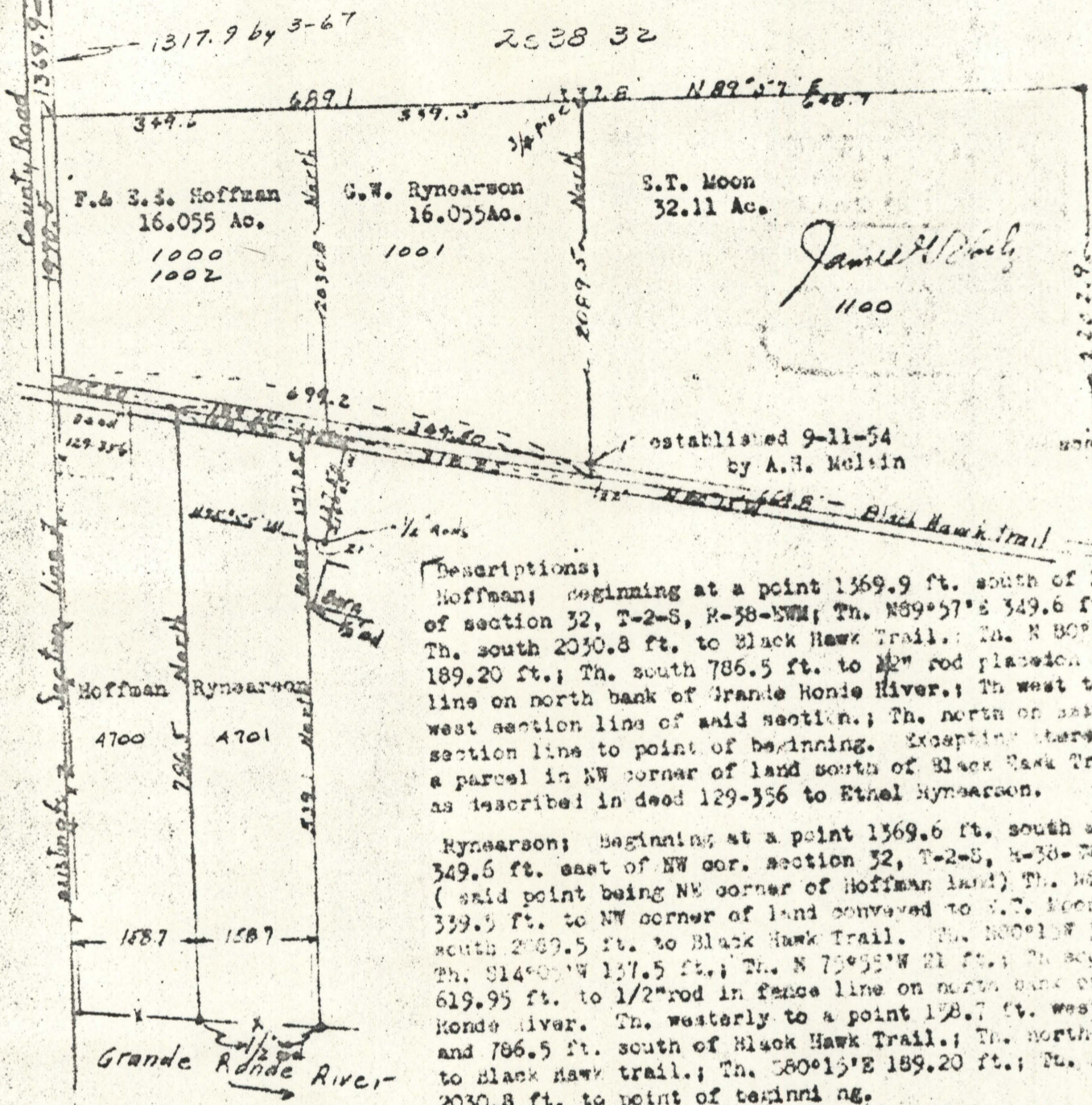
for

George William Rynearson and Frances A. Earl E. Hoffman

29 Sec. Cor.

32 T-2-S, R-38-W21

June 24, 1963



Descriptions:

Hoffman: Beginning at a point 1369.9 ft. south of NW cor. of section 32, T-2-S, R-38-W21; Th. N89°57'E 349.6 ft.; Th. south 2030.8 ft. to Black Hawk Trail; Th. N 80°15'W 189.20 ft.; Th. south 786.5 ft. to 1/2" rod placement fence line on north bank of Grande Ronde River; Th. west to west section line of said section; Th. north on said section line to point of beginning. Excepting therefrom a parcel in NW corner of land south of Black Hawk Trail as described in deed 129-356 to Ethel Rynearson.

Rynearson: Beginning at a point 1369.6 ft. south and 349.6 ft. east of NW cor. section 32, T-2-S, R-38-W21. (said point being NE corner of Hoffman land) Th. N89°57'E 349.6 ft. to NW corner of land conveyed to E.T. Moon. Th. south 2030.5 ft. to Black Hawk Trail. Th. N80°15'W 189.20 ft. Th. S14°05'W 137.5 ft.; Th. N 75°55'W 21 ft.; Th. south 619.95 ft. to 1/2" rod in fence line on north bank of Grande Ronde river. Th. westerly to a point 158.7 ft. west and 786.5 ft. south of Black Hawk Trail; Th. north 786.5 ft. to Black Hawk trail; Th. S80°15'E 189.20 ft.; Th. north 2030.8 ft. to point of beginning.

Parcel of land from E.T. Moon to G.W. Rynearson: Beginning at a point 321.14 ft. east and 3395.8 ft. south of NW corner of section 32, T-2-S, R-38-W21. (said point being further described as being N80°15'W 373.35 ft. from SW corner of land conveyed to E.T. Moon which is north of Black Hawk Trail) Th. S80°15'E 54.50 ft.; Th. S14°05'W 137.5 ft.; Th. N75°55'W 21 ft.; Th. north 137.35 ft. to point of beginning.