

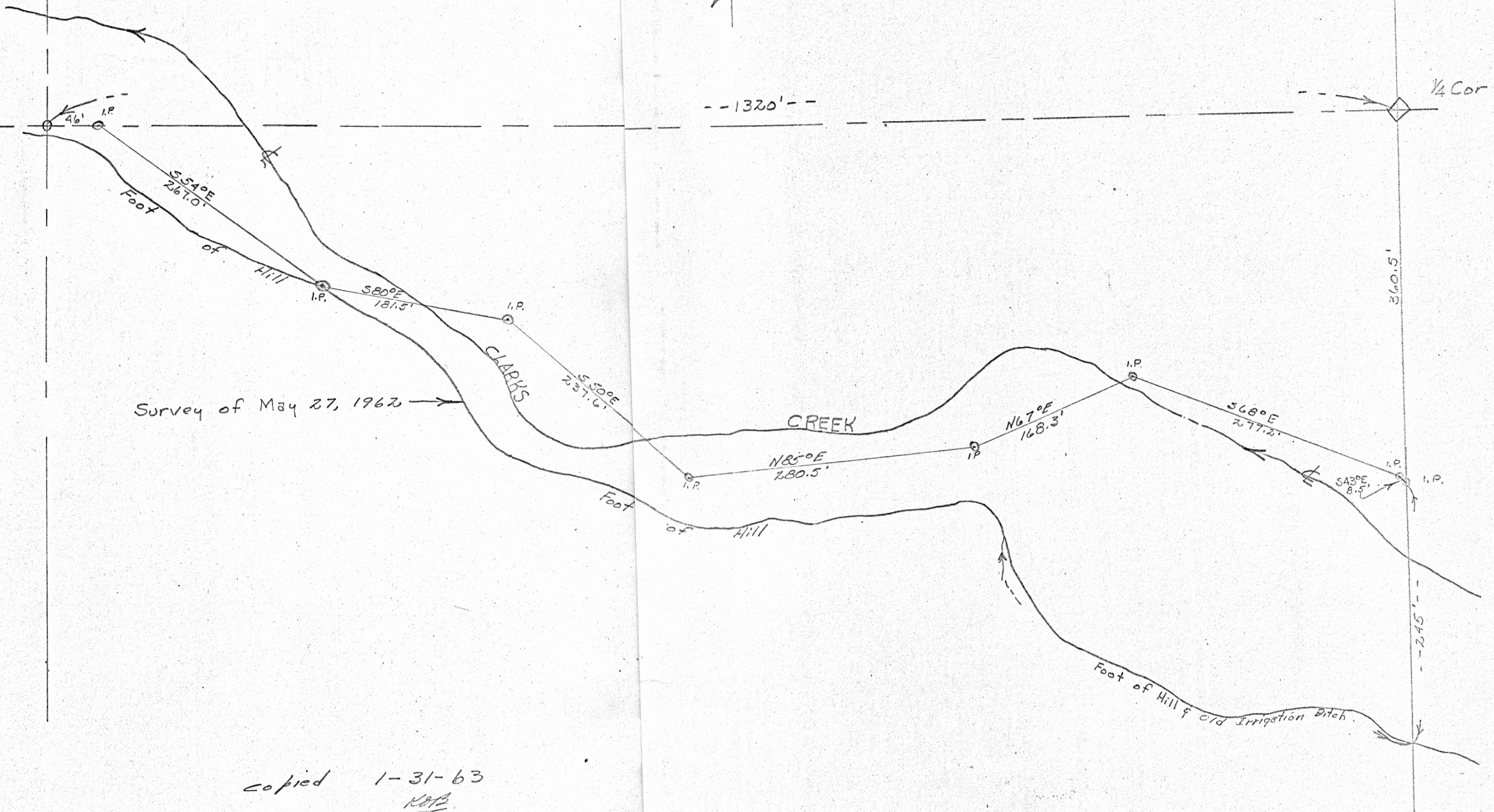
copied by H.O. Bomberger  
 from Survey by  
 David C. Slight  
 Reg Eng 1558

Survey of  
 The NE 1/4 of the SE 1/4 Sec. 23  
 TWP 1 North - Range 39 E. W.M.  
 Union - County - Oregon  
 As Per  
 Court Order Dated Jan 19, 1961  
 Scale: 1"=100' Feb 1962  
 Old County Road No. 562



NE Cor  
 Sec 23

23



Survey of May 27, 1962

copied 1-31-63  
 KOB

1-63

1-63

1-63 (CONT)