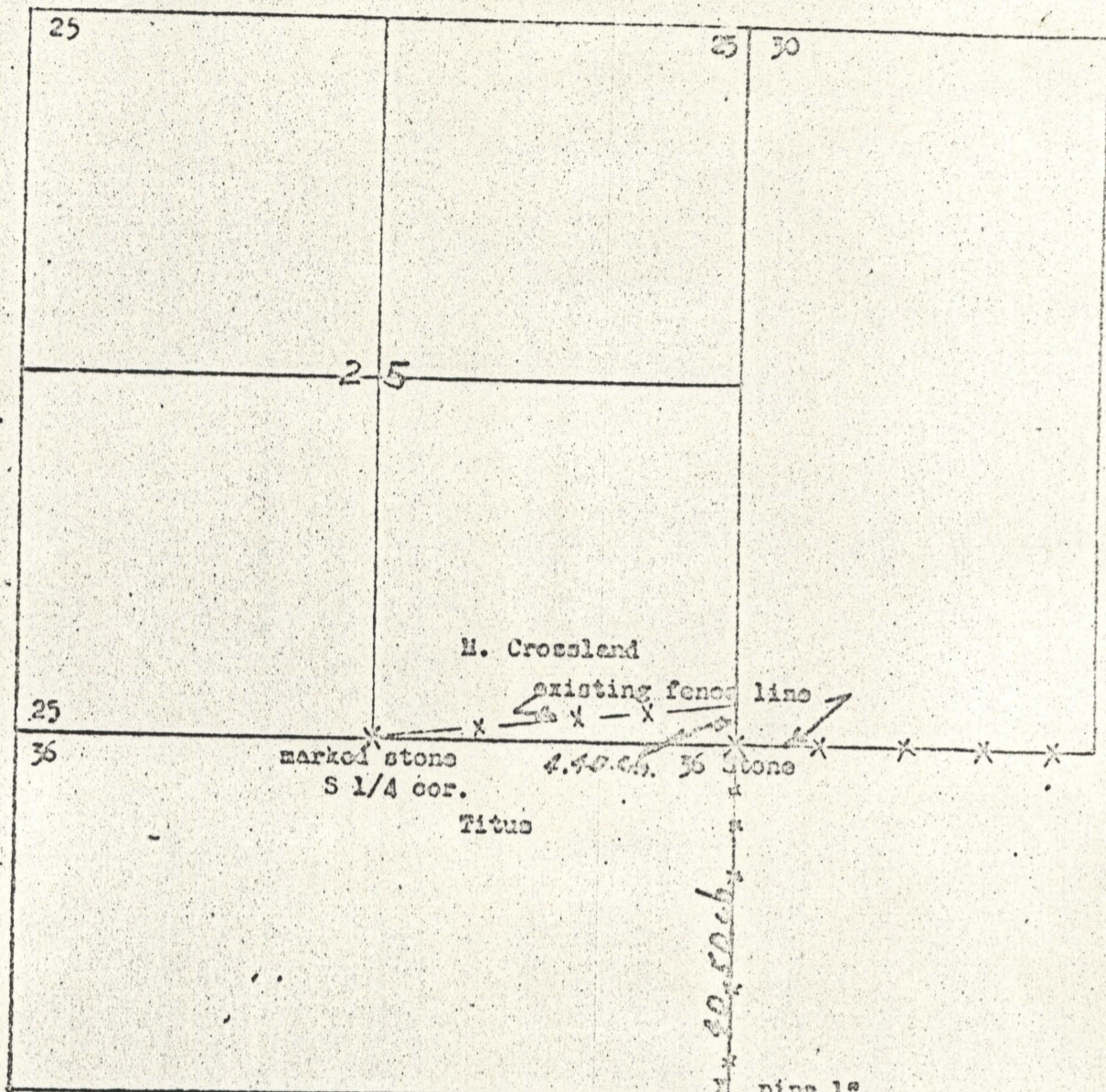


8-61

Survey for Mark Crossland
Union, Oregon

Survey completed November 4, 1961



Survey to establish line from S 1/4 Corner to
SE. Corner of section 25, T-5-S, R-40-EW.

REGISTERED
OREGON
 LAND SURVEYOR

James G. Voelz

MAY 4, 1966
 JAMES G. VOELZ
 331

1961-8-4