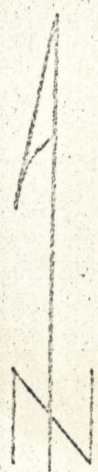
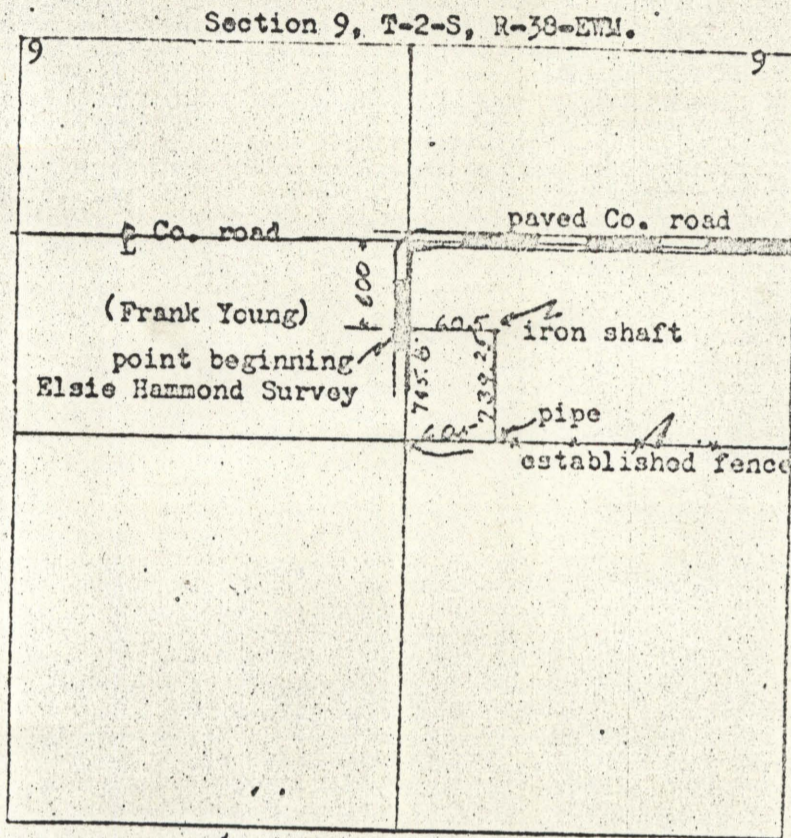


19-1

19-1

Survey for Elsie Hammond  
November 4 1961



Scale 4" = 1 mile

Description;

Beginning at a point 600 ft. south of line of center of east west countyroad; said point also being on 1/4 section line on west side of SW 1/4 NE 1/4 Section 9, T-2-S, R-38-EWM. thence east 605 feet, thence south 739.25 feet to south line of SW 1/4 NE 1/4 of said section, thence westerly to SW Corner of SW 1/4 NE 1/4 of said section, thence north 745.8 feet more-or-less to point of beginning. Above described land to be situated in SW 1/4 NE 1/4 of Section 9, T-2-S, R-38-EWM.

*James W. [unclear]*

1961 #1

61