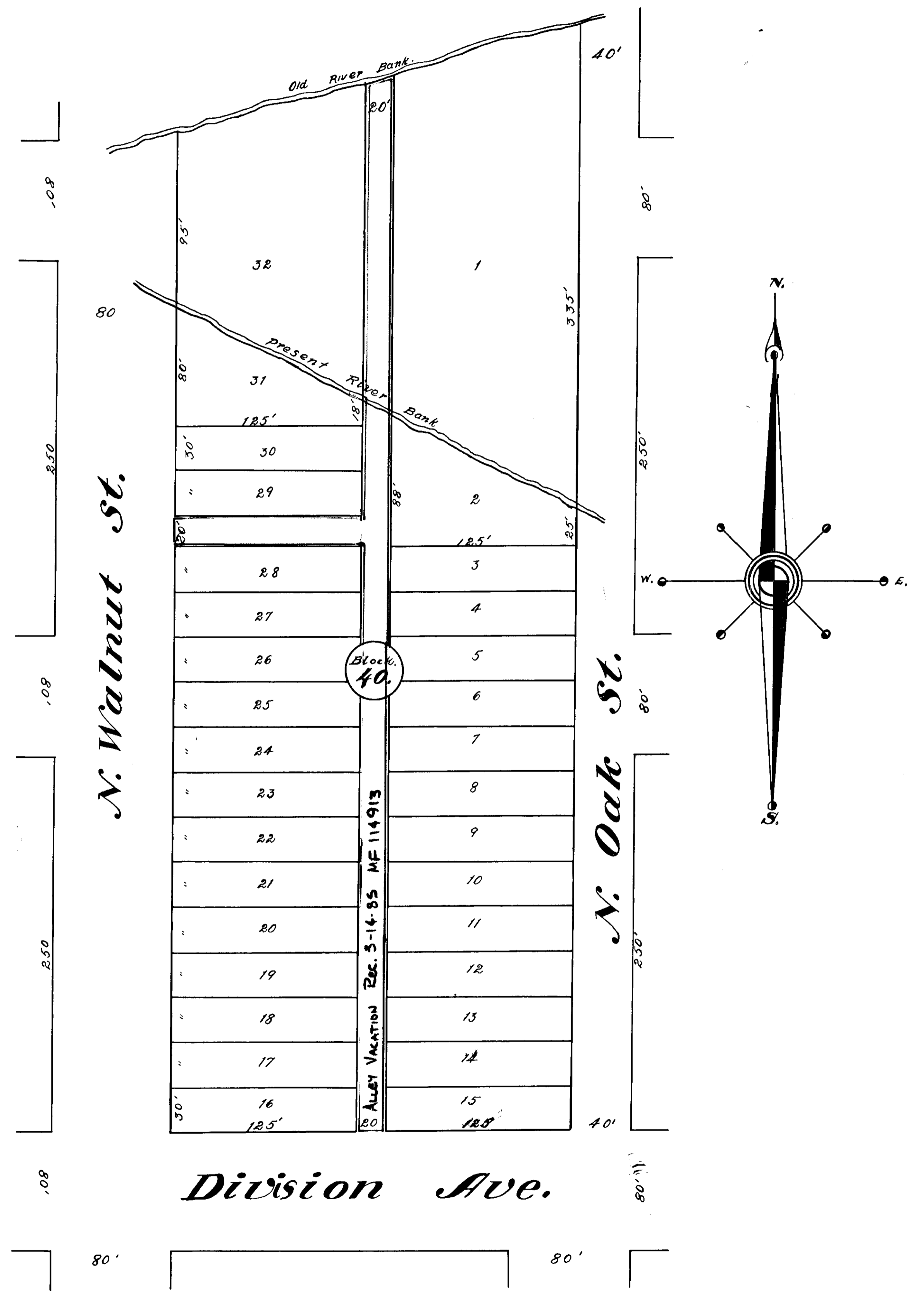


WADE'S SUBDIVISION OF BLOCK 40. RIVERSIDE ADDITION.

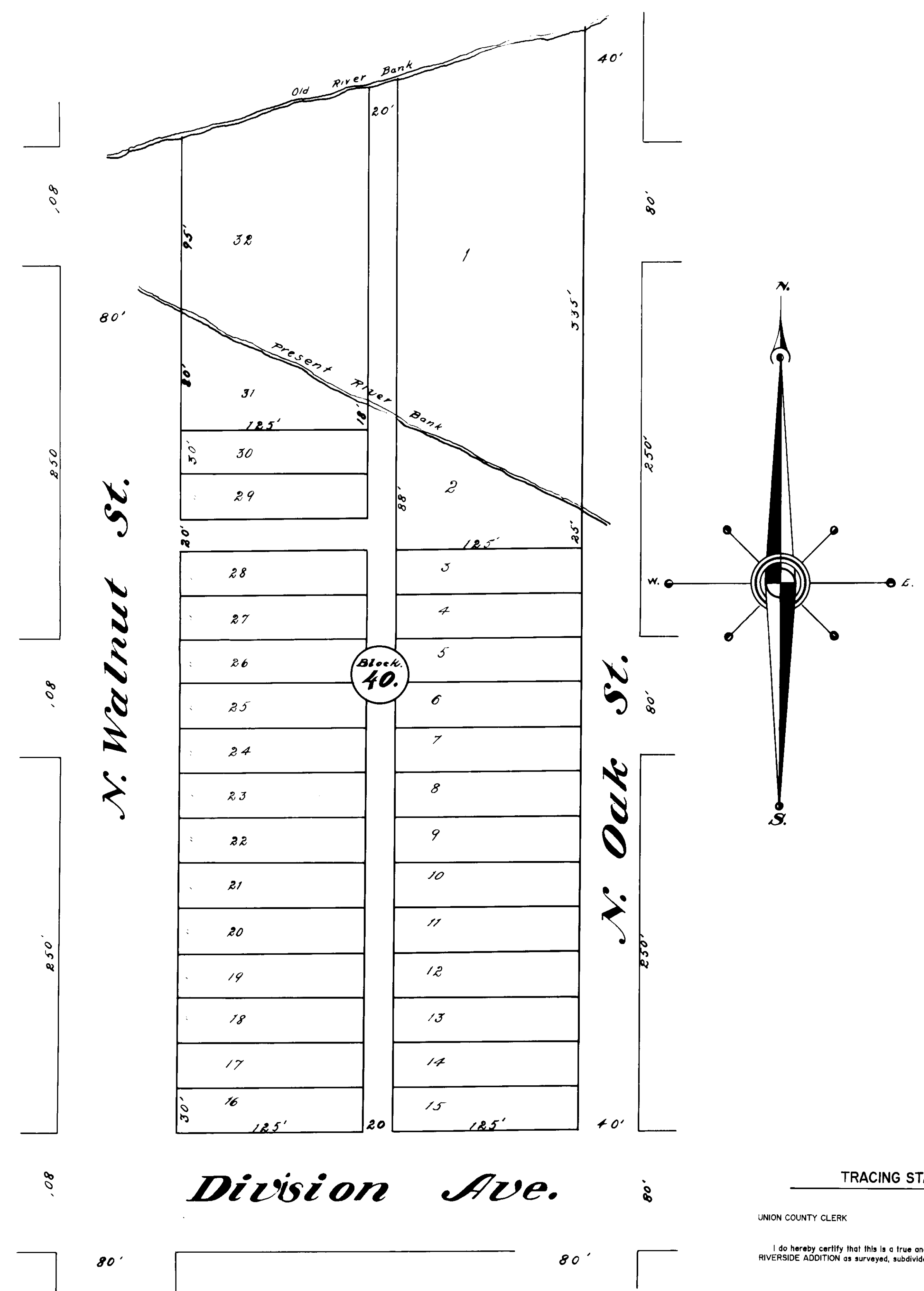


State of Oregon
County of Union.
I T.A. Rinchart do hereby certify
that I have examined the County
Records and find that this tract
is free from Taxes and conforms to
the Law.
T.A. Rinchart
County Assessor.

State of Oregon
County of Union.
I Arthur Curtis do hereby
certify that I have surveyed this
tract and that this plat shows
the actual distances as measured
by me upon the ground and con-
forms the subdivision of the sec-
tions.
Arthur Curtis
County Surveyor.

Approved on this 1st day of Sept. 1910.
J. B. Henry
County Judge.
J. M. Selder
L. C. Gallonay
County Commissioners
Filed Sept 7th 1910 - S. B. Swaney, Recorder

WADE'S SUBDIVISION OF BLOCK 40. RIVERSIDE ADDITION.



State of Oregon
County of Union.
I T.A. Rinehart do hereby certify
that I have examined the County
Records and find that this tract
is free from Taxes and conforms to
the Law.
T.A. Rinehart
County Assessor.

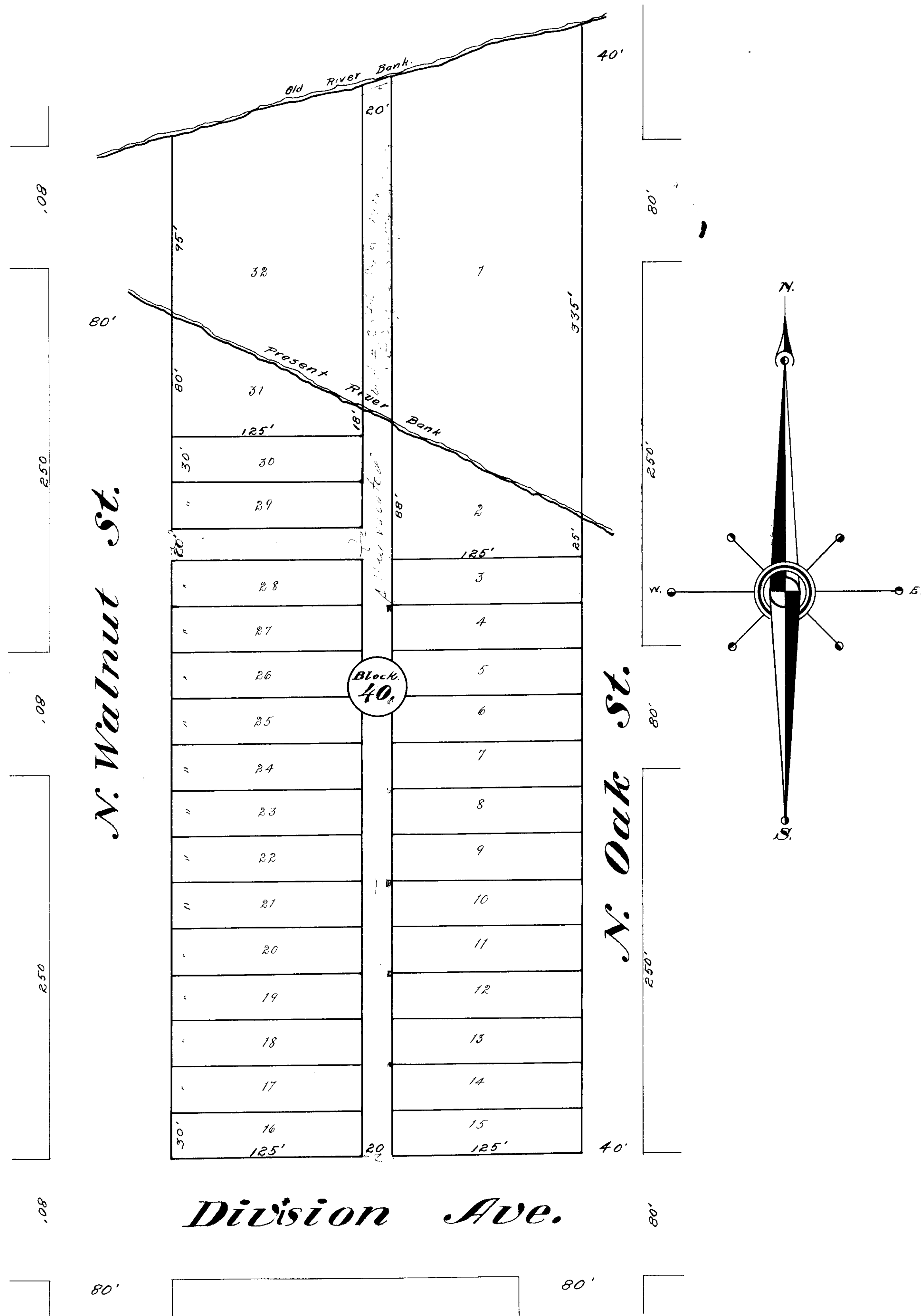
State of Oregon
County of Union.
I Arthur Curtis do hereby
certify that I have surveyed this
tract and that this plat shows
the actual distances as measured
by me upon the ground and con-
forms the subdivision of the sec-
tions.
Arthur Curtis
County Surveyor.
Approved on this 1st day of Sept. 1910.
J.B. Henry
County Judge.

TRACING STATEMENTS

UNION COUNTY CLERK
I do hereby certify that this is a true and exact copy of WADE'S SUBDIVISION OF BLOCK 40
RIVERSIDE ADDITION as surveyed, subdivided and plotted.
T.A. Rinehart
UNION COUNTY CLERK 1-7-91

UNION COUNTY SURVEYOR
I do hereby certify that this is a true and exact copy of WADE'S SUBDIVISION OF BLOCK 40
RIVERSIDE ADDITION as surveyed, subdivided and plotted.
Arthur T. Black
UNION COUNTY SURVEYOR
OPLS 991 12/13/90

WADE'S SUBDIVISION OF BLOCK 40. RIVERSIDE ADDITION.



State of Oregon
County of Union.

I T. A. Rinehart do hereby certify that I have examined the County Records and find that this tract is free from Taxes and conforms to the law.

T. A. Rinehart
County Assessor

State of Oregon
County of Union.

I Arthur Curtis do hereby certify that I have surveyed this tract and that this plat shows the actual distances as measured by me upon the ground and conforms the subdivision of the sections.

Arthur Curtis
County Surveyor

Approved on this 13th day of Sept. 1910.

J. O. Keury
County Judge.

J. M. Selder
J. A. Hallway
County Commissioners

Filed Sept. 7th 1910