

19670001

sk 2 - pg 58

# MOUNTAIN VIEW ADDITION ISLAND CITY, OREGON

Date August 19, 1966

I, James G. Voelz, do certify that I am a registered land surveyor in the State of Oregon and have surveyed the land shown on the plat and all corners are placed in accordance with ORS 92.060. The initial point of survey is designated by a two inch galvanized pipe 36" long and driven 6" below surface of ground. The point of beginning being N0° 4' E 1324.5'; thence N89° 52' 40" W 35' from the South 1/4 corner of Section 3, T3S R38EWM.; From point of beginning so determined running thence N 89° 52' 40" W 633'; on the south line of the NE 1/4 SW 1/4 of said section; thence N0° 4' E 992.54'; thence S89° 52' 40" E 95'; thence S31° 2' E 240'; thence S22° 6' 40" E 212.74'; thence S35° 43' E 150'; thence S53° 15' 40" E 115'; thence S54° 50' 40" E 87.38'; thence S 89° 52' 40" E 119.50'; thence S0° 4' W 349.74' more or less to the southeast corner of NE 1/4 SW 1/4 of said section; thence N 89° 52' 40" W 35' to the point of beginning. Subject to road easement on east side. Situate in NE 1/4 SW 1/4 of Section 3 T3S R38EWM.

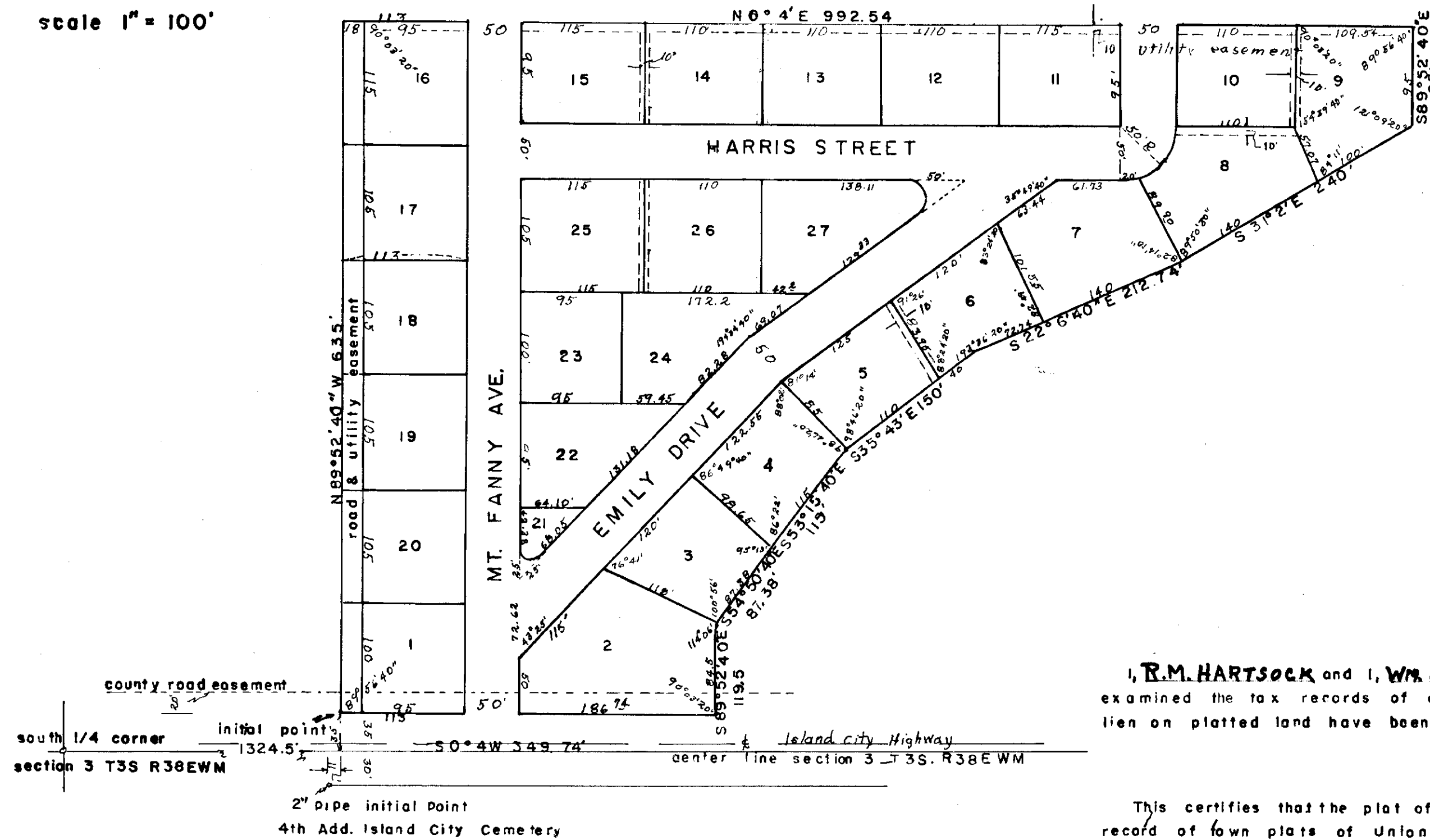
*James G. Voelz*  
James G. Voelz Professional Land Surveyor  
Oregon Reg. No. 381

Subscribed and sworn to before me this 27<sup>th</sup> day of September 1966  
My commission expires Oct. 22, 1970

*Stewart F. Wyles*  
Notary public for Oregon



scale 1" = 100'



The accompanying plat is hereby adopted by the undersigned:

Planning Commission of Union County Oregon

\_\_\_\_\_  
Administrator Approved \_\_\_\_ day \_\_\_\_

\_\_\_\_\_  
Secretary Approved \_\_\_\_ day \_\_\_\_

\_\_\_\_\_  
Chairman planning Commission Approved \_\_\_\_ day \_\_\_\_

County Surveyor Union County (acting)

*James W. Hanley* Approved 6 day March, 1967

City of Island City, Union County, Oregon

*Leslie G. Masterton* Approved 13<sup>th</sup> day MARCH 1967  
Mayor  
*Leslie G. Masterton* Approved 13<sup>th</sup> day MARCH 1967  
Secretary  
*G.D. Banady* Approved 13<sup>th</sup> day MARCH 1967  
Chairman planning Commission

I, **R.M. HARTSOCK** and I, **W.M. F. MOORE** respectively assessor and sheriff of Union County, Oregon hereby certify that we have examined the tax records of area in accompanying plat and all State and County taxes and assessments that could constitute a lien on platted land have been paid and plat approved.

*R.M. Hartsock* Approved 27 day Feb 1967  
Assessor

*W.M. Moore* Approved 27 day Feb 1967  
Sheriff

This certifies that the plat of Mountain View Addition, Island City, Oregon is approved for filing and placed in the record of town plats of Union County, Oregon, by the undersigned by order dated the 17<sup>th</sup> day MARCH 1967 and recorded in County Court Journal - T page \_\_\_\_.

*Barth Schuman* Approved 16<sup>th</sup> day March, 1967  
County Judge

*Bernard O'Key* Approved 16 day March, 1967  
Commissioner

*R.W. Shaak* Approved 16 day March, 1967  
Commissioner

I, **Deloris C. Hicks** County Clerk of Union County do certify that the above named are now the duly qualified elected, sworn and acting judge and commissioners of Union County the above signatures are genuine and the seal here to affixed is seal of my office.

*Deloris C. Hicks*  
County Clerk

We, the undersigned, as owners of property of area platted on accompanying plat do hereby execute and declare the following dedication for purpose of establishing Mountain View Addition All streets are donated to and for public use:

*Eldon L. Yates*  
*Ray F. White*

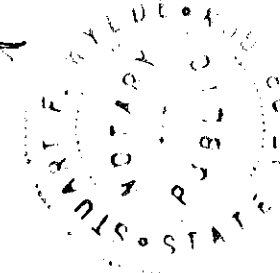
*Delores J. Yates*  
*Dorthea E. White*  
*Clara W. White*  
*May Jane Ellsworth*

State of Oregon;  
County of Union;

On the 27<sup>th</sup> day February 1967 the above signed personally appeared before me and acknowledged the foregoing dedication to be their voluntary act and deed.

*Stewart F. Wyles*  
Notary public for Oregon

My commission expires 10-22-70



STATE OF OREGON, }  
County of Union. }  
I certify that the within instrument of writing was received for record on the 17<sup>th</sup> day of March 1967 at 3 o'clock P.M., and recorded on page 58 in Book 2 Record of Deeds of said County.  
**DELORIS C. HICKS**, County Clerk.  
*Deloris C. Hicks* Deputy.

