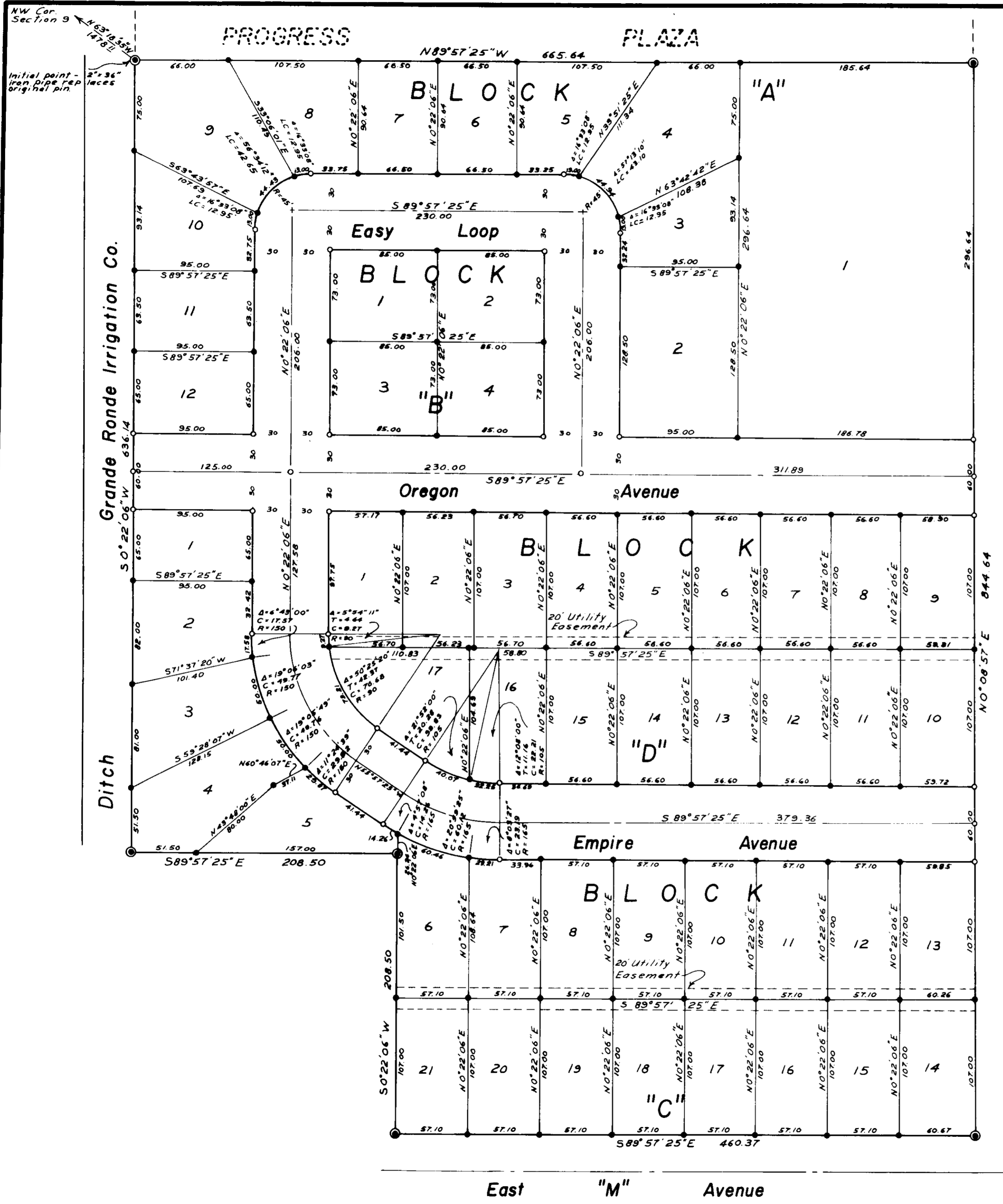


19720000



# Jordan East

SUBDIVISION  
 Situated in  
 E 1/2; NW 1/4, Sec. 9, T3S, R38E, W.M.  
 UNION COUNTY

### LEGEND

- Found Monument of Record
- Set 5/8" x 30" Iron Pin with Plastic Cap Marked BGF Survey Mk.
- Set 1/2" x 30" Iron Pin
- Utility Easement Line



**BASIS OF BEARING**  
 Forward Bearing as Published  
 by U.S.C. & G.S. from  $\Delta$   
 College to  $\Delta$  Valley.

**SCALE**  
 1" = 60'

REGISTERED  
 PROFESSIONAL  
 LAND SURVEYOR  
*Duane J. Griffith*  
 OREGON  
 JULY 10, 1964  
 DUANE J. GRIFFITH  
 644

### TRACING STATEMENTS

COUNTY CLERK

I do hereby certify that this is a true and exact copy of the original plat of Jordan East as filed with this office.

CLERK

by

SURVEYOR

I do hereby certify that this is a true and exact copy of the original plat of Jordan East as surveyed, subdivided and platted.

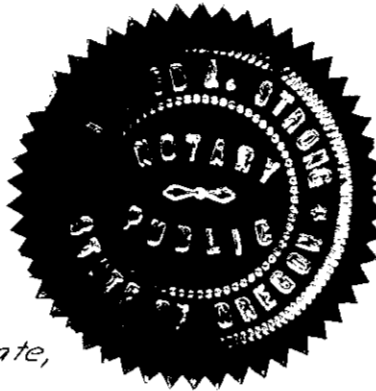
*Duane J. Griffith*  
 PLS 644

**DEDICATION**

STATE OF OREGON  
COUNTY OF UNION SS

Be it remembered that on this 25<sup>th</sup> day of August, 1972, personally appeared before me DONALD A. JORDAN and EVELYN C. JORDAN husband and wife, who are known to me to be the identical persons described in and who executed the below instrument and who acknowledged to me that they executed the same freely and voluntarily.  
IN WITNESS WHEREOF, I hereunto set my hand and affixed my official notary seal this 25<sup>th</sup> day of August, 1972.

Mildred A. Strong My Commission Expires \_\_\_\_\_  
Notary Public for Oregon



STATE OF OREGON  
COUNTY OF UNION SS

We DONALD A. JORDAN and EVELYN C. JORDAN husband and wife being duly sworn, dispose and say that we are the owners of JORDAN EAST SUBDIVISION more particularly described in the annexed Surveyor's Certificate; that we did cause the same to be surveyed and platted as shown on the annexed map and we do for ourselves, our heirs and assigns, hereby dedicate, donate and convey to the public use forever, all streets and avenues as shown; said plat being subject to utility easements as shown on annexed plat; also subject to City of LaGrande building set back requirements and protective covenants filed separately.

Donald A. Jordan Evelyn C. Jordan

**SURVEYOR'S CERTIFICATE**

I, DUANE I. GRIFFITH, Surveyor, being duly sworn, dispose and say that I have surveyed, subdivided and platted JORDAN EAST SUBDIVISION situated in the E 1/2 of the NW 1/4 of Section 9 T3S R38E WM, more particularly described as follows: Beginning at a 2" x 36" galvanized iron pipe, with brass cap marked "Initial Point x Jordan East Subdivision", said pipe being 663.91 ft. South and 1320.62 ft. East of the NW Corner of said Section 9

- Thence S 0° 22' 06" W, 636.14 ft.
- " S 89° 57' 25" E, 208.50 ft.
- " S 0° 22' 06" W, 208.50 ft.
- " S 89° 57' 25" E, 460.37 ft.
- " N 0° 08' 57" E, 844.64 ft.
- " N 89° 57' 25" W, 665.64 ft. to the point of beginning, said parcel containing

11.94 acres; and that I made such survey and plat by order of and under direction of the owners thereof; that the size of all lots and the widths of all streets are as shown on the annexed plat; and that all lot corners and boundary corners are marked with iron pins as indicated on the annexed plat in accordance with ORS 92:050.

BAGETT-GRIFFITH-FERGUSON

Duane I. Griffith  
Duane I. Griffith - Partner



SUBSCRIBED and SWORN to before me this 25<sup>th</sup> day of August, 1972.

Mildred A. Strong My Commission Expires \_\_\_\_\_  
Notary Public for Oregon



**APPROVALS**

CITY OF LAGRANDE, ENGINEER

Examined and recommended For approval by the LaGrande City Commission this 24<sup>th</sup> day of July, 1972.

Wm A. Hamilton

UNION COUNTY, SURVEYOR

Examined and recommended for approval by the Union County Commission this 14 day of Sept, 1972.

Paul D. Beck

CITY OF LAGRANDE, PLANNING COMMISSION

Approved this 7<sup>th</sup> day of August, 1972.

Roy I. Skeen - vice chairman

UNION COUNTY, BOARD OF COMMISSIONERS

Approved this 14 day of Sept, 1972.

Cliff Schum

W. J. Schum

Russell Elmer

CITY OF LAGRANDE, BOARD OF COMMISSIONERS

Approved this 9<sup>th</sup> day of August, 1972.

Virgil P. Morris

President City Comm

UNION COUNTY, PLANNING COMMISSION

Approved this 14<sup>th</sup> day of SEPT, 1972.

Karl R. Stone  
Administrator

COUNTY ASSESSOR

I hereby certify that pursuant to ORS 92.095, all ad valorem taxes and all special assessments, fees and other charges required by law to be placed on the 1972 tax roll which became a lien on this subdivision or will become a lien during this calendar year but not yet certified to the tax collector for collection, have been paid to me.

Date 8/16/72

Roy Hartsock  
Assessor

By \_\_\_\_\_

COUNTY SHERIFF

I hereby certify that all ad valorem taxes and all special assessments, fees and other charges required by law to be placed upon the tax roll which have become a lien on this subdivision and that now are due and payable have been paid.

Date August 16, 1972

Wm L. Moore Smith  
Sheriff

By Magdalene V. Buckley  
Deputy

COUNTY CLERK

Filed for record this 25 day of Sept, 1972, at 2<sup>15</sup> P.M. O'clock on page 69 in book 3 of plats of Union County.

Date Sept 25, 1972

SHIRLEY L. BOLIN - County Clerk

By Lucille Courtney - Deputy

For Declaration of Governmenty Conditions and Restrictions See # 48478