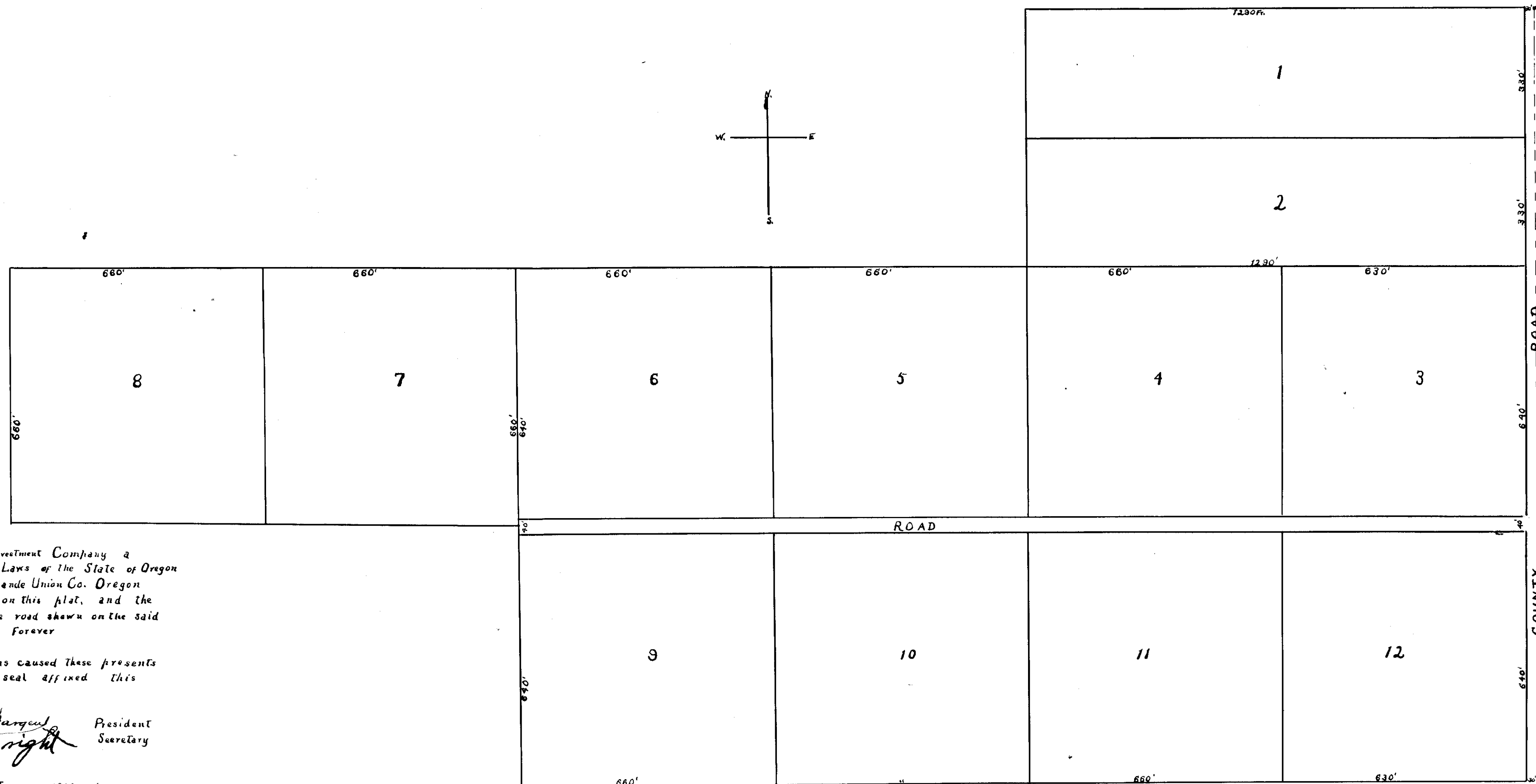


19100001

COVE ORCHARD TRACTS

Owned by La Grande Investment Co. La Grande, Or.
SITUATED in the N.E. 1/4 of N.E. 1/4; N 1/2 of S 1/2 of N.E. 1/4; S 1/2 of N.W. 1/4 of N.E. 1/4
and S 1/2 of N.E. 1/4 of N.W. 1/4 of Sec. 16 Township 3 South Range 40 East W. M.

Scale 200 ft = 1 inch



Dedication
Know All Men By These Presents, that the La Grande Investment Company a corporation organized and existing under and by virtue of the Laws of the State of Oregon and having its principal office and place of business at La Grande Union Co. Oregon has surveyed and platted into tracts as shown and described on this plat, and the same shall be known as Cove Orchard Tracts and that the road shown on the said plat is hereby dedicated to the public for its use and enjoyment forever

In witness whereof the La Grande Investment Company has caused these presents to be signed by its president and secretary and its corporate seal affixed this 3rd day of January 1910

La Grande Investment Company
By *W. A. Burgess* President
By *J. K. Wright* Secretary

State of Oregon) ss.
County of Union

Be it remembered that on this the day of January 1910 before me personally appeared the above named J.K. Wright Sec. of La Grande Investment Co. who is known by me to be the identical person he represents himself to be, and who acknowledge to me that he executed the foregoing instrument as the free and voluntary act and deed of the La Grande Investment Company, and that he is acquainted with the corporate seal of said corporation and the corporate seal hereto affixed is the corporate seal of the said La Grande Investment Company

In Witness Whereof I have hereunto set my hand and affixed my Notarial Seal on this the day and year last above in this certificate written

Moina S. Atkins
Notary Public for Oregon

State of Oregon) ss.
County of Union

I Arthur Curtis County Surveyor of Union County Oregon do hereby certify that the attached plat is true and correct and corresponds with the measurements on the ground. Witness my hand this 10 day of Dec. 1909
Arthur Curtis
County Surveyor

State of Oregon) ss.
County of Union

I T.A. Rinehart County Assessor of Union County Or. do hereby certify that the attached plat of the Cove Orchard Tracts is free from taxes and conforms to the law
T.A. Rinehart
County Assessor

Approved this 3rd day of Jan. 1910

J. C. Kelley
County Judge

County Commissioners

Filed for record Jan. 3 1910

J. R. Suitor
County Recorder