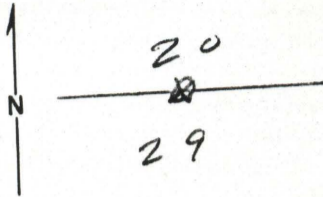


Index File No. R7
T 6S R. 42E R.D. UNION County UNION State ORG
Merid. W.M. N.F. W.W. Tract or Survey No. _____ Cor. No. _____

CORNER RECORD (SEARCH)
(Ref. FSM 7151.4)

CORNER DIAGRAM



DESCRIBE CORNER MONUMENT FOUND

STONE 16x8x6 ON TOP OF GROUND
MARKED $\frac{1}{4}$

DESCRIBE BEARING TREES OR OTHER OFFICIAL ACCESSORIES FOUND

50' PP STUMP THAT FITS, NOTES
COULD NOT FIND ANY SCAB
ALSO FENCE COR. N AND W

PHOTO IDENTIFICATION DATA

8/9/78
Photo No. EWP 21-117

Filed At. _____
Object Ident. _____
Ident. By _____
Signature _____

DESCRIBE CORNER LOCATION RELATIVE TO NEAR-BY FEATURES, ALSO HOW TO REACH CORNER

PLANE COORDINATE POSITION DATA

State _____ Zone _____
X _____
Y _____
Estab. By _____
Agency _____

Signature
GAH

Title _____

Division _____

Headquarters _____

Date 8/31/78

7100-52-(3/68)

UNION COUNTY SURVEYOR	
Date Received _____	
Date Filed <u>12-23-87</u>	
By <u>G. LANGLITZ, Deputy</u>	
File No. <u>414-87R</u>	

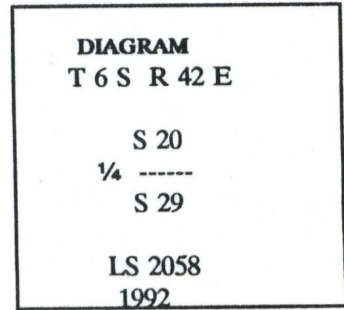
R-7

CERTIFIED RECORD OF LAND CORNER MONUMENTATION

History of original corner establishment:

Set volcanic rock 12 x 8 x 6 ins., 8 ins. in the ground for 1/4 sec. cor., marked 1/4 on the North face, from which:

- A pine, 30 ins. diam., bears S.10 1/2°E., 147 lks. dist. mkd. 1/4 S BT.
- A pine, 4 ins. diam., bears N.57 1/2°E., 285 lks. dist. mkd. 1/4 S BT.



Description of corner evidence found:

Found a stone, 12"x8"x6", in a small mound of stone, marked 1/4 on the North face, from which:

A pine stump, 30" diam., bears S.08°59'E., 97.56', partial blaze visible.

Description of monument and accessories I established to perpetuate the original location of this corner:

Set a 3" diam. U.S.F.S aluminum capped pipe, 30" long, with magnet, 24" in ground at position of marked stone and buried marked stone to South, from which:

- A pine, 15" diam., bears S.06°12'W., 53.71', scribed "T6S R42E S29 BT".
- A pine, 14" diam., bears N.80°06'W., 59.83', scribed "T6S R42E S20 BT".
- A pine, 7" diam., bears N.25°09'W., 24.74', scribed "T6S R42E S20 BT".
- A pine, 15" diam., bears N.59°58'E., 86.15', scribed "T6S R42E S20 BT".

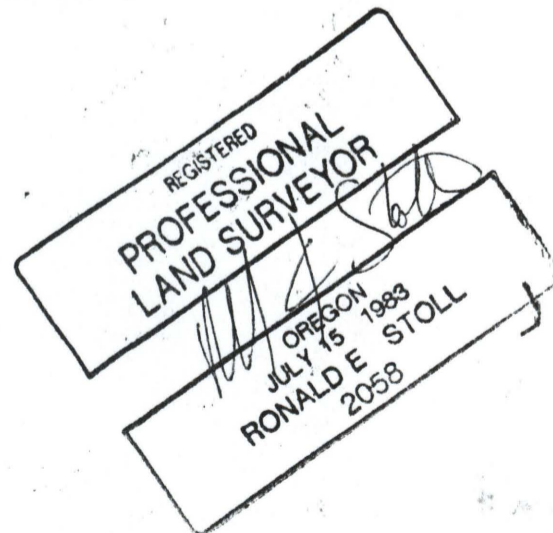
UNION COUNTY SURVEYOR

Date Received 8/18/94

Date Filed 10/22/94

By [Signature]

File No. 061-1994R



Office of _____ County of _____
 State of _____ I hereby certify that the within instrument was filed in this office
 for record on the _____ day of _____, 19____
 _____ by _____
 (COUNTY OFFICIAL) (DEPUTY)