

Index
File No. N 5

CORNER RECORD (SEARCH)
(Ref. FSM 7151.4)

Tract or
Survey No. _____

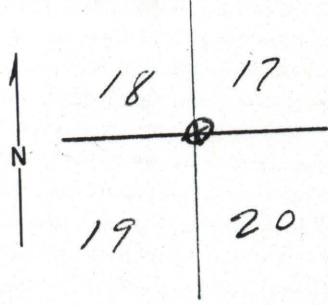
Cor.
No. _____

T 6S R. 42E
Merid. WM

R.D. UNION
N.F. NEW

County UNION
State OR

CORNER DIAGRAM



DESCRIBE CORNER MONUMENT FOUND

DESCRIBE BEARING TREES OR OTHER OFFICIAL ACCESSORIES FOUND

32" D.F. IN SEC 19 WITH FAINT SCRIBING
32" PP IN SEC 17 WITH SCRIB S42E S17
24" PP SNAG ON GROUND IN SEC 20 WITH
SCRIB

PHOTO IDENTIFICATION DATA

Photo No. EWD-21-99
Filed At. _____
Object Ident. _____
Ident. By _____
Signature _____

DESCRIBE CORNER LOCATION RELATIVE TO NEAR-BY FEATURES, ALSO HOW TO REACH CORNER

PLANE COORDINATE POSITION DATA

State _____ Zone _____
X _____
Y _____
Estab. By _____
Agency _____

Signature
E.A.H.

Title _____

Division _____

Headquarters _____

Date
9/21/77

7100-52 (3/68)

**UNION COUNTY
SURVEYOR**

Date Received _____

Date Filed 12-23-87

By G. LANGLITZ, DEPUTY

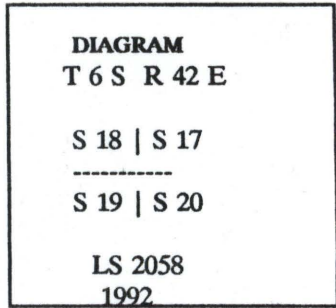
File No. 404-87R

N-5

CERTIFIED RECORD OF LAND CORNER MONUMENTATION

History of original corner establishment:

80.00 Set a post 4 ft. long 4 ins. in diam., 24 ins. in the ground, for corner to secs. 17, 18, 19, and 20. Marked T6S S17 on N.E. face, R42E S20 on S.E. face, S19 on S.W. face and S18 on N.W. face with 5 notches on the South and 5 notches on the East-edge, from which:



A pine, 22 ins. diam., bears N.36°E., 23 lks. dist. mkd. T6S R42E S17 BT.

A pine, 20 ins. diam., bears S.72°E., 15 lks. dist. mkd. T6S R42E S20 BT.

A fir, 20 ins. diam., bears S.75°W., 89 lks. dist. mkd. T6S R42E S17 BT.

A pine, 18 ins. diam., bears N.80°W., 102 lks. dist. mkd. T6S R42E S18 BT.

Description of corner evidence found:

A fir, 36" diam., bears S.75°W., 26.21', marked with partially open blaze.

A rotted pine stump, 29" diam., bears S.72°E., 8.95', no blaze visible.

A pine, 33" diam., bears N.36°E., 22.75', blaze open and scribing visible.

A dead and down pine, 28" diam., bears N.60°W., 67.3'.

Description of monument and accessories I established to perpetuate the original location of this corner:

No evidence of original monument found. Position established from intersection of record bearings from found original bearing trees. Set a 3" diam. U.S.F.S aluminum capped pipe, 30" long, with magnet, 22" in ground with mound of stone to cap, from which:

A fir, 13" diam., bears N.80°53'W., 18.94', scribed "T6S R42E S18 BT".

A fir, 17" diam., bears N.45°33'W., 29.00', scribed "T6S R42E S18 BT".

A fir, 9" diam., bears S.33°32'E., 40.58', scribed "T6S R42E S20 BT".

UNION COUNTY SURVEYOR
Date Received 8/18/94
Date Filed 10/22/94
By Guy T. Blaker
File No. 066-1994R



Office of _____ County of _____
State of _____ I hereby certify that the within instrument was filed in this office
for record on the _____ day of _____, 19____
_____ by _____
(COUNTY OFFICIAL) (DEPUTY)