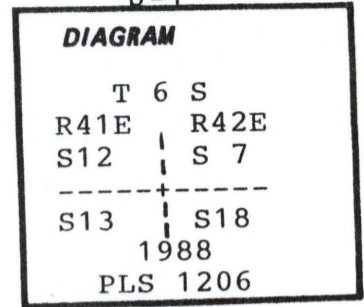


CERTIFIED RECORD OF LAND CORNER MONUMENTATION

J-1

**History of original corner establishment:**

Corner was originally established by J. Stone, U.S. Deputy Surveyor, under Contract No. 235, dated July 6, 1875. Surveyor General records state:  
Set a stone 14"X 7"X 6" from which:  
A 12" fir bears S48°W-35 lks. dist.  
A 12" fir bears N44°W-20 lks. dist.  
A 30" pine bears N35°E-24 lks. dist.



*See Survey 051-1994*

**Description of corner evidence found:**

Found a 3½" brass cap on a 1½" iron pipe stamped as diagram reads above. Bearing trees are as follows:  
A 7" pine bears N46°E-79.7 feet, scribed T6SR42ES7 with a bearing tree tag that reads "Hanley 6-15-88".  
A 11" pine bears S21°E-35.6 feet, scribed T6SR42ES18 with bearing tree tag "Hanley 6-15-88".  
A 9½" pine bears S67°W-73.3 feet, scribed T6SR41ES13 with bearing tree tag "Hanley 6-15-88".  
A 14" pine bears N86°W-61.9 feet, scribed T6SR41ES12 with bearing tree tag "Hanley 6-15-88".  
A 22" stump bears N35°E-15.0 feet, scribed T6SR42ES7 with bearing tree tag "Hanley 6-15-88".

**Description of monument and accessories I established to perpetuate the original location of this corner:**

None.

I hereby certify that the above corner monument was found to be properly monumented to U.S.F.S. standards by me on November 15, 1993.

Compass declination 18° East

REGISTERED  
PROFESSIONAL  
LAND SURVEYOR

*William R. Wells*

OREGON  
JULY 22, 1977  
WILLIAM R. WELLS  
1106

*Renews 12-31-94*

Office of..... County of.....  
State of....., I hereby certify that the within instrument was filed in this office  
for record on the..... day of..... 19.....

(COUNTY OFFICIAL)

(DEPUTY)

Form R6-7100-57 (9/71)

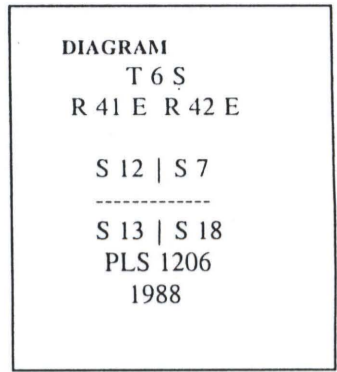
Date Received <i>11/3/94</i>
Date Filed <i>11/14/94</i>
By <i>Gregory T. Clark</i>
File No <i>143-1994 R</i>

**CERTIFIED RECORD OF LAND CORNER MONUMENTATION**

History of original corner establishment:

SURVEYED BY: J. STONE, 1875, CONTRACT NO. 235

SURVEYED BY: \_\_\_\_\_, 1988, COR. CERT NO.



Description of corner evidence found:

Found a 2 1/4" brass capped pipe, cap marked per diagram, in a 2' diam. mound of stone, from which:

- A pine, 9" in diam., bears S.67°25'W., 73.20', scribed "T6S R41E S13 BT".
- A pine, 15" in diam., bears N.86°36'W., 61.41', scribing unledgible.
- A pine, 8" in diam., bears N.45°57'E., 79.20', scribing unledgible.
- A pine, 13" in diam., bears S.20°32'E., 35.52', scribing unledgible.

Description of monument and accessories I established to perpetuate the original location of this corner:

REFERENCE: RECORD OF SURVEY, LONGSHOT CADASTRAL SURVEY  
 WITNESS TO MONUMENT: DAVID SUTHERLAND  
 BEARINGS TAKEN TO BRASS TAG AT CENTER OF BLAZE, DISTANCES MEASURED TO BRASS TAG ON SIDE CENTER OF TREE. OBSERVED WITH ELECTRONIC TOTAL STATION AND STEEL TAPE.  
 BASIS OF BEARINGS WAS A GEODETIC BEARING DETERMINED FROM GPS OBSERVATIONS.

REGISTERED  
 PROFESSIONAL  
 LAND SURVEYOR

*Ronald E. Stoll*  
 OREGON  
 JULY 15, 1953  
 RONALD E. STOLL  
 2058

UNION COUNTY  
 CLERK  
 \_\_\_\_\_  
 Date Received 10/28/98  
 Date Filed 10/31/98  
 By R. ROBINSON, DEPUTY  
 File No. 095-1998R

Office of \_\_\_\_\_ County of \_\_\_\_\_  
 State of \_\_\_\_\_ I hereby certify that the within instrument was filed in this office  
 for record on the \_\_\_\_ day of \_\_\_\_\_, 19\_\_\_\_  
 \_\_\_\_\_ by \_\_\_\_\_  
 (COUNTY OFFICIAL) (DEPUTY)

Alpha-Num.  
 Index # J-25 (T. 6 S., R. 41 E.)  
 Index # J-1 (T. 6 S., R. 42 E.)

**CERTIFIED RECORD OF LAND CORNER MONUMENTATION**  
**DIAGRAM**

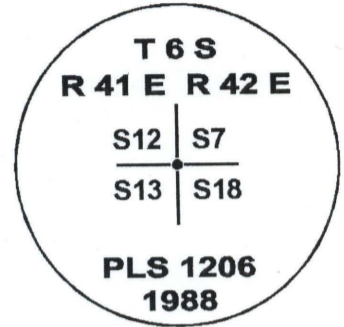
**History of original corner establishment:**

The original corner was set by John H. Stone, U.S. Deputy Surveyor, under Contract No. 235 dated July 6, 1875.

Record States: Set a stone 14" x 7" x 6" as per instructions for corner to Sections 18, 19, 13 & 24. (Note: should read Sections 7, 18, 12 & 13)

From which

- A Fir 12" dia. bears S. 48° W., 35 lks.
- A Fir 12" dia. bears N. 44° W., 20 lks.
- A Pine 30" dia. bears N. 35° E., 24 lks.



**Description of corner evidence found:**

A pine stump 36" dia. X 36" high bears N. 35° E., at 15.8 ft. Stump is severely rotted. While conducting traverse work in June, 1986 in order to perpetuate this corner, a barely visible "E" was found on the S.W. side of the above mentioned stump. Between June, 1986 and the return trip in June, 1988 to remonument the corner, the stump had undergone additional rotting and the "E" is no longer discernible. The corner location is such that road building and logging activity in the past have destroyed the original corner stone and the two additional witness trees.

**Description of monument and accessories I established to perpetuate the original location of the corner:**

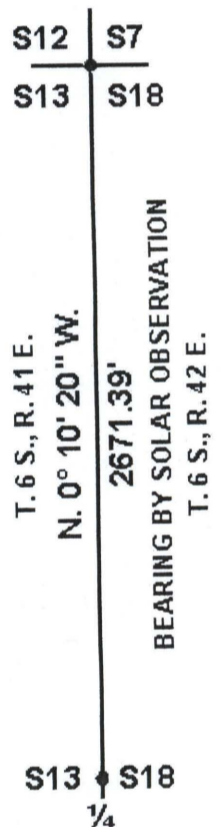
At the corner point as re-established from the one original found bearing tree, set 1 1/4" x 30" galv. iron pipe 24" into the ground with 2 1/2" brass cap marked as shown in the corner diagram. Constructed 36" stone mound around the monument

From which: New Bearing Trees

- A 9" dia. Ponderosa Pine bears S. 21° E., 35.6 ft. dist. mkd. T6S R42E S18 BT.
- A 14" dia. Ponderosa Pine bears N. 86° W., 61.9 ft. dist. mkd. T6S R41E S12 BT.
- A 8" dia. Ponderosa Pine bears N. 46° E., 79.7 ft. dist. mkd. T6S R42E S7 BT.
- A 10" dia. Ponderosa Pine bears S. 67° W., 73.3 ft. dist. mkd. T6S R41E S13 BT.

Set fence post 4' West from the corner with U.S.F.S. 54-9 sign attached.  
 Painted the blazes and a 6" band around the bearing trees and attached 54-3 sign to each.

I, Thomas J. Hanley, certify that this corner was properly reestablished as witnessed by Jim Hanley, Tom Fisk, Larry McBroom, and Andy Marlette on June 15, 1988. This is an accurate representation of a handwritten Certified Record of Land Corner Monumentation, from a job file for Bucky Wirth, that was not typed and filed with the Union County Surveyor, until February, 2003.



**UNION COUNTY SURVEYOR**

Date Received 2/28/03

Date Filed 2/28/03

By R. ROBINSON, DEPUTY

File No. 013-2003R

**REGISTERED PROFESSIONAL LAND SURVEYOR**

*Thomas J. Hanley*

**OREGON**  
 JULY 13, 1979  
**THOMAS J. HANLEY**  
 1817

Renews June 30, 2003