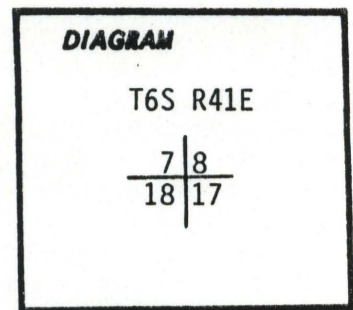


CERTIFIED RECORD OF LAND CORNER MONUMENTATION

History of original corner establishment:

Original Survey by W.B. Barr under Contract No. 516 dated Sept. 16, 1884.

Set a basalt rock 15x14x9, 10 ins. in ground for Cor. to Sec's. 7, 8, 17 and 18 marked with 4 notches on the S and 5 notches on the E edges. Raised mound of rock alongside, pits impracticable.

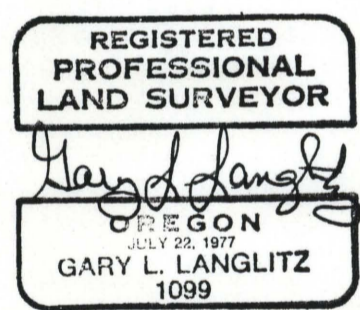


Description of corner evidence found:

Found a basalt stone, 15"x14"x9" with distinct chiseled notches approx. 2"-3" long as described by the original surveyor, lying loose among the scattered rocks of the original mound of stone.

Description of monument and accessories I established to perpetuate the original location of this corner:

At the position of the found basalt stone, we set a 2"x 30" galvanized iron pipe, 20" in the ground and in a mound of stone 4 ft. diameter and 1 foot high, with brass cap attached, marked:



Union Co. Surveyor

T6S R41E

S7	S8
S18	S17

PLS 1099
1984

The found basalt stone is buried along the West side of the iron pipe.

No corner accessories available. Corner is located on a low ridge in open area of sagebrush and grass. Placed steel fencepost with "Attention" sign attached approx. 8 feet east of monument.

July 26, 1984
Gary Langlitz, Deputy County Surveyor
Dave Dahlstrom, U.S. Forest Service

Office of..... County of.....
 State of....., I hereby certify that the within instrument was filed in this office
 for record on the..... day of....., 19.....
 by
 (COUNTY OFFICIAL) (DEPUTY)

UNION COUNTY SURVEYOR

Received 7-30-84
 Date Filed 7-30-84
 By G. LANGLITZ, DEPUTY
 File No. 931-84R

CERTIFIED RECORD OF LAND CORNER MONUMENTATION

History of original corner establishment:

SURVEYED BY: W.B. BARR, 1885, CONTRACT NO. 516

SURVEYED BY: G. LANGLITZ, LS 1099, 1984, CORNER MONUMENT NO. 931-84R

Found a basalt stone 15"x14"x9" with distinct chiseled notches approx. 2"-3" long as described by the original surveyor, lying among the scattered rocks of the original mound of stone.

At the position of the found basalt stone, we set a 2"x30" galvanized iron pipe, 20" in the ground and in a mound of stone 4 ft. Diameter and 1 foot high, with brass cap attached.

The found basalt stone is buried along the west side of the iron pipe.

No corner accessories available.

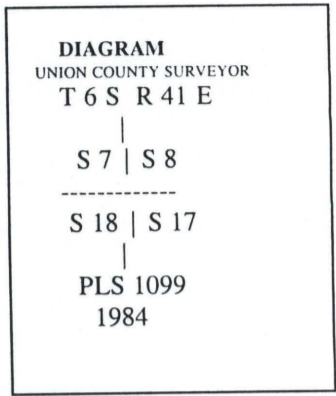
Description of corner evidence found:

Found a 3" brass capped pipe, cap marked per diagram, 3" above the ground with a 3' collar of stone.

Description of monument and accessories I established to perpetuate the original location of this corner:

- A rebar, 1/2" diam., bears N.25°17'W., 19.98', 2" above the ground, with aluminum cap, marked " S7 RM".
- A rebar, 1/2" diam., bears N.49°54'E., 15.98', 2" above the ground, with aluminum cap, marked "S8 RM".
- A rebar, 1/2" diam., bears S.37°05'E., 25.01', 2" above the ground, with aluminum cap, marked "S17 RM".
- A rebar, 1/2" diam., bears S.51°48'W., 24.75', 2" above the ground, with aluminum cap, marked "S18 RM".

REFERENCE: RECORD OF SURVEY, LONGSHOT CADASTRAL SURVEY
WITNESS TO MONUMENT: DAVID SUTHERLAND
BEARINGS AND DISTANCES TAKEN TO THE CENTER OF CAP. OBSERVED WITH ELECTRONIC TOTAL STATION AND STEEL TAPE.
BASIS OF BEARINGS WAS A GEODETIC BEARING DETERMINED FROM GPS OBSERVATIONS.



UNION COUNTY SURVEYOR

Date Received 10/28/98

Date Filed 10/31/98

By R. ROBINSON DEPUTY

File No. 175-1998R

REGISTERED PROFESSIONAL LAND SURVEYOR

Ronald E. Stoll 9/98

OREGON
JULY 15 1933
RONALD E. STOLL
2058

Office of _____ County of _____
 State of _____ I hereby certify that the within instrument was filed in this office
 for record on the ____ day of _____, 19__
 _____ by _____
 (COUNTY OFFICIAL) (DEPUTY)