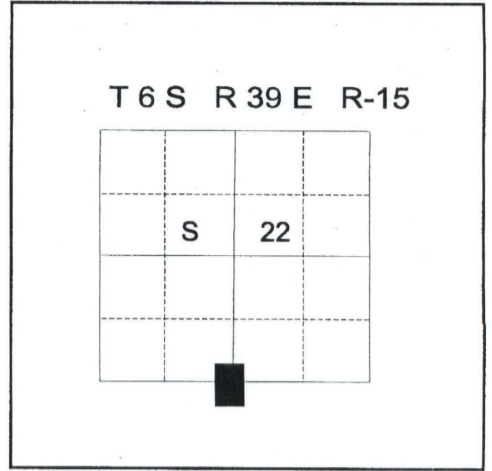


CERTIFIED RECORD OF LAND CORNER MONUMENTATION

HISTORY OF ORIGINAL CORNER ESTABLISHMENT:

Corner originally established by David P. Thompson under GLO contract Number 103, dated September 3, 1863. Surveyor General record states:

Set post for 1/4 sec cor in mound of earth, with charred stake, pits, trench as per instructions



No record of subsequent monumentation found in Union County survey records
DESCRIPTION OF CORNER EVIDENCE FOUND:

Found no evidence of the original post or mound of earth as called for in the original notes.

See Union County Survey Number 012-2001.

DESCRIPTION OF MONUMENT AND ACCESSORIES I ESTABLISHED TO PERPETUATE THE ORIGINAL LOCATION OF THIS CORNER:

At the proportioned position of the 1/4 corner which is located on the west bank of the Powder River, I set a 2½"x30" aluminum pipe with aluminum cap marked as shown, 30 inches in the ground, from which;

NEW BEARING TREES AND OBJECT:

A 5/8"x30" iron pin with aluminum cap marked Union County Surveyor NE RP, which bears North 67°East a distance of 4.65 feet.

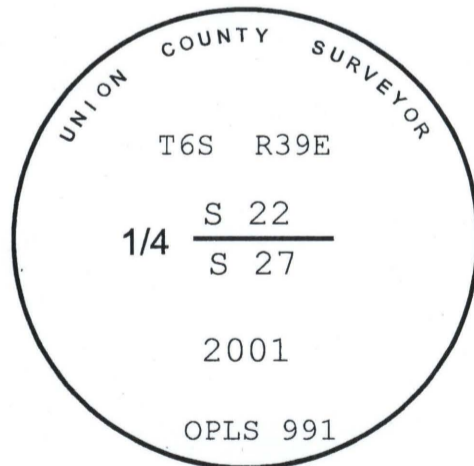
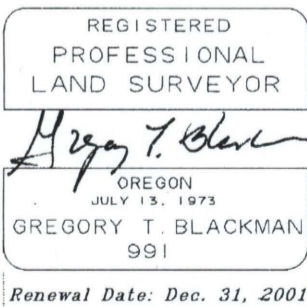
A 5/8"x30" iron pin with aluminum cap marked Union County Surveyor SE RP, which bears South 35°East a distance of 6.44 feet.

A 5/8"x30" iron pin with aluminum cap marked Union County Surveyor SW RP, which bears South 55°West a distance of 26.49 feet in right of way fence.

A 5/8"x30" iron pin with aluminum cap marked Union County Surveyor NW RP, which bears North 25° West a distance of 22.44 feet in right of way fence.

I hereby certify that the corner was monumented on April 3, 2001.

Witness: Greg T. Blackman Jr. and Norb Volny



Date Received 3/30/01
 Date Filed 4/14/01
R. ROBINSON, DEPUTY
028-2001R

I used a steel tape and magnetic compass in the establishment of the new accessories. I used 17° East declination, the distances are to the center of the aluminum cap.

**HORIZONTAL CONTROL DATA
UNION COUNTY, OREGON
OREGON STATE PLANE, NORTH ZONE (3601)**

STA NAME: 200141

QUARTER COMMON TO: 22 & 27

TWP. 6 S. RGE. 39 E.

GEODETIC COORD: NAD 83(91)

DATE TIED: 3 APRIL 2001

LAT: 45 ° 1 ' 15.64156 " N

SURVEYOR: GREGORY T. BLACKMAN
OPLS 991

LONG: 117 ° 55 ' 19.63810 " W

FIRM: BAGETT, GRIFFITH, & BLACKMAN
2006 ADAMS AVENUE
LAGRANDE, OR 97850
(541) 963-6092

SP. COOR: NAD 83(91)

N: 504387.865 INT FT.

E: 8868530.264 INT FT.

TYPE: GPS

THETA: 1 ° 49 ' 41.5028909 "

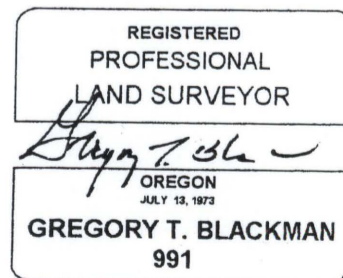
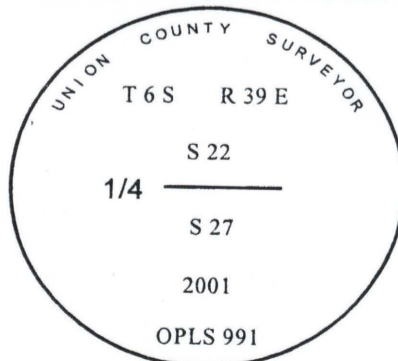
ORDER: SECOND CLASS: 1

SCALE FACTOR: 0.9998978916

ELEV: 3255.24 US FT.

ELEV: DATUM: NGVD 29

COMMENTS:



Renewal Date: Dec. 31, 2001

1 METER = 3.2808333333... US FEET = 39.37 INCHES

1 METER = 3.280839895 INT'L FEET OR 1 INCH = 2.54 CM

TO CALCULATE ELEVATION FACTOR (IN THE NORTH AMERICAN CONTINENT)

DIVIDE 20,906,000 BY (20,906,000 + ELLIPSOID ELEV. IN FEET)

**HORIZONTAL CONTROL DATA
UNION COUNTY, OREGON
OREGON STATE PLANE, NORTH ZONE (3601)**

STA NAME: 200141ECC

LOCATED IN THE SE QUARTER SEC 22

TWP. 6 S. RGE. 39 E.

GEODETIC COORD: NAD 83(91)

DATE TIED: 28 MARCH 2001

LAT: 45 ° 1 ' 19.09374 " N

SURVEYOR: GREGORY T. BLACKMAN
OPLS 991

LONG: 117 ° 55 ' 7.61888 " W

FIRM: BAGETT, GRIFFITH, & BLACKMAN
2006 ADAMS AVENUE
LAGRANDE, OR 97850
(541) 963-6092

SP. COOR: NAD 83(91)

N: 504764.844 INT FT.

E: 8869381.913 INT FT.

TYPE: GPS

THETA: 1 ° 49 ' 50.0267518 "

ORDER: SECOND CLASS: 1

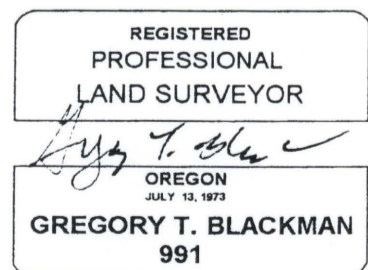
SCALE FACTOR: 0.9998978487

ELEV: 3254.57 US FT.

ELEV: DATUM: NGVD 29

COMMENTS:

Point is a cotton gin tooth set in the West edge of asphalt on Frontage Road.



Renewal Date: Dec. 31, 2001

METER = 3.2808333333... US FEET = 39.37 INCHES
1 METER = 3.280839895 INT'L FEET OR 1 INCH = 2.54 CM
TO CALCULATE ELEVATION FACTOR (IN THE NORTH AMERICAN CONTINENT)
DIVIDE 20,906,000 BY (20,906,000 + ELLIPSOID ELEV. IN FEET)