

UNION COUNTY SURVEYOR

CERTIFIED RECORD OF LAND CORNER MONUMENTATION

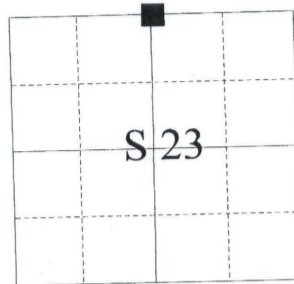
HISTORY OF ORIGINAL CORNER ESTABLISHMENT:

Corner originally established by David P. Thompson, contract No. 103, dated September 3, 1863. Surveyor General record states:

Set post for 1/4 sec corner in mound of earth with charred stakes, pits, trenches, as per instructions.

Survey No. 064-1991 sets a 5/8" x 30" iron pin with plastic cap marked HANLEY ENGRG PLS 1206
Survey No. 066-1991 found 5/8" iron pin with plastic cap marked HANLEY ENGRG PLS 1206

T 6 S R 39 E N-19



No record of subsequent monumentation found in Union County survey records.

DESCRIPTION OF CORNER EVIDENCE FOUND:

Found 5/8" iron pin with plastic cap marked HANLEY ENGRG PLS 1206

See Survey No. 012-2001

DESCRIPTION OF MONUMENT AND ACCESSORIES I ESTABLISHED TO PERPETUATE THE ORIGINAL LOCATION OF THIS CORNER:

At position of 5/8" iron pin, I set a 2 1/2" x 30" aluminum monument, marked as shown below, 24" in the ground from which:

A 5/8" x 30" iron pin with 1 1/2" aluminum cap in a North-South fenceline bears N2°W, a distance of 18.97 feet, marked UNION COUNTY SURVEYOR NE RP.

A 5/8" x 30" iron pin with 1 1/2" aluminum cap in a East-West fenceline bears S84°E, a distance of 7.20 feet, marked UNION COUNTY SURVEYOR SE RP.

A 5/8" x 30" iron pin with 1 1/2" aluminum cap bears S29°W, a distance of 15.74 feet, marked UNION COUNTY SURVEYOR SW RP.

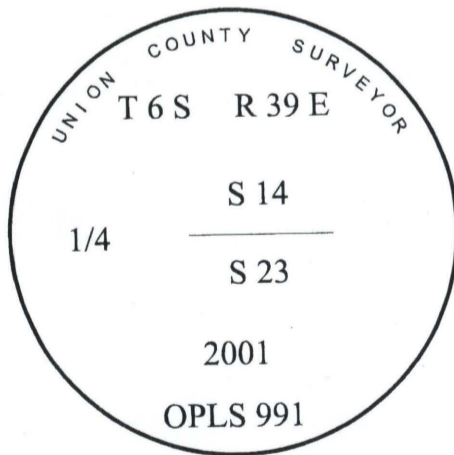
A 5/8" x 30" iron pin with 1 1/2" aluminum cap bears N56°W, a distance of 13.83 feet, marked UNION COUNTY SURVEYOR NW RP.

I hereby certify that the corner was monumented on March 26, 2001.
Witness: Norbert Volny and Gregory T. Blackman, Jr.

REGISTERED
PROFESSIONAL
LAND SURVEYOR

Gregory T. Blackman
OREGON
JULY 13, 1973
GREGORY T. BLACKMAN
991

Renewal Date: Dec. 31, 2001



UNION COUNTY SURVEYOR

Date Received 3/30/01

Date Filed 4/14/01

Filed By R. ROBINSON, DEPUTY

File Number 026-2001R

I used a Leica 530 GPS unit in the establishment of the new accessories. The Basis of Bearings is the same as that shown on Survey No. 012-2001. The distances are to the center of a 5/8"x30" rebar with 1 1/2" aluminum cap marked Union County Survey Marker.

HORIZONTAL CONTROL DATA

UNION COUNTY, OREGON

OREGON STATE PLANE, NORTH ZONE (3601)

STA NAME: 200144

QUARTER COMMON TO: 14 & 23

TWP. 6 S. RGE. 39 E.

GEODETIC COORD: NAD 83(91)

DATE TIED: 28 MARCH 2001

LAT: 45 ° 2 ' 7.43125 " N

SURVEYOR: GREGORY T. BLACKMAN
OPLS 991

LONG: 117 ° 54 ' 5.65772 " W

FIRM: BAGETT, GRIFFITH, & BLACKMAN
2006 ADAMS AVENUE
LAGRANDE, OR 97850
(541) 963-6092

SP. COOR: NAD 83(91)

N: 509800.056 INT FT.

E: 8873672.379 INT FT.

TYPE: GPS

THETA: 1 ° 50 ' 33.9687425 "

ORDER: SECOND CLASS: 1

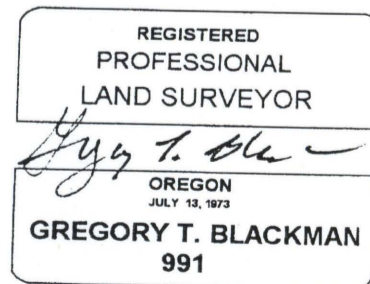
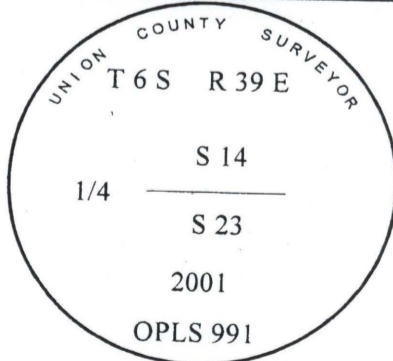
SCALE FACTOR: 0.9998972786

ELEV: 3220.59 US FT.

ELEV: DATUM: NGVD 29

COMMENTS:

Point is next to railroad tie corner, tripod setup not possible.



Renewal Date: Dec. 31, 2001

METER = 3.280833333... US FEET = 39.37 INCHES

1 METER = 3.280839895 INT'L FEET OR 1 INCH = 2.54 CM

TO CALCULATE ELEVATION FACTOR (IN THE NORTH AMERICAN CONTINENT)

DIVIDE 20,906,000 BY (20,906,000 + ELLIPSOID ELEV. IN FEET)