

**CERTIFIED RECORD OF LAND CORNER MONUMENTATION**  
**UNION COUNTY, OREGON**

**HISTORY OF ORIGINAL CORNER ESTABLISHED**

Corner originally established by David Thompson under GLO Contract No. 103, dated September 1863.  
Surveyor General record states:

Set post for 1/4 Sec corner in mound of Earth with charred stake.

Corner found by Kimbrell in 1887. See Old Book Survey page 44.

**DESCRIPTION OF CORNER EVIDENCE FOUND:**

None  
See Union County Survey Number 012-2015

**DESCRIPTION OF MONUMENT AND ACCESSORIES I ESTABLISHED TO PERPETUATE THE ORIGINAL LOCATION OF THIS CORNER:**

At the position determined by survey, I set 20" copper clad monument with a 2 1/2" brass cap marked as shown below 30" in the ground. From which:

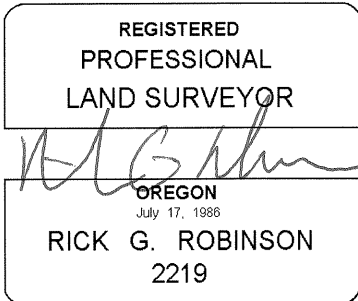
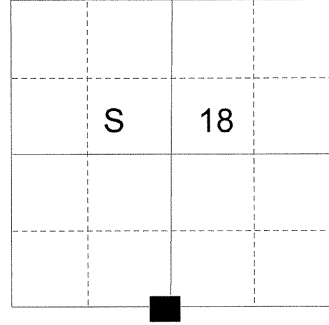
**NEW BEARING OBJECTS:**

- A 5/8" x 30" iron rod with a 1 1/2" aluminum cap bears North 38°37' East, a distance of 55.19 feet, marked UNION COUNTY SURVEYOR NE RP.
- A 5/8" x 30" iron rod with a 1 1/2" aluminum cap bears South 23°34' East, a distance of 45.98 feet, marked UNION COUNTY SURVEYOR SE RP.
- A 5/8" x 30" iron rod with a 1 1/2" aluminum cap bears South 47°50' West, a distance of 66.50 feet, marked UNION COUNTY SURVEYOR SW RP.
- A 5/8" x 30" iron rod with a 1 1/2" aluminum cap bears North 30°13' West, a distance of 51.11 feet, marked UNION COUNTY SURVEYOR NW RP.

I hereby certify that this corner was monumented on February 17, 2015.

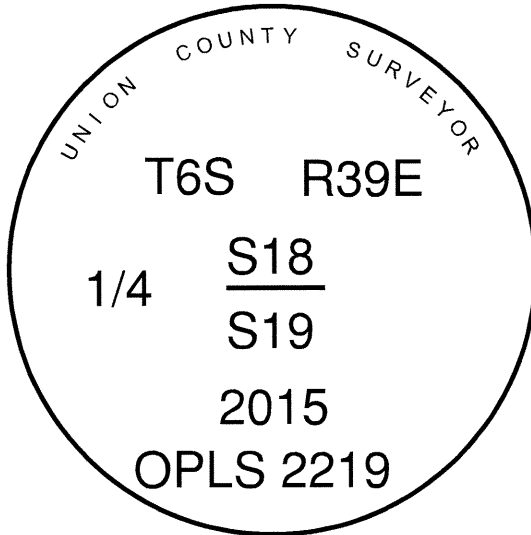
Witness: Thomas J. Kopp

T 6 S R 39 E N-03



Renewal Date: December 31, 2016

<b>UNION COUNTY SURVEYOR</b>	
Date Received	<u>2/25/15</u>
Date Filed	<u>2/25/15</u>
Filed By	<u>[Signature] DEPUTY</u>
File Number	<u>067-2015R</u>



Bearing and distance to the accessories were determined by GPS observation with a Leica GS-14 unit. The Basis of Bearing is that of Union County Survey Number 012-2015.

**HORIZONTAL CONTROL DATA**  
**UNION COUNTY, OREGON**  
**OREGON STATE PLANE, NORTH ZONE (3601)**

STA NAME: 201508

1/4 SECTION CORNER COMMON TO SECTIONS 18 AND 19

TWP. 6 S. RGE. 39 E.

GEODETIC COORD: NAD 83(91)

DATE TIED: February 18, 2015

LAT: 45 ° 2 ' 8.45279 " N

SURVEYOR: RICK G. ROBINSON  
OPLS 2219

LONG: 117 ° 59 ' 0.05854 " W

FIRM: BAGETT, GRIFFITH, & BLACKMAN  
2006 ADAMS AVENUE  
LAGRANDE, OR 97850  
(541) 963-6092

SP. COOR: NAD 83(91)

N: 509234.372 INT FT.

E: 8852540.302 INT FT.

TYPE: GPS

THETA: 1 ° 47 ' 5.18379709 "

ORDER: SECOND CLASS: 1

SCALE FACTOR: 0.9998972672

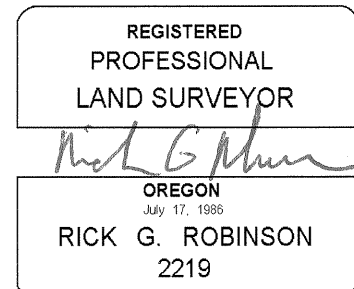
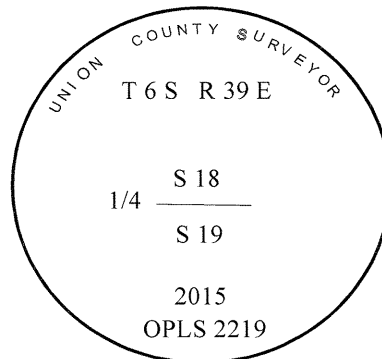
ELEV: 3472.84 US FT.

ELEV: DATUM: NGVD 29

---

COMMENTS:

2 1/2" Aluminum monument in centerline  
of Coughanhour Lane



Renewal Date: December 31, 2016

1 METER = 3.2808333333... US FEET = 39.37 INCHES

1 METER = 3.280839895 INT'L FEET OR 1 INCH = 2.54 CM

TO CALCULATE ELEVATION FACTOR ( IN THE NORTH AMERICAN CONTINENT)

DIVIDE 20,906,000 BY (20,906,000 + ELLIPSOID ELEV. IN FEET)