

CERTIFIED RECORD OF LAND CORNER MONUMENTATION
UNION COUNTY, OREGON

HISTORY OF ORIGINAL CORNER ESTABLISHED

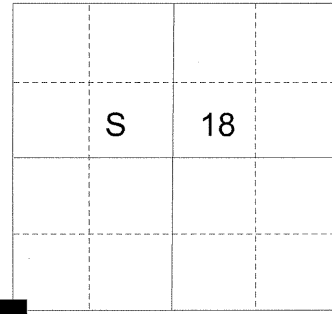
Corner originally established by Timothy W. Davenport under GLO Contract No. 102, dated July 20, 1863. Surveyor General record states:

Set post corner to Secs 18, 19, 13 & 24. Made mound of rock.

Corner found by Kimbrell in 1887. See Old Book Survey no. 23, page 44.

Corner found by Kimbrell in 1888. See Old Book Survey no. 30, page 55.

T 6 S R 39 E N-01



DESCRIPTION OF CORNER EVIDENCE FOUND:

None
See Union County Survey Number 012-2015

DESCRIPTION OF MONUMENT AND ACCESSORIES I ESTABLISHED TO PERPETUATE THE ORIGINAL LOCATION OF THIS CORNER:

At the position determined by survey, I set 2 1/2" x 30" aluminum pipe with a 2 1/2" aluminum cap marked as shown below 26" in the ground with a collar of stone 1 1/2 feet in diameter. From which:

NEW BEARING OBJECTS:

- A 5/8" x 30" iron rod with a 1 1/2" aluminum cap bears North 81°32' East, a distance of 8.15 feet, marked UNION COUNTY SURVEYOR NE RP.
- A 5/8" x 30" iron rod with a 1 1/2" aluminum cap bears South 2°57' East, a distance of 13.77 feet, marked UNION COUNTY SURVEYOR SE RP.
- A 5/8" x 30" iron rod with a 1 1/2" aluminum cap bears South 78°13' West, a distance of 12.63 feet, marked UNION COUNTY SURVEYOR SW RP.
- A 5/8" x 30" iron rod with a 1 1/2" aluminum cap bears North 9°47' West, a distance of 11.77 feet, marked UNION COUNTY SURVEYOR NW RP.

I set a steel fencepost approximately 2 feet North of corner monument.

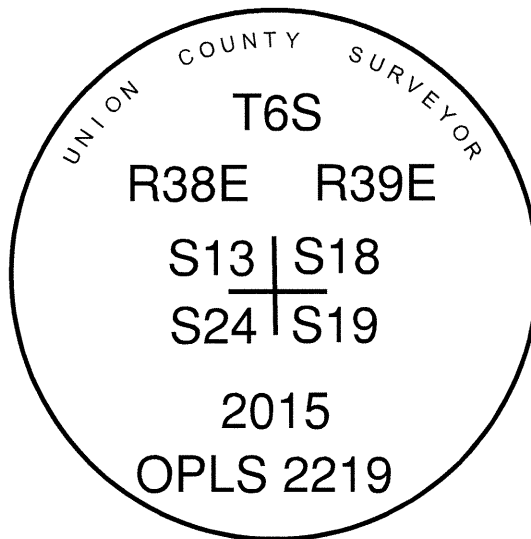
I hereby certify that this corner was monumented on February 17, 2015.

Witness: Thomas J. Kopp

REGISTERED
PROFESSIONAL
LAND SURVEYOR

Rick G. Robinson
OREGON
July 17, 1986
RICK G. ROBINSON
2219

Renewal Date: December 31, 2016



**UNION COUNTY
SURVEYOR**

Date Received 2/25/15

Date Filed 2/25/15

Filed By *[Signature]* DEPUTY

File Number 066-2015R

Bearing and distance to the accessories were determined by GPS observation with a Leica GS-14 unit. The Basis of Bearing is that of Union County Survey Number 012-2015.

HORIZONTAL CONTROL DATA
UNION COUNTY, OREGON
OREGON STATE PLANE, NORTH ZONE (3601)

STA NAME: 201507

SECTION CORNER COMMON TO SECTIONS 13, 18, 19 AND 24

TWP. 6 S. RGE. 38 & 39 E.

GEODETIC COORD: NAD 83(91)

DATE TIED: February 18, 2015

LAT: 45 ° 2 ' 8.45869 " N

SURVEYOR: RICK G. ROBINSON
OPLS 2219

LONG: 117 ° 59 ' 35.08551 " W

FIRM: BAGETT, GRIFFITH, & BLACKMAN
2006 ADAMS AVENUE
LAGRANDE, OR 97850
(541) 963-6092

SP. COOR: NAD 83(91)

N: 509156.788 INT FT.

E: 8850026.400 INT FT.

TYPE: GPS

THETA: 1 ° 46 ' 40.3431616 "

ORDER: SECOND CLASS: 1

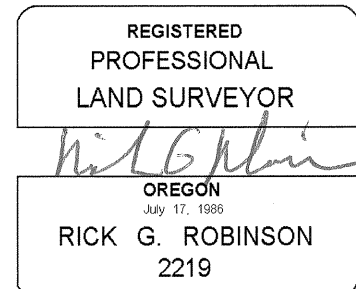
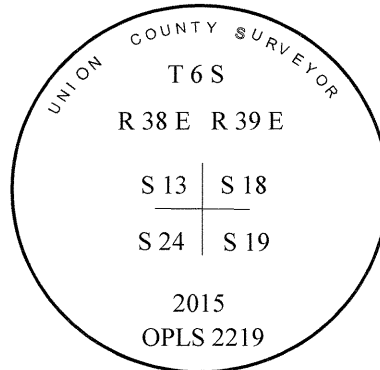
SCALE FACTOR: 0.9998972671

ELEV: 3499.73 US FT.

ELEV: DATUM: NGVD 29

COMMENTS:

2 ½" Aluminum monument



Renewal Date: December 31, 2016

1 METER = 3.2808333333... US FEET = 39.37 INCHES

1 METER = 3.280839895 INT'L FEET OR 1 INCH = 2.54 CM

TO CALCULATE ELEVATION FACTOR (IN THE NORTH AMERICAN CONTINENT)

DIVIDE 20,906,000 BY (20,906,000 + ELLIPSOID ELEV. IN FEET)