

Subdivisions, T. 6 S., R. 38 E.

Chains North, bet. secs. 17 and 18.
 Var. 21°10'E.

8.50 Spur, course East.

17.00 Canyon, course E.

25.00 Spur, course E.

35.50 Anthony Creek, 15 lks. wide, flows East.

40.00 Set stake, 4 ft. long, 4 ins. diam., 18 ins. in the ground for ¼ sec. cor.; from which

A willow, 5 ins. dia., bears S.59°W., 5 lks.
 A cottonwood, 6 ins. dia., bears N.68°E., 30 lks.

55.00 Spur, course W.

78.25 Canyon, course S.45°W.

80.00 Marked basalt rock, 16x8x8 for cor. to secs. 7, 8, 17, and 18; from which

A pine, 30 ins. dia., bears N.38°E., 86 lks. 56 8/10
 A pine, 40 ins. dia., bears N.55°W., 61 lks. 40 3/10

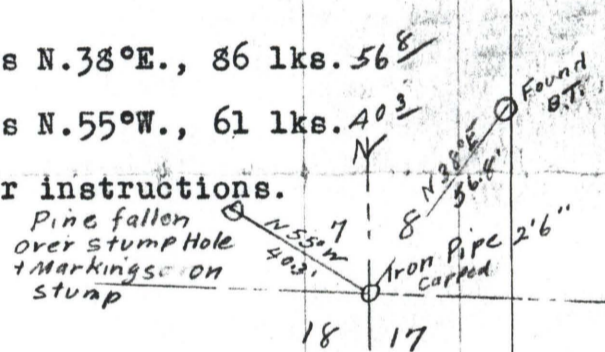
Raised mound of rock as per instructions.

Country broken and mountainous.

Soil, poor and rocky.

Timber, 2nd class fir, pine, and tamarack.

Undergrowth, same.



East, on a random line bet. secs. 8 and 17.

Var. 21°10'E.

40.00 Set temporary ¼ sec. cor.

79.66 Intersect 455 lks. South of cor. to secs. 8, 9, 16, and 17. S.86°45'W., on a true line.

Var. 21°15'E.

Ascend.

39.83 Marked basalt rock, 14x9x6 for ¼ sec. cor.; from which

A pine, 24 ins. dia., bears N.50°E., 134 lks. 88 4/10

A pine, 24 ins. dia., bears S.39°E., 84 lks. 55 4/10

45.00 Descend.

79.66 Corner to secs. 7, 8, 17, and 18.

Country rolling. Soil, 2nd class. Timber, scattering pine.

No undergrowth.

Sept. 19th.

