

Index File No. V-1
T 55 R. 42 E

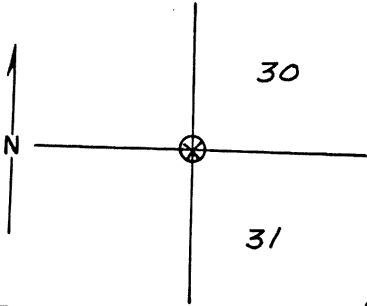
CORNER RECORD (SEARCH)

Tract or Survey No. _____ Cor. No. _____

Merid. Will.

R.D. _____ County UNION
N.F. W-W State OREGON

CORNER DIAGRAM



DESCRIBE CORNER MONUMENT FOUND

DESCRIBE BEARING TREES OR OTHER OFFICIAL ACCESSORIES FOUND

14" WL IN SEC. 30 WITH SCRIBING 55 R42 E.
Sec. 30

PHOTO IDENTIFICATION DATA

Photo No. ENW 8-106
7/24/64

Filed At. _____

Object Ident. _____

Ident. By _____

Signature

DESCRIBE CORNER LOCATION RELATIVE TO NEAR-BY FEATURES, ALSO HOW TO REACH CORNER

PLANE COORDINATE POSITION DATA

State _____ Zone _____

X _____

Y _____

Estab. By _____

Agency

Signature EAH

Title _____ Division _____ Headquarters _____

Date 10-11-68

7100-52
REV. 65 5

UNION COUNTY SURVEYOR	
Date Received _____	
Date Filed <u>12-28-87</u>	
By <u>G. LANGLITZ, Deputy</u>	
File No. <u>462-87R</u>	

V-1

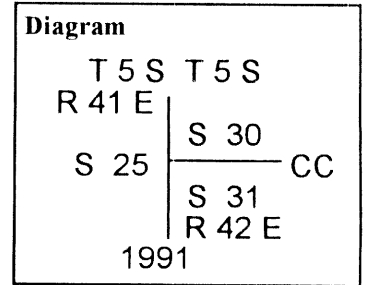
CERTIFIED RECORD OF LAND CORNER MONUMENTATION

V-1

Closing Corner of Section 30 & 31, T.5S., R.42E., W.M.

History of original corner establishment:

The corner was originally established by **James P. Currin**, U. S. Deputy Surveyor, Contract Number 693, during **1899**. His record states:
"Intersect W. bdy of Tp. 196 lks N. of cor to sec. 25-30-31 and 36."
"I set a pine post 4 ft. long 4 ins. square, 16 ins. in ground for closing Cor. bet. Secs. 30 and 31. marked T.5S. S.30 on N. side. R.42E. S.31 on S. side. C.C. on E. side.



From which

A Tamarack 10 ins. diam. bears N 67° E, 31 lks. dist marked T.5S. R.42E. S30. C.C. B.T.

A Tamarack 10 ins. diam. bears S 56° E, 48 lks. dist. marked T.5S. R.42E. S.31. C.C. B.T.”

1991, Philip G. Griffin, Cadastral Surveyor, BLM, conducted a dependent resurvey in this township, at 1.980 chains, N. 0° 18’ 00” W., of the sec. cor. of sec. 25 & 36 only, T. 5 S., R. 41 E., his record states:

“From this point, the original closing cor. of sec. 30 and 31, T. 5 S., R. 42 E., bears East, 0.053 chs. dist., determined at record bearing and distance from the remains of the original bearing trees:

A larch, 13 ins. diam., bears N. 67° E., 31 lks. dist., with scribe marks 30 legible on opened blaze.

A root wad, bears S. 56° E., 48 lks. dist., with larch log alongside, 10 ins. diam., with fragmentary scribe marks legible on partially healed, rotting blaze.

At the corner point

Set a stainless steel post, 28 ins. long, 2 1/2 ins. diam., 22 ins. in the ground, with brass cap mkd:” (As shown in the diagram above.)

from which a new bearing tree

A larch, 22 ins. diam., bears S. 37° E., 61 lks. dist., mkd. T5S R42E S31 CC BT.”

Deposit a white “DEEP-1” magnetic marker at the base and set a 6 ft. steel fence post alongside the stainless steel post.”

Description of corner evidence found:

At a point 130.37 ft., N. 1° 12’ 03” E., of the sec. cor. of sec. 25 & 36 only, T. 5 S., R. 41 E., I found:

A stainless steel post, 2 1/2 ins. diam., 6 ins. above the ground, with brass cap marked as shown in the diagram above.

from which original bearing trees:

A larch, 13 ins. diam., bears N. 67° E., 20.5 ft. dist., with scribe marks “30” legible on opened blaze.

A root wad, bears S. 56° E., 31.7 ft. dist., with fragmentary scribe marks legible on partially healed, rotting blaze.

from which bearing tree established by Griffin:

A larch, 22 ins. diam., bears S. 37° E., 39.4 ft. dist. (record 40.3 ft.), marked “T5S R42E S31 CC BT.”

Found a 6 ft. steel fence post alongside the stainless steel post with a Land Survey Monument sign.

Continued on page 2.

CERTIFIED RECORD OF LAND CORNER MONUMENTATION

V-1

Closing Corner of Section 30 & 31, T.5S., R.42E., W.M.

Continued from page 1.

Description of monument and accessories I established to perpetuate the original location of this corner:

I set steel post with a Property Boundary sign, West, 3.4 feet from the monument (on the National Forest property boundary line).

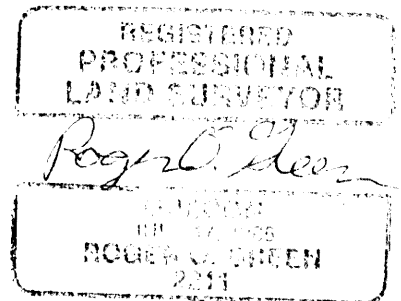
I hereby certify that the above corner was perpetuated by me and my crew on September 29, 1997.

Compass declination used 18 1/2° East.

See also, filed survey plat.

Witnessed by crew member: Roanna K. Ruston

8/5/98
8/29/98
R. ROBINSON, DEPUTY
File No. 058-1998R



Current registration
period ends 6-30-99.

JUN 27 1999

Dependent Resurvey of a Portion of the East Boundary,
T. 5 S., R. 41 E., Willamette Meridian, Oregon

CHAINS

A fir, 8 ins. diam., bears S. 50° W., 24 lks. dist.,
with healed double blaze.

and a new bearing tree

A lodgepole pine, 14 ins. diam., bears S. 74½° W.,
64 lks. dist., mkd. T5S R41E S36 BT.

N. 0° 18' 00" W., on the E. bdy. of sec. 25.

Descend gradually over W. slope through moderate timber and light
undergrowth.

1.980

From this point, the original closing cor. of secs. 30 and 31, T.
5 S., R. 42 E., bears East, 0.053 chs. dist., determined at record
bearing and distance from the remains of the original bearing
trees:

A larch, 13 ins. diam., bears N. 67° E., 31 lks. dist.,
with scribe marks 30 legible on opened blaze.

A root wad, bears S. 56° E., 48 lks. dist., with larch
log alongside, 10 ins. diam., with fragmentary scribe
marks legible on partially healed, rotting blaze.

At the corner point

Set a stainless steel post, 28 ins. long, 2½ ins. diam., 22 ins.
in the ground, with brass cap mkd.

T 5 S	T 5 S	
R 41 E	S 30	CC
S 25	S 31	
	R 42 E	
		1991

from which a new bearing tree

A larch, 22 ins. diam., bears S. 37° E., 61 lks. dist.,
mkd. T5S R42E S31 CC BT.

Deposit a white "DEEP-1" magnetic marker at the base and set a 6
ft. steel fence post alongside the stainless steel post.

39.00

Descend steep NE. slope.

39.970

The ¼ sec. cor. of sec. 25 only, monumented with the original
basalt stone, 17 x 13 x 5 ins. (record, 15 x 13 x 5 ins.), firmly
set, projecting 3 ins. above ground, with no clear marks.

At the corner point

Set a stainless steel post, 28 ins. long, 2½ ins. diam., 22 ins.
in the ground, and in a collar of stone, with brass cap mkd.

UNION COUNTY
SURVEYOR

Date Received

3/5/13

Date Filed

3/5/13

By

R. L. G. M.

No. No.

183-2013R