

CERTIFIED RECORD OF LAND CORNER MONUMENTATION

INDEX NO. P-15

History of original corner establishment:

None. Corner established this survey.

DIAGRAM
T5S R41E



Description of Corner Evidence Found:

None. Corner established this survey.

Description of monument and accessories I established to perpetuate the original location of this corner:

Set 2" O.D. x 30" galvanized iron pipe 15" in ground with 2" aluminum cap, with magnet and flared ends, stamped as shown on the DIAGRAM, in a mound of stone with 3 ft. base. Corner falls in swamp area, bed rock 15" below surface.

From Which:

A 5/8" rebar, 29" into ground with 2" aluminum cap bears N56°38'27"E, 50.39 ft., stamped: C 1/4 S22 RM 50.4 ft.

An Aspen, 15" dia., base bears S66°25'W, 28.9 ft., scribed: C 1/4 S22 BT

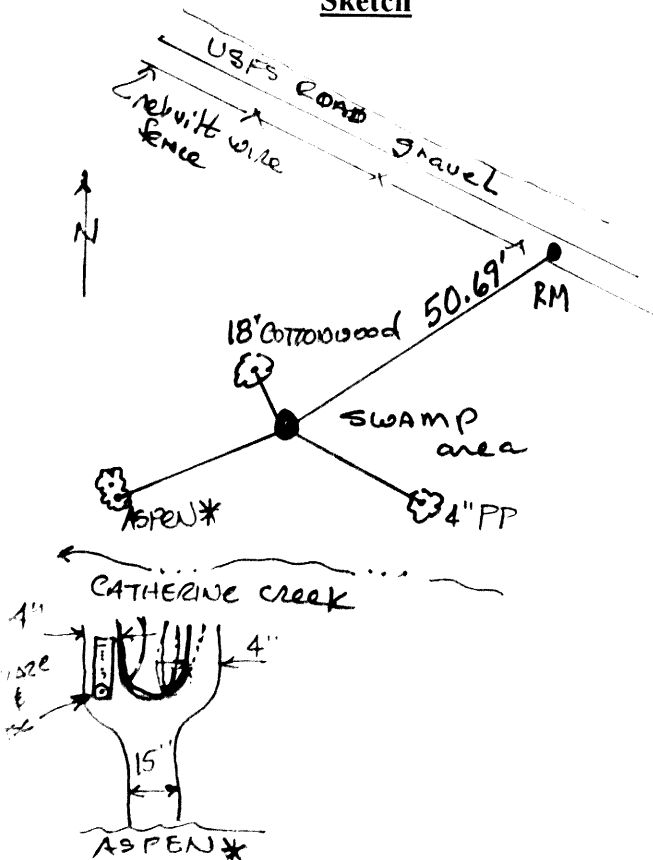
A Cottonwood, 18" dia., bears N21°42'W, 11.6 ft., scribed: C 1/4 S22 BT

A Ponderosa Pine, 4" dia., bears S61°55'E, 24.9 ft., scribed: X BT

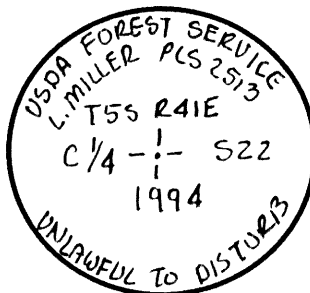
Measurements to BT's taken with total station and chain with bearings based on the survey control network; bearings taken to aluminum nail with a 1/2" brass disc at base of blaze stamped: "L. MILLER PLS 2513". Nailed Bearing Tree (54-3) signs above blaze and Land Survey Monument (54-9) signs on back of each tree as required. Wired 54-3 & 54-9 signs to steel fence post southerly of RM. Set steel fence post with Land Survey Monument (54-9) sign alongside monument.

This monumentation was performed by:
Linda Lee Miller, PLS 2513
July 31, 1994

Sketch



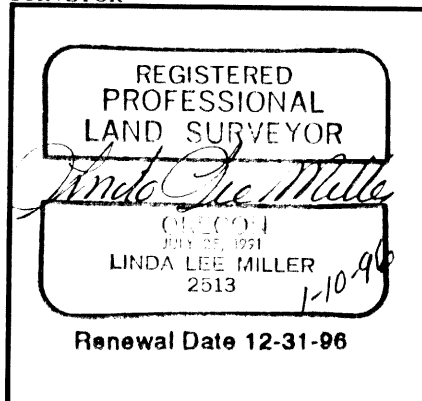
Monument Detail



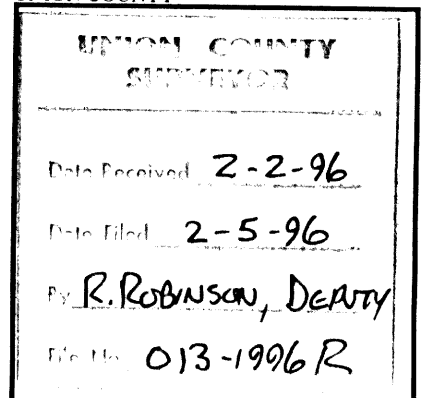
Location/Comments

Mean Magnetic Declination 20° East

SURVEYOR



UNION COUNTY



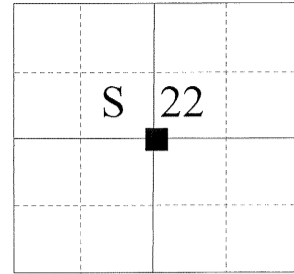
CERTIFIED RECORD OF LAND CORNER MONUMENTATION

HISTORY OF ORIGINAL CORNER ESTABLISHMENT:

Corner originally established by Linda Lee Miller in Survey 006-1996. Monumentation record states:

Set 2" O.D. x 30" Aluminum pipe 15" in ground with 2" aluminum cap, with magnet and flared ends, stamped as shown. In a mound of stone 3 ft. base Corner falls in swamp area, bed rock 15" below surface. From which:
A 5/8" rebar 29" into ground with 2" aluminum cap bears N56°38'27"E, 50.39 ft. stamped C1/4 S22 RM 50.4 ft.
An Aspen, 15" dia., base bears S66°25'W, 28.9 ft., scribed C1/4 S22 BT. A Cottonwood, 18" dia., bears N21°42'W, 11.6 ft., scribed C 1/4 S22 BT.
A Ponderosa Pine, 4" dia., bears S61°55'E, 24.9 ft., scribed X BT.

T 5S R 41 E P-15



DESCRIPTION OF CORNER EVIDENCE FOUND:

Found 2" Aluminum pipe with 2" cap. Found accessories as detailed above. The Aspen has rotted and fallen down. Minor Partition Plat 20100001T calls finding the monument 134.53 ft. North and 65.51 feet West of the True Center 1/4 corner position. I contacted Ms. Miller in 2010 concerning this discrepancy and she had no interest in correcting the erroneous monument. The Union County Surveyor was contacted by a private landowner in the area and it was agreed that the corner would be monumented in the correct location by the Union County Surveyor.

See Union County Survey Number 029-2012

DESCRIPTION OF MONUMENT AND ACCESSORIES I ESTABLISHED

TO PERPETUATE THE ORIGINAL LOCATION OF THIS CORNER:

At position determined by survey, I set a 2 1/2"x30" Aluminum monument with aluminum cap marked as shown, 28 ins. in the ground, from which:

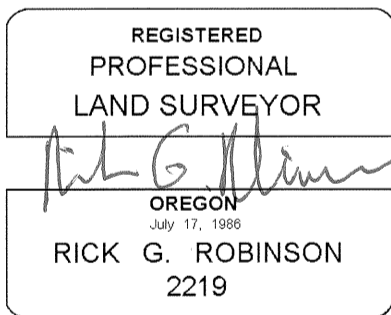
The original Aluminum pipe monument set by Miller falls 134.53 ft. North and 65.51 feet West of the True Center 1/4 corner position. I stamp 'AM' on the cap and removed the signage on the bearing trees.

NEW BEARING TREES (Bearings and distances are from the TRUE Corner Position):

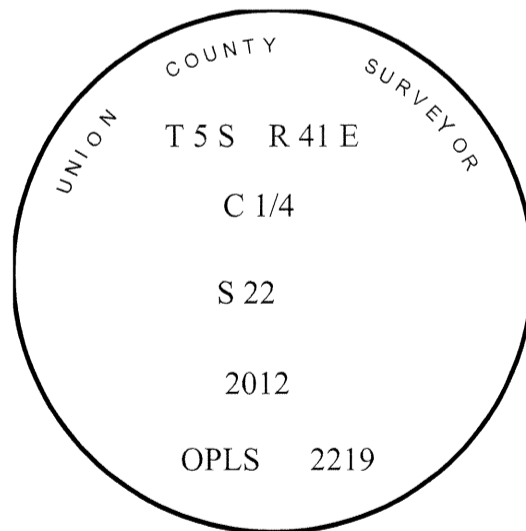
- A 20 inch diameter Ponderosa Pine bears North 66° East, a distance of 40.05 feet, marked C1/4 S22 BT
 - A 26 inch diameter Ponderosa Pine bears South 72° East, a distance of 19.35 feet, marked C1/4 S22 BT
 - A 6 inch diameter White Fir bears South 64° West, a distance of 46.05 feet, marked X BT
 - A 5 inch diameter Ponderosa Pine bears North 51° West, a distance of 46.00 feet, marked X BT
- Raised a mound of stone 2 ft. base to top of cap
Set steel fence post approximately 1 ft. North of Monument

I hereby certify that the corner was monumented on August 14, 2012.

Witness: Jeff Hsu.



Renewal Date: December 31, 2012



UNION COUNTY SURVEYOR

Date Received 8/17/2012

Date Filed 8/20/2012

Filed By [Signature]

File Number 025-2012R

I used a steel tape and magnetic compass in the establishment of the accessories. I used 16° East declination, the distances are to a 60d spike driven into the root crown at the right side of the bearing trees.