

486

Dependent Resurvey of a Portion of the Subdivisional Lines,
T. 5 S., R. 41 E., Willamette Meridian, Oregon

CHAINS

T 5 S R 41 E

S 30		S 29
1992		

from which

A ponderosa pine, 12 ins. diam., bears N. $20\frac{1}{2}^\circ$ E.,
46 lks. dist., mkd. $\frac{1}{4}$ S29 BT.

A Douglas fir, 22 ins. diam., bears S. $18\frac{1}{2}^\circ$ W.,
81 lks. dist., mkd. $\frac{1}{4}$ S30 BT.

Deposit a white "DEEP-1" magnetic marker at the base of the
stainless steel post.

From this point, the corner of wire fences, extending E., W., and
S., bears S. $5\frac{1}{2}^\circ$ W., 0.670 chs. dist.

Descend N. slope through moderate timber and light undergrowth.

54.00 Spur, slopes NW.; desc. steep N. slope.

68.00 Slope changes to W. slope.

80.110 Point for the cor. of secs. 19, 20, 29, and 30, at proportionate
distance; there is no remaining evidence of the original corner.

Set a stainless steel post, 28 ins. long, $2\frac{1}{2}$ ins. diam., 24 ins.
in the ground, and in a collar of stone, with brass cap mkd.

T 5 S R 41 E			
S 19		S 20	
S 30		S 29	
1992			

from which

A fir, 17 ins. diam., bears N. 50° E., 36 lks. dist.,
mkd. T5S R41E S20 BT.

A fir, 27 ins. diam., bears S. 39° E., 82 lks. dist.,
mkd. T5S R41E S29 BT.

A Douglas fir, 12 ins. diam., bears S. $62\frac{1}{2}^\circ$ W., 46 lks.
dist., mkd. T5S R41E S30 BT.

A ponderosa pine, 15 ins. diam., bears N. 39° W., 73 lks.
dist., mkd. T5S R41E S19 BT.

Deposit a white "DEEP-1" magnetic marker at the base of the
stainless steel post.

From this point, the $\frac{1}{4}$ sec. cor. of secs. 19 and 20, bears
N. $1^\circ 16' 30''$ W., 40.065 chs. dist., monumented with the original
basalt stone, 11 x 11 x 7 ins., firmly set in an embedded collar
of stone, with illegible chisel marks on the E. face.

At the corner point

UNION COUNTY
SURVEYOR

Date Received

3/5/13

Date Filed

3/5/13

By

M. E. Allen

File No.

090-2013R

487

Dependent Resurvey of a Portion of the Subdivisional Lines,
T. 5 S., R. 41 E., Willamette Meridian, Oregon

CHAINS	<p>Set a stainless steel post, 28 ins. long, 2½ ins. diam., 22 ins. in the ground, and in a collar of stone, with brass cap mkd.</p> <p style="text-align: center;">T 5 S R 41 E S 19 S 20 1991</p> <p>from which new bearing trees</p> <p style="padding-left: 40px;">A larch, 12 ins. diam., bears N. 11½° E., 60 lks. dist., mkd. ¼ S20 BT.</p> <p style="padding-left: 40px;">A ponderosa pine, 18 ins. diam., bears N. 42° W., 9 lks. dist., mkd. ¼ S19 BT.</p> <p>Deposit a white "DEEP-1" magnetic marker at the base and the corner stone alongside the stainless steel post.</p> <p>The corner is located at the top of a steep SE. slope.</p>
33.00 40.030	<p>From the cor. of secs. 20, 21, 28, and 29.</p> <p>S. 89° 12' 00" W., bet. secs. 20 and 29.</p> <p>Descend W. slope along wire fence.</p> <p>Stream, 5 lks. wide, course N.; asc. gradual E. slope.</p> <p>Point for the ¼ sec. cor. of secs. 20 and 29, at proportionate distance; there is no remaining evidence of the original corner.</p> <p>Set a stainless steel post, 28 ins. long, 2½ ins. diam., 22 ins. in the ground, and in a collar of stone, with brass cap mkd.</p> <p style="text-align: center;">T 5 S R 41 E S 20 ¼ S 29 1992</p>
54.00	<p>from which</p> <p style="padding-left: 40px;">A lodgepole pine, 22 ins. diam., bears N. 59½° E., 118 lks. dist., mkd. ¼ S20 BT.</p> <p style="padding-left: 40px;">A lodgepole pine, 25 ins. diam., bears S. 59° E., 70 lks. dist., mkd. ¼ S29 BT.</p> <p>Deposit a white "DEEP-1" magnetic marker at the base of the stainless steel post.</p> <p>The corner is located on a gradual S. slope in the S. edge of a clearing.</p> <p>Continue over rolling land, through logging operation.</p> <p>Meandering stream, 4 lks. wide, course N.; asc. E. slope.</p>

UNION COUNTY
SURVEYOR

Date Received 3/5/13

Date Filed 3/5/13

By [Signature]

File No. 090-2013R

CERTIFIED RECORD OF LAND CORNER MONUMENTATION

HISTORY OF ORIGINAL CORNER ESTABLISHED:

Original corner set by H. M. Thatcher, under GLO contract No. 320, dated April 1, 1879. Surveyor General Record States:

Set Stone 11x11x7 for 1/4 sec. cor. Raised Stone Mound at cor.

Corner brought to county standard by Philip G. Griffin in 1991, under BLM Special Instructions dated June 29, 1990 and May 15, 1991. Field notes state: Found the original basalt stone, 11x11x7 ins., firmly set in an embedded collar of stone, with illegible chisel marks on the E. face.

At the corner point:

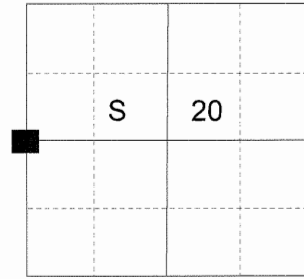
Set a stainless steel post, 28 ins. long, 2 1/2 ins. diam., 22 ins. in the ground, and in a collar of stone, with brass cap mkd. as shown

From which:

A larch, 12 ins. diam., bears N11 1/2°E, 60 lks. dist., marked 1/4 S20 BT.
A ponderosa pine, 18 ins. diam., bears N42°W, 9 lks. dist., marked 1/4 S19 BT.

Deposited a white "DEEP-1" magnetic marker at the base and the corner stone alongside the stainless steel post.

T 5 S R 41 E P-05



DESCRIPTION OF CORNER EVIDENCE FOUND:

Found a 2 1/2" iron pipe with 3" BLM brass cap marked as shown below, 3" below ground,

From which:

A larch stump, 13 ins. diam., bears N12°E, 39.7 ft. dist., partially decayed
A ponderosa pine, 29 ins. diam., bears N42°W, 5.6 ft. dist., alive and vigorous with healed blaze.

The corner is located at the top of a steep SE. slope.

DESCRIPTION OF MONUMENT AND ACCESSORIES I ESTABLISHED

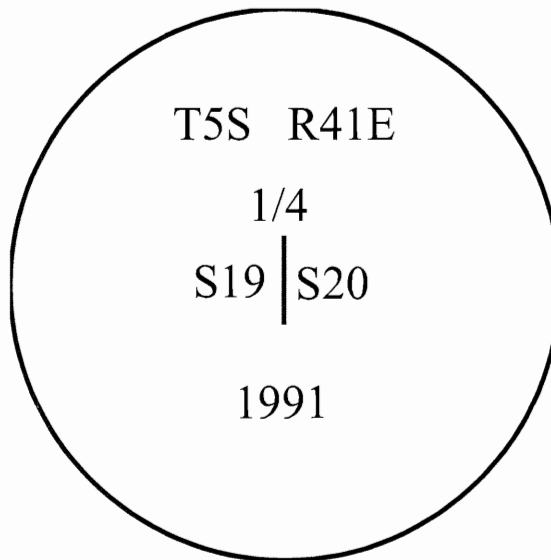
TO PERPETUATE THE ORIGINAL LOCATION OF THIS CORNER:

From the brass cap monument:

New Bearing trees:

A 5" Douglas fir bears North 58° East a dist. of 34.30 ft. marked 1/4S20 BT
A 4" Douglas fir bears South 52° East a dist. of 26.60 ft. marked X BT
A 5" Ponderosa pine bears South 33° West a dist. of 81.95 ft. marked 1/4S19 BT

I hereby certify that the corner was perpetuated October 9, 2017.
Witness: Kyle Tucker



REGISTERED
PROFESSIONAL
LAND SURVEYOR

OREGON
June 2, 2010
JEFFREY S. HSU
83571

Renewal Date: June 30, 2019

UNION COUNTY
SURVEYOR
Date Received 10/24/17
Date Filed 10/24/17
Filed By [Signature]
File Number 037-2017R

I used a steel tape and magnetic compass in the establishment of the bearing trees. Magnetic declination used was 13° East. Bearing is to a brass washer marked OPLS 83571 in the lower blaze of the tree. Distance is to a spike set in the root crown of the side of the tree.

HORIZONTAL CONTROL DATA

UNION COUNTY, OREGON

OREGON STATE PLANE, NORTH ZONE (3601)

STA NAME: 2017020

1/4 SECTION CORNER COMMON TO SECTIONS 19 AND 20

TWP. 5 S. RGE. 41 E.

GEODETIC COORD: NAD 83(91)

DATE TIED: October 9, 2017

LAT: 45 ° 6 ' 56.38438 " N

SURVEYOR: RICK G. ROBINSON
OPLS 2219

LONG: 117 ° 43 ' 27.59555 " W

FIRM: BAGETT, GRIFFITH, & BLACKMAN
2006 ADAMS AVENUE
LAGRANDE, OR 97850
(541) 963-6092

SP. COOR: NAD 83(91)

N: 540568.638 INT FT.

E: 8918457.934 INT FT.

TYPE: GPS

THETA: 1 ° 58 ' 6.47351009 "

ORDER: SECOND CLASS: 1

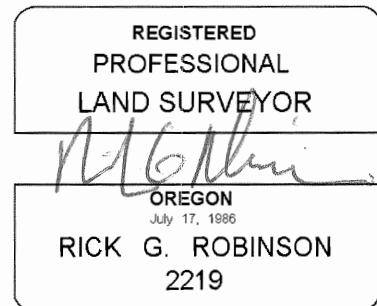
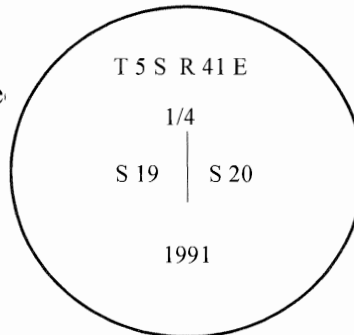
SCALE FACTOR: 0.9998950098

ELEV: 4062.55 US FT.

ELEV: DATUM: NGVD 29

COMMENTS:

BLM Brass Capped monument with cap marked as shown, set in mound of stone.



Renewal Date: December 31, 2018

1 METER = 3.280833333... US FEET = 39.37 INCHES

1 METER = 3.280839895 INT'L FEET OR 1 INCH = 2.54 CM

TO CALCULATE ELEVATION FACTOR (IN THE NORTH AMERICAN CONTINENT)

DIVIDE 20,906,000 BY (20,906,000 + ELLIPSOID ELEV. IN FEET)