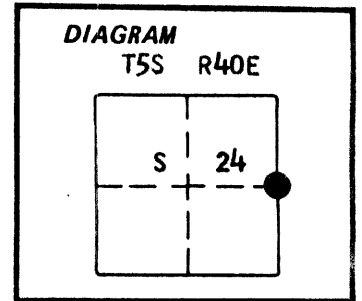


CERTIFIED RECORD OF LAND CORNER MONUMENTATION

History of original corner establishment:
Corner originally established by Henry M. Thatcher under GLO contract number 320 dated April 1, 1879. Surveyor General record states:

Set stone 13x13x13 for 1/4 sec cor
Raised stone mound at cor



No record of subsequent remonumentation found
Description of corner evidence found:

Found a stone 15x12x10 inches marked with a faint 1/4 in small mound of stone

UNION COUNTY SURVEYOR

Date Received 6-5-86
Date Filed 6-18-86
By G. LANGLITZ, DEPUTY
File No. 64-86 R

See map of survey dated June, 1986

Description of monument and accessories I established to perpetuate the original location of this corner: In place of stone, I set a 2 1/2'x30" aluminum pipe with aluminum cap marked as shown 26 inches in the ground with mound of stone 4 ft. base to top of cap from which:

New BTs

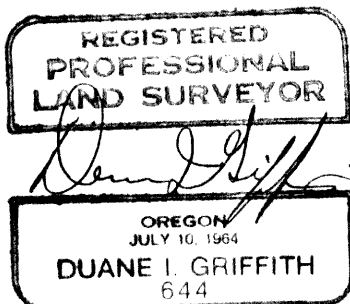
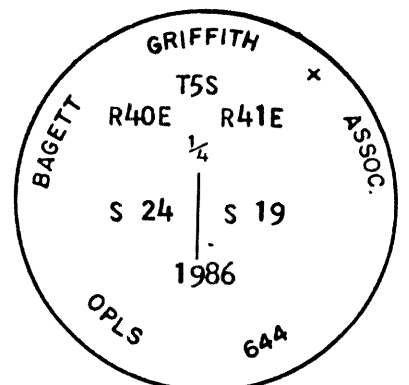
A 16 inch diameter P.Pine bears S8°E 65.39 feet marked 1/4 S19 BT
A 15 inch diameter P.Pine bears N47°W 86.92 feet marked 1/4 S24 BT

Buried the original corner stone North and alongside of monument

Set steel fencepost approximately 5 feet South with 54-4 sign

Corner remonumented May 13, 1986

Witnesses: Greg Blackman and Rick Robinson



Brass washer marked OPLS 644 nailed to BT blaze. Used steel tape and magnetic compass with 20° East declination. Distances to the BTs are to a 50d spike set in right side of tree when facing tree, unless otherwise stated.

Office of..... County of.....
State of....., I hereby certify that the within instrument was filed in this office for record on the..... day of....., 19.....
..... by

(COUNTY OFFICIAL)

(DEPUTY)

Dependent Resurvey of a Portion of the West Boundary,
T. 5 S., R. 41 E., Willamette Meridian, Oregon

CHAINS	
	<p>from which</p> <p>A ponderosa pine, 12 ins. diam., bears S. 28° E., 52 lks. dist., mkd. S 1/16 S19 BT.</p> <p>A ponderosa pine, 12 ins. diam., bears N. 7½° W., 40 lks. dist., mkd. S 1/16 S24 BT.</p> <p>Deposit a white "DEEP-1" magnetic marker at the base and set a steel fence post alongside the stainless steel post.</p> <p>The corner is located 15 lks. E. of a barbed wire fence, extending N. and S.</p>
27.00	Top of ascent: along E. slope.
40.200	<p>The ¼ sec. cor. of secs. 19 and 24, perpetuated from the original corner stone, no longer visible, and recorded by Duane I. Griffith, Registered Land Surveyor No. 644, in 1986, recorded under file No. 64-86R, monumented with an aluminum post, 2½ ins. diam., firmly set with top flush with the ground, and in a collar of stone, 2½ ft. base, to top, with aluminum cap mkd.</p> <p style="text-align: center;">BAGETT GRIFFITH ASSOC T 5 S R 40 E ¼ R 41 E S 24 S 19 1986 OPLS 644</p> <p>from which bearing trees mkd. by Griffith</p> <p>A ponderosa pine, 18 ins. diam., bears S. 10° E., 99 lks dist., with fragmentary scribe marks on partially healed double blaze.</p> <p>A ponderosa pine, 18 ins. diam., bears N. 49° W., 131½ lks. dist., with fragmentary scribe marks on partially healed double blaze.</p> <p>A steel fence post is set alongside the aluminum post.</p> <p>The corner is located at the top of a steep NE. slope 60 lks. E. of a barbed wire fence, extending N. and S.</p>
	<p>From the ¼ sec. cor. of secs. 13 and 18 perpetuated and recorded by Duane I. Griffith, Registered Land Surveyor No. 644, in 1986, recorded under file No. 76-86R, monumented with an aluminum post, 2½ ins. diam., firmly set in a collar of stone, with top flush with the ground, with aluminum cap mkd.</p> <p style="text-align: center;">BAGETT GRIFFITH ASSOC T 5 S R 40 E ¼ R 41 E S 13 S 18 1986 OPLS 644</p> <p>from which bearing trees mkd. by Griffith</p>

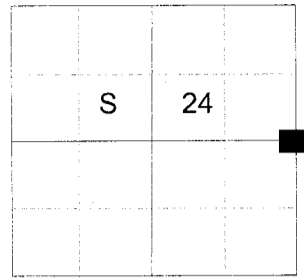
UNION COUNTY SURVEYOR	
Date Received	3/5/13
Date Filed	3/5/13
By	<i>RL Griffith</i>
File No.	089-2013R

CERTIFIED RECORD OF LAND CORNER MONUMENTATION

HISTORY OF ORIGINAL CORNER ESTABLISHED:

Corner originally established by Henry Thatcher under GLO contract number 320 dated April 1, 1879. Surveyor General field notes state:
Set stone 13 x 13 x 13 for 1/4 Sec. Cor.
Raised stone mound at cor.

T 5 S R 40 E P-25



In 1986 Duane Griffith found the stone monument. Union County Monumentation Record 64-86R states:
Found a stone 15 x 12 x 10 inches marked with a faint 1/4 in small mound of stone. In place of stone I set a 2 1/2" x 30" aluminum pipe with aluminum cap marked as shown, 26 inches in the ground with mound of stone 4 ft. base to top of cap from which:
A 16 inch diameter P. Pine bears S8°E 65.39 feet marked 1/4 S19 BT.
A 15 inch diameter P. Pine bears N47°W 86.92 feet marked 1/4 S24 BT.
Buried stone alongside and North of monument.
Set steel fence post approx. 5 feet South.

DESCRIPTION OF CORNER EVIDENCE FOUND:

Found a 2 1/2" aluminum pipe with aluminum cap marked as shown below, 4" above ground with mound of stone 4 ft. base to top of cap from which:
A 23" diam. Ponderosa Pine bears South 8° East, a dist. of 65.39 feet, alive and vigorous with healed blaze.
A 19" diam. Ponderosa Pine bears North 47° West, a dist. of 86.92 feet, alive and vigorous with healed blaze.

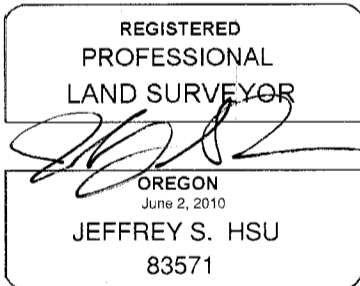
DESCRIPTION OF MONUMENT AND ACCESSORIES I ESTABLISHED TO PERPETUATE THE ORIGINAL LOCATION OF THIS CORNER:

From the aluminum pipe monument:

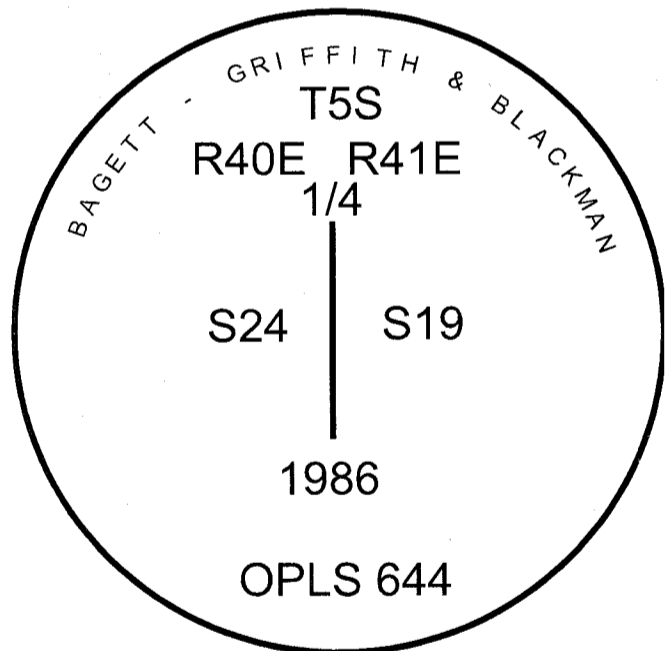
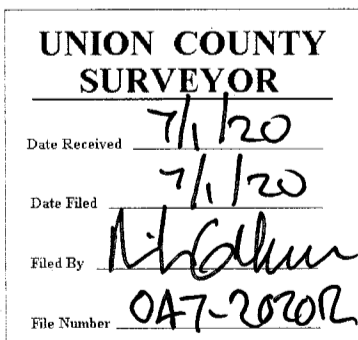
NEW BEARING OBJECTS:

A 3" Douglas Fir bears North 33° East a dist. of 17.20 ft., marked X BT.
A 21" Douglas Fir bears South 82° West a dist. of 10.43 ft., marked 1/4 S24 BT.

I hereby certify that the corner was perpetuated on May 28, 2020.
Witness: Kyle A. Tucker



Renewal Date: June 30, 2021



I used a steel tape and magnetic compass in the establishment of the new accessories. I used 14° East declination, the distances are to a 60d spike driven into the right side of the root crown of the bearing trees. A brass washer marked OPLS 83571 is attached to the BT blaze of the new bearing trees.