

Ref: 16-75-11-75

4-5

NPW .orm 76  
Jun 1949

# CADASTRAL RETRACEMENT RECORD

Index

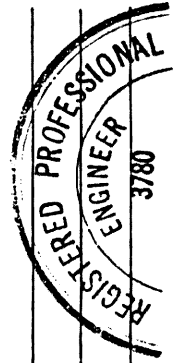
Corner Section Corner common to Sec. 7, 8, 17 & 18 Twp. 5S R. 41E W.M.

From original G. L. O. field notes, dated 7-20-1879 EVIDENCE FOUND: 4-21-75, 19 75

Corner Set stone 18 x 10 x 4 for cor. to sections 7, 8, 17 & 18 1" pipe with brass screw & washer, stamped CX-13, 1973 & rock mound around pipe

Witness \_\_\_\_\_

Marks Raised mound of stone of Cor. \_\_\_\_\_



From re-establishment field notes, dated \_\_\_\_\_

Corner \_\_\_\_\_

Witness \_\_\_\_\_

Marks \_\_\_\_\_

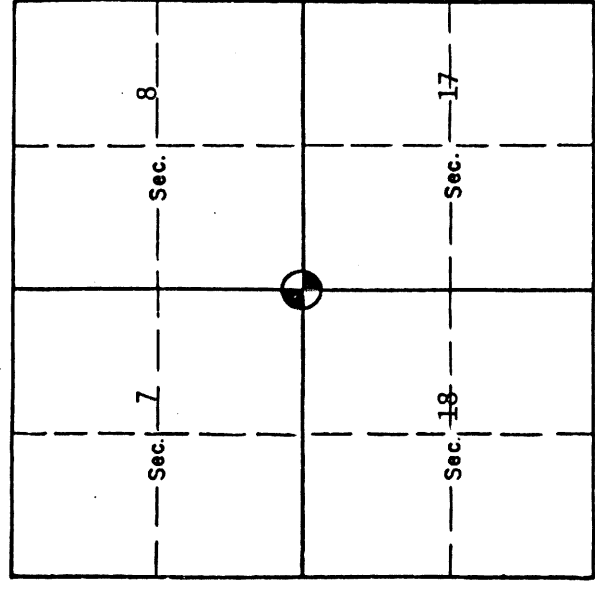
EVIDENCE FOUND: \_\_\_\_\_, 19 \_\_\_\_\_

Date Received \_\_\_\_\_

Date Filed \_\_\_\_\_

By \_\_\_\_\_

File No. 724-84R



RETRACEMENT NOTES: replaced pipe, screw and washer with brass cap set in concrete monument. Set steel fence post along side corner.

Blazed and scribed bearing trees.

13" Ponderosa pine, bears S 63°W, 8.40 feet.

9" Ponderosa pine, bears N. 45°W, 15.30 feet.

9" Ponderosa pine, bears N. 49°E. 40.85 feet.

13" Ponderosa pine, bears S 32° E 25.80 feet.

Oregon License No. 3780

June 10, 1975

Date

Signature *William W. Briggs*

William W. Briggs, P.E. - Senior Vice President

J-U-B ENGINEERS, Inc.

15-1-4

488

Dependent Resurvey of a Portion of the Subdivisional Lines,  
T. 5 S., R. 41 E., Willamette Meridian, Oregon

CHAINS	
67.50	Top of ascent; desc. gradual W. slope.
80.060	The cor. of secs. 19, 20, 29, and 30.
	S. 89° 38' 00" W., bet. secs. 19 and 30.
	Descend over gradual W. slope, through medium timber and light undergrowth to Milk Creek; thence asc. E. slope.
40.085	Point for the ¼ sec. cor. of secs. 19 and 30, at proportionate distance; there is no remaining evidence of the original corner.
	Set a stainless steel post, 28 ins. long, 2½ ins. diam., 24 ins. in the ground, and in a collar of stone, with brass cap mkd.
	T 5 S R 41 E S 19 ¼ S 30 1992
	from which
	A fir, 24 ins. diam., bears N. 10° E., 119 lks. dist., mkd. ¼ S19 BT.
	A fir, 27 ins. diam., bears S. 56° E., 14 lks. dist., mkd. ¼ S30 BT.
	Deposit a white "DEEP-1" magnetic marker at the base of the stainless steel post.
	Ascend over NE. slope.
78.50	Track road, 15 lks. wide, bears NE. and SW.
79.65	Abandoned dirt road, 20 lks. wide, bears N. and S.; asc. E. slope.
80.30	Barbed wire fence, extends N. and S.
80.720	The cor. of secs. 19, 24, 25, and 30 on the W. bdy. of the Tp.

<b>UNION COUNTY SURVEYOR</b>	
Date Received	3/5/13
Date Filed	3/5/13
By	<i>M. L. Gillman</i>
File No.	063-2013R

From the cor. of secs. 7, 8, 17, and 18, perpetuated and recorded by William W. Briggs, Registered Professional Engineer No. 3780, in 1975, recorded under file No. 724-84R, monumented with a brass cap, 3 ins. diam., firmly set in concrete flush with the ground surface, in a collar of stone, with top mkd.

T 5 S R 41 E  
 S 7 | S 8  
 S 18 | S 17  
 1975  
 SET BY WWB RPE NO 3780

from which the remains of the original bearing trees

A rotten pine stump, size indeterminate, bears N. 28° E., 93 lks. dist., no marks.

Dependent Resurvey of a Portion of the Subdivisional Lines,  
T. 5 S., R. 41 E., Willamette Meridian, Oregon

CHAINS

A root hole, bears S. 25° E., 15 lks. dist.

A root hole, bears S. 77° W., 25 lks. dist.

and the remains of bearing trees mkd. by Briggs

The rotten remains of a pine stump, size indeterminate,  
bear N. 49° E., 62 lks. dist., no marks.

A ponderosa pine, 18 ins. diam., bears S. 34¼° E.,  
39 lks. dist., with pitched over blaze.

A ponderosa pine, 15 ins. diam., bears S. 63° W.,  
12 lks. dist., with scribe marks OS visible on  
open, upper blaze and axe marks on open, lower blaze.

A ponderosa pine, 12 ins. diam., bears N. 45° W.,  
23 lks. dist., with pitched over blaze.

and a bearing tree not of record

A ponderosa pine, 14 ins. diam., bears N. 15½° W.,  
17 lks. dist., no marks visible on partially opened blaze.

and a new bearing tree

A ponderosa pine, 12 ins. diam., bears N. 56° E.,  
69 lks. dist., mkd. T5S R41E S8 BT.

From this point, the ¼ sec. cor. of secs. 8 and 17, bears  
N. 89° 54' 00" E., 39.930 chs. dist, hereinbefore described.

N. 89° 24' 30" W., bet. secs. 7 and 18.

Ascend over gradual E. slope, through medium pine timber and  
grass.

11.50 Slope changes to SE.

40.095 Point for the ¼ sec. cor. of secs. 7 and 18, at proportionate  
distance; there is no remaining evidence of the original corner.

Set a stainless steel post, 28 ins. long, 2½ ins. diam., 22 ins.  
in the ground, with brass cap mkd.

T 5 S R 41 E  
S 7  
¼  
S 18  
1990

from which

A ponderosa pine, 25 ins. diam., bears S. 78° W.,  
45 lks. dist., mkd. ¼ S18 BT.

A ponderosa pine, 16 ins. diam., bears N. 19½° W.,  
41 lks. dist., mkd. ¼ S7 BT.

<b>UNION COUNTY SURVEYOR</b>	
Date Received	3/5/13
Date Filed	3/5/13
<i>[Signature]</i>	
File No. 063-2013R	

# HORIZONTAL CONTROL DATA

## UNION COUNTY, OREGON

### OREGON STATE PLANE, NORTH ZONE (3601)

STA NAME: 2018024

SECTION CORNER COMMON TO SECTIONS 7, 8, 17 AND 18

TWP. 5 S RGE. 41 E.

GEODETIC COORD: NAD 83(91)

DATE TIED: March 29, 2018

LAT: 45 ° 8 ' 14.65656 " N

SURVEYOR: RICK G. ROBINSON  
OPLS 2219

LONG: 117 ° 43 ' 27.40448 " W

FIRM: BAGETT, GRIFFITH, & BLACKMAN  
2006 ADAMS AVENUE  
LAGRANDE, OR 97850  
(541) 963-6092

SP. COOR: NAD 83(91)

N: 548491.128 INT FT.

E: 8918199.344 INT FT.

TYPE: GPS

THETA: 1 ° 58 ' 6.609015 "

ORDER: SECOND CLASS: 1

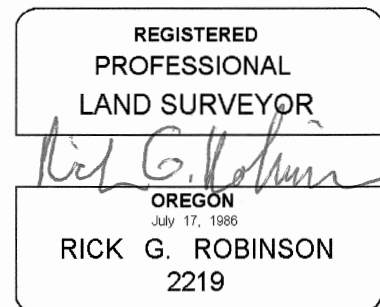
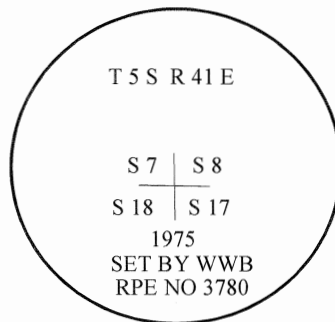
SCALE FACTOR: 0.9998947315

ELEV: 3372.47 US FT.

ELEV: DATUM: NGVD 29

#### COMMENTS:

2 1/2" brass cap monument set in concrete,  
with cap marked as shown.



Renewal Date: December 31, 2018

1 METER = 3.2808333333... US FEET = 39.37 INCHES

1 METER = 3.280839895 INT'L FEET OR 1 INCH = 2.54 CM

TO CALCULATE ELEVATION FACTOR ( IN THE NORTH AMERICAN CONTINENT)

DIVIDE 20,906,000 BY (20,906,000 + ELLIPSOID ELEV. IN FEET)