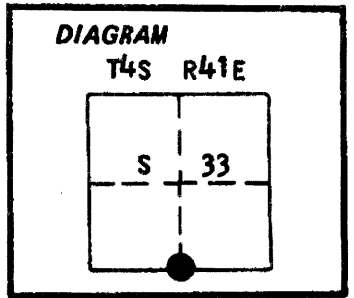


CERTIFIED RECORD OF LAND CORNER MONUMENTATION

History of original corner establishment:  
Corner originally established by Henry M. Thatcher under GLO contract number 320 dated April 1, 1879. Surveyor General record states:

Set stone 25x11x3 for 1/4 sec cor  
Raised stone mound at cor



No record of subsequent monumentation found in county records

Description of corner evidence found:

NONE

**UNION COUNTY SURVEYOR**

Date Received 7-28-86  
Date Filed 8-19-86  
By G. LANGRISH, DEPUTY  
File No. 123-86 R

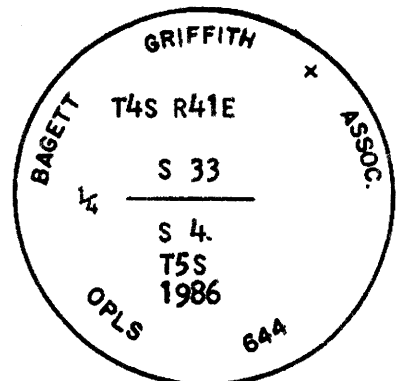
Description of monument and accessories I established to perpetuate the original location of this corner: At proportionate position, I set a 2 1/2"x30" aluminum pipe with aluminum cap marked as shown, 28 inches in the ground with mound of stone 3 ft. base to top of cap from which;

New BTs

A 12 inch diameter Red Fir bears N49°E 15.07 feet marked 1/4 S33 BT  
A 7 inch diameter Tamarack bears S8°W 58.22 feet marked 1/4 S4 BT

Set steel fencepost approximately 5 feet East with 54-4 sign attached

Corner monumented June 26, 1986  
Witness: Rick Robinson



Brass washer marked OPLS 644 nailed to BT blaze. Used steel tape and magnetic compass with 20° East declination. Distances to the BTs are to a 50d spike set in right side of tree when facing tree, unless otherwise stated.

Office of..... County of.....  
State of....., I hereby certify that the within instrument was filed in this office  
for record on the..... day of....., 19.....  
..... by .....

(COUNTY OFFICIAL)

(DEPUTY)

485

Subdivision of Section 3,  
T. 5 S., R. 41 E., Willamette Meridian, Oregon

CHAINS	
31.60	Spur, slopes N.
39.00	Spur, slopes N.; desc. NW. slope.
41.215	The N 1/16 sec. cor. of secs. 3 and 4.
<p>Subdivision of Section 4, T. 5 S., R. 41 E., Willamette Meridian, Oregon</p>	
From the 1/4 sec. cor. of secs. 4 and 9.	
N. 1° 40' 30" W., on the N. and S. center line of sec. 4.	
Descend broken N. slope, through medium timber and undergrowth.	
33.75	Stream, 30 lks. wide, course irregularly S.
34.40	Dirt road, 20 lks. wide, bears N. and S. 30° W.
38.380	Point for the C 1/4 sec. cor. of sec. 4, at intersection with the E. and W. center line.
Set a stainless steel post, 28 ins. long, 2 1/2 ins. diam., 22 ins. in the ground, and in a collar of stone, with brass cap mkd.	
<p>T 5 S R 41 E C 1/4 S 4 1991</p>	
from which	
A spruce, 22 ins. diam., bears N. 53° E., 57 lks. dist., mkd. C 1/4 S4 BT.	
A larch, 15 ins. diam., bears S. 55° W., 16 lks. dist., mkd. C 1/4 S4 BT.	
Deposit a white "DEEP-1" magnetic marker at the base of the stainless steel post.	
The corner is located in the cutbank of an unimproved road, bearing N. and S.	
Ascend over SE. slope.	
74.740	The 1/4 sec. cor. of secs. 4 and 33 on the N. bdy. of the Tp., reestablished by proportionate measurement and recorded by Duane I. Griffith, Registered Land Surveyor No. 644, in 1986, recorded under file No. 123-86R; there is no remaining evidence of the original corner, therefore, this position is accepted as the corner, monumented with an aluminum pipe, 2 1/2 ins. diam., firmly set flush with the ground, and in a mound of stone, 3 ft. base, with aluminum cap mkd.

<b>UNION COUNTY SURVEYOR</b>	
Date Received	3/5/13
Date Filed	3/5/13
By	<i>[Signature]</i>
File No.	021-2013R

Subdivision of Section 4,  
T. 5 S., R. 41 E., Willamette Meridian, Oregon

CHAINS

BAGETT GRIFFITH ASSOC

T 4 S R 41 E

S 33

1/4

S 4

T 5 S

1986

PLS 644

from which bearing trees mkd. by Griffith

A fir, 12 ins. diam., bears N. 46° E., 22 lks. dist.,  
with fragmentary scribe marks on partially healed  
double blaze.

A larch, 9 ins. diam., bears S. 6° W., 89 lks. dist.,  
with healed double blaze.

From this point, the cor. of secs. 3, 4, 33, and 34, bears  
S. 89° 50' 30" E., 38.305 chs. dist., hereinbefore described.

From this same point, the cor. of secs, 4, 5, 32, and 33, bears  
N. 89° 50' 00" W., 38.305 chs. dist., hereinbefore described.

From the 1/4 sec. cor. of secs. 3 and 4.

N. 89° 04' 00" W., on the E. and W. center line of sec. 4.

Descend broken W. slope, through medium timber and undergrowth.

19.780

Point for the center E 1/16 sec. cor. of sec. 4.

Set a stainless steel post, 28 ins. long, 2 1/2 ins. diam., 24 ins.  
in the ground, with brass cap mkd.

E 1/16

C

S 4

1991

from which

A ponderosa pine, 12 ins. diam., bears N. 17° E., 10 lks.  
dist., mkd. CE 1/16 S4 BT.

A ponderosa pine, 15 ins. diam., bears S. 65° W., 24 lks.  
dist., mkd. CE 1/16 S4 BT.

Deposit a white "DEEP-1" magnetic marker at the base of the  
stainless steel post.

The corner is located on a broad spur, sloping S. 65° W.

37.45

Stream, 25 lks. wide, course SW.

39.25

Dirt road, 20 lks. wide, bears N. and S.

39.560

The center 1/4 sec. cor. of sec. 4.

UNION COUNTY  
SURVEYOR

Date Received 3/5/13

Date Filed 3/5/13

By *[Signature]*

File No. 021-2013R

**CERTIFIED RECORD OF LAND CORNER MONUMENTATION**

**HISTORY OF ORIGINAL CORNER ESTABLISHED:**

Corner originally established by Henry Thatcher under GLO contract number 320, dated April 1, 1879. Surveyor General records state:

Set stone 25"x11"x3" for 1/4 sec cor, raised stone mound at cor

Corner re-established by Duane Griffith in Union County Survey 22-86. Union County Monumentation Record 123-86R states:

At proportionate position, I set a 2 1/2" x 30" aluminum pipe with aluminum cap marked as shown, 28 inches in the ground with mound of stone 3 ft. base to top of cap,

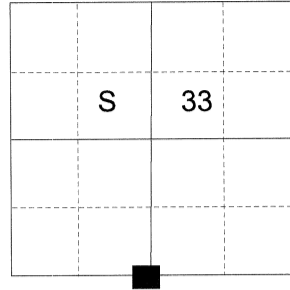
From which:

A 12" diameter Red Fir bears N 49° E, 15.07 feet., marked 1/4 S33 BT.

A 7" diameter Tamarack bears S 8° W, 58.22 feet., marked 1/4 S4 BT.

Set steel fence post approx. 5' East.

T 4 S R 41 E Z-11



**DESCRIPTION OF CORNER EVIDENCE FOUND:**

Found a 2 1/2 in. aluminum pipe, flush with ground, with 2 1/2" aluminum cap marked as shown below, with 3' collar of stone, from which:

A 16" Douglas Fir bears North 46° East, a distance of 15.05 ft., alive and vigorous with scribes visible on partially healed blaze.

A 10" Tamarack bears South 6° West, a distance of 58.20 ft., alive and vigorous with healed blaze.

Steel fence post bears East approx. 5 ft.

**DESCRIPTION OF MONUMENT AND ACCESSORIES I ESTABLISHED TO PERPETUATE THE ORIGINAL LOCATION OF THIS CORNER:**

From the aluminum pipe monument:

**NEW BEARING OBJECTS:**

A 5/8" x 30" iron pin bears South 31° East, a dist. of 12.00 ft., with 1 1/2" aluminum cap marked SE RP.

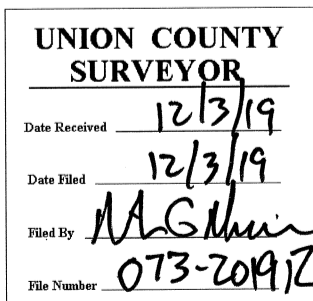
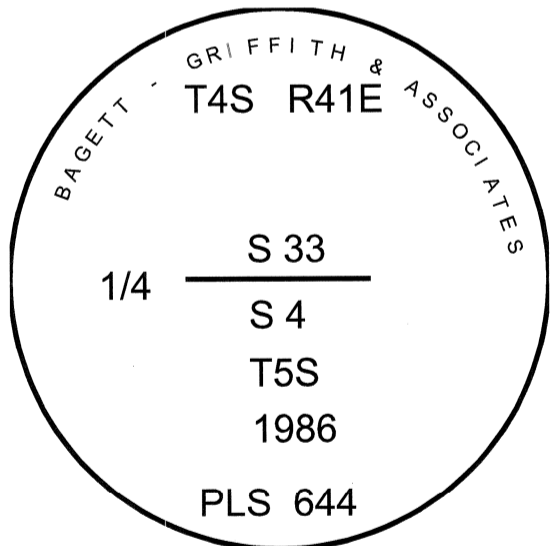
A 5/8" x 30" iron pin bears North 62° West, a dist. of 8.00 ft., with 1 1/2" aluminum cap marked NW RP.

I hereby certify that the corner was perpetuated on November 8, 2019.

Witness: Kyle A. Tucker



Renewal Date: June 30, 2021



I used a steel tape and magnetic compass at 13° East declination in the establishment of the new accessories. Bearings and distances for the iron pins are to the center of the aluminum caps.