

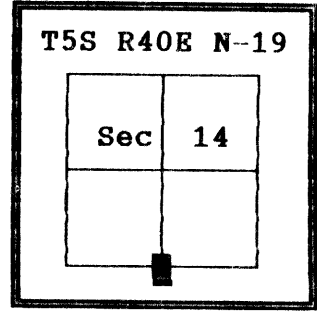
CERTIFIED RECORD OF LAND CORNER MONUMENTATION

HISTORY OF ORIGINAL CORNER ESTABLISHMENT:

Corner originally established by William B Barr under GLO contract Number 443, dated May 29, 1882. Surveyor General record states:

Set lava rock 12x12x6 marked $\frac{1}{4}$ on the north for the $\frac{1}{4}$ corner from which;

A Pine 36 ins diam bears N43°E, 43 lks dist.
A Pine 5 ins diam bears S 6°W 70 lks dist.



DIAGRAM

No record of subsequent monumentation found in Wallowa County survey records
DESCRIPTION OF CORNER EVIDENCE FOUND:

Found stone 12x12x6 inches, with chisel marks, I am unable to read.
The stone was in a rock jack approximately 30' south of corner position.

Found a 36" pine stump N48°E, 28.4 feet, there are no scribes now, there is a Forest Service BT tag, dated 1961 - Forest Service report card states that there were scribes at that time.

Found a 26"± pine stump S16°W, 46.2 feet, the vary bottom of the blaze is visible, no scribes.

DESCRIPTION OF MONUMENT AND ACCESSORIES I ESTABLISHED TO PERPETUATE THE ORIGINAL LOCATION OF THIS CORNER:

At record distances from the original BTs I set a 2½" x 30" aluminum pipe with aluminum cap marked as shown, 22 inches in the ground, from which;

NEW BEARING TREES:

- A 15 inch diameter Douglas Fir bears S 67°E, 25.32 feet marked $\frac{1}{4}$ S23 BT
- A 11 inch diameter White Fir bears N 70°E, 32.57 feet marked $\frac{1}{4}$ S14 BT
- A 19 inch diameter Ponderosa Pine bears S 72°W, 61.88 feet marked $\frac{1}{4}$ S23 BT
- A 23 inch diameter Ponderosa Pine bears N 82°W, 51.27 feet marked $\frac{1}{4}$ S14 BT

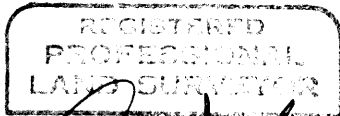
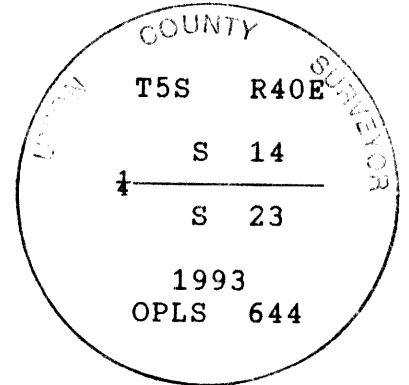
Raised a mound of stone around monument, 4 ft. base to top of cap.

Set a steel fence post approximately 5 feet East with Land Survey Monument sign attached.

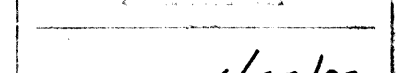
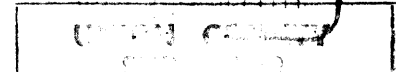
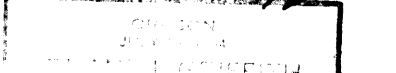
Buried the original corner stone East and alongside of Monument.

I hereby certify that the above corner point was perpetuated as hereon described on October 11, 1993.

I found considerable local magnetic attraction in the area, from 10 to 15 degrees.



[Handwritten Signature]



Received 1/27/93

by 1/13/94

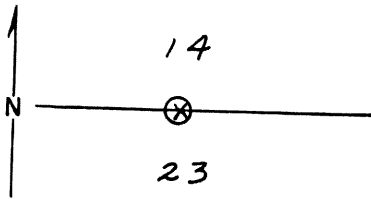
[Handwritten Signature]

FILE 060-1993R

I used a steel tape and magnetic compass in the establishment of new accessories. I used 20° East magnetic declination and the distances are to a 50d spike driven in the right side of the root crown. I attached a brass washer marked OPLS 644 to the BT blaze.

Index File No. N-19 CORNER RECORD (SEARCH) Tract or Survey No. _____ Cor. S. 1/4 COR.
 T 55 R. 40 E R.D. UNION County UNION No. SEC. COR.
 Merid. Will. N.F. W-W State OREGON

CORNER DIAGRAM



DESCRIBE CORNER MONUMENT FOUND

DESCRIBE BEARING TREES OR OTHER OFFICIAL ACCESSORIES FOUND

PP 38" STUMP WITH SCRIBING B.T IN LOWER SCAR S43°W 43 LKS. A MOUND OF STRONG NO MARKINGS.

PHOTO IDENTIFICATION DATA

Photo No. ENW 5-155
 Filed At. 7/19/64
 Object Ident. _____
 Ident. By _____
 Signature _____

DESCRIBE CORNER LOCATION RELATIVE TO NEAR-BY FEATURES, ALSO HOW TO REACH CORNER

PLANE COORDINATE POSITION DATA

State _____ Zone _____
 X _____
 Y _____
 Estab. By _____
 Agency _____

Signature
E.A.H.

Title _____ Division _____ Headquarters _____ Date 10-25-68 7100-52 REV. 65 5

UNION COUNTY SURVEYOR

Date Received _____

Date Filed 12-28-87

By G. LANGUITZ, DEPUTY

File No. 443-87R

N-19