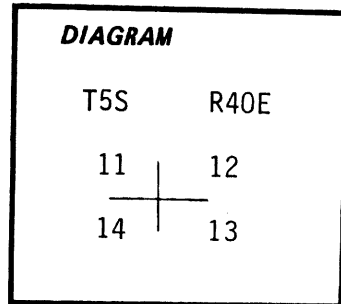


CERTIFIED RECORD OF LAND CORNER MONUMENTATION

History of original corner establishment:

Original survey by W.B. Barr under GLO Contract 443, 1882:  
Planted Basalt Rock 16x14x3 ins., 12 inches in ground on steep hillside facing north marked with 4 notches on the South side and one notch on the East side for corner to Sec. 11,12, 13,14 from which:

- Pine 24" dia. bears N59°E 13 lks. dist. marked T5S R40E S12 BT.
- Fir, 5" dia. bears S50°E 37 lks. dist. marked T5S R40E S13 BT.
- Pine 12" dia. bears S43°W 25 lks. dist. marked T5S R40E S14 BT.
- Pine 20" dia. bears N65°W 90 lks. dist. marked T5S R40E S11 BT.



Description of corner evidence found:

The original corner monument, a basaltstone 16"x12"x3" marked with 4 faint grooves on an edge, lying loose on top of ground.

Remains of original BT's:

- A low-cut 30" dia. Ponderosa Pine stump, no marks visible.
- An 18" dia. Douglas Fir stump with well-healed single blaze visible.
- An 18" dia. Ponderosa Pine, alive and in poor condition with illegible scribing visible on previously opened upper blaze, lower blaze is well-healed.
- A Ponderosa Pine stump, approx. 20" dia. badly decayed, no marks visible.

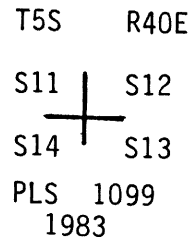
Description of monument and accessories established to perpetuate the original location of this corner:

At the corner position established at the intersection of record distances measured along the slope from the original face of the original BT's, we set a 2"x30" Galvanized Iron Pipe, 24" in the ground on a steep north slope, with brass cap attached marked:

And bury original corner stone alongside iron pipe, from which:

The Original Bearing Trees:

- A 30" dia. Ponderosa Pine stump bears N59°E 9.8 ft. (8.6 ft. on slope to face)
- An 18" Douglas Fir stump bears S45°E 23.6 ft (24.4 on slope to face)
- An 18" Ponderosa Pine bears S47°W 15.7 ft. (16.5 ft. on slope to face)
- And a Decayed Ponderosa Pine stump approx. 20" dia. bears N65°W 58.3 ft. (59.4 ft. slope to face)



We Mark New BT's as Follows:

- An 8" Douglas Fir scribed "T5S R40E S11 BT" on a double blaze bears N52°W 20.5 ft.
- A 6" White Fir scribed "T5S R40E S12 BT" on a double blaze bears N78°E 40.9 ft.
- A 14" Western Larch scribed "T5S R40E S13 BT" on a double blaze bears S77°E 86.6 ft.
- And a 6" Western Larch scribed "T5S R40E S14 BT" on a double blaze bears S68°W 34.7 ft.

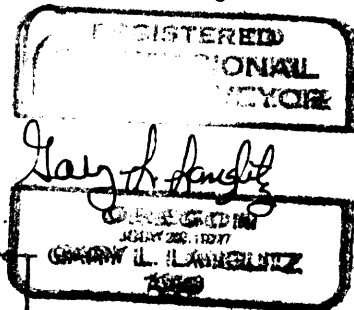
Attached brass washer marked "LS 1099" to lower blaze of new BT's. Horizontal dist. and bearing to BT's measured to center of tree root crown at ground level.

- Magnetic compass (20½° East declination)
- Steel Tape

June 15, 1983

Witnesses: Gary Langlitz  
Dick Humiston  
Jeff Langlitz

Office of..... County of.....  
 State of....., I hereby certify that the within instrument was filed in this office  
 for record on the..... day of....., 19.....  
 \_\_\_\_\_ by \_\_\_\_\_  
 (COUNTY OFFICIAL)



**UNION COUNTY SURVEYOR**  
 (DEPUTY)  
 Received 8-18-83  
 Filed 8-18-83  
 By G. LANGLITZ, DEPUTY  
 File No. 323-83 R

**CERTIFIED RECORD OF LAND CORNER MONUMENTATION**

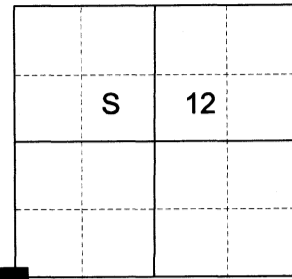
**HISTORY OF ORIGINAL CORNER ESTABLISHED:**

Corner originally established under GLO contract No. 443 executed by W.B. Barr, May 1882. Surveyor General field notes state:

Planted basalt rock 16"x14"x3"., 12" in ground on steep hillside facing North marked with 4 notches on the South side and one notch on the East side for corner to Sec. 11,12,13,14 from which:

- Pine 24" diam. bears North 59° East 13 lks. dist. marked "T5S R40E S12 BT"
- Fir, 5" diam. bears South 50° East 37 lks. dist. marked "T5S R40E S13 BT"
- Pine 12" diam. bears South 43° West 25 lks. dist. marked "T5S R40E S14 BT"
- Pine 20" diam. bears North 65° West 90 lks. dist. marked "T5S R40E S11 BT"

T 5 S R 40 E J-21



In survey No.323-83R G. Langlitz monuments corner from original GLO evidence. Union County monumentation record states:

Found the original corner monument, a basalt stone 16"x12"x3" laying loose on top of ground as well as remains of the 4 original bearing trees.

At the corner position established at the intersection of record distances measured along the slope from the original face of the original BT's, set a 2"x30" galvanized iron pipe, 24" in the ground on a steep North slope, with brass cap attached marked as shown below.

From which:

- 8" Douglas Fir scribed "T5S R40E S11 BT" on a double blaze bears North 52° West 20.5ft.
- 6" White Fir scribed "T5S R40E S12 BT" on a double blaze bears North 78° East, 40.9ft.
- 14" Western Larch scribed "T5S R40E S13 BT" on a double blaze bears South 77° East 86.6ft.
- 6" Western Larch scribed "T5S R40E S14 BT" on a double blaze bears South 68° West 34.7ft.

**DESCRIPTION OF CORNER EVIDENCE FOUND:**

I found a 2 ½" iron pipe with a 2 ½" brass cap shown below, 6" above ground.

An 18" diam. White Fir dead and down.

A 17" diam. Western Larch bears South 77° East, a dist. of 86.6' alive vigorous with healed blaze.

A 14" diam. Western Larch bears South 68° West, a dist. of 34.7' alive vigorous with healed blaze.

An 18" diam. Douglas Fir bears North 52° West, a dist. of 20.5' alive vigorous with healed blaze.

SEE SURVEY 050-2021

**DESCRIPTION ACCESSORIES I ESTABLISHED TO PERPETUATE THE ORIGINAL LOCATION OF THIS CORNER:**

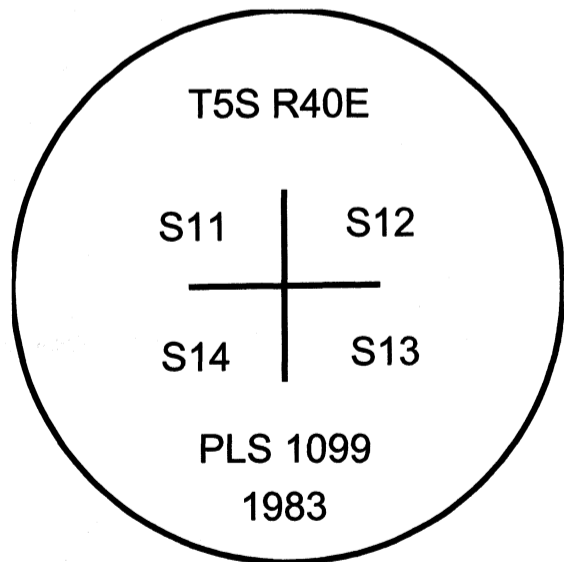
From 2 ½" pipe monument,

**NEW BEARING OBJECTS:**

A rock out crop 4'x2'x3' exposed bears South 85° East, a dist. of 9.25', marked "x BO" on South face.

I hereby certify that the corner was rehabilitated on October 6, 2021.

Witnesses:, Emmitt Ambert



REGISTERED  
PROFESSIONAL  
LAND SURVEYOR

OREGON  
June 2, 2010  
JEFFREY S. HSU  
83571

Renewal Date: June 30, 2023

**UNION COUNTY  
SURVEYOR**

Date Received 11/1/21

Date Filed 11/1/21

Filed By Nick G. Klein DEPUTY

File Number 046-2021R

I used a steel tape and magnetic compass in the establishment of the new accessories. I used 14° East declination, the distances and bearings are to the center of the chiseled 'X'.