

History of original corner establishment:

Original Survey of the line between Townships 4 and 5 South, Range 40 East was performed by John Stone, Deputy Surveyor under Contract No. 235, dated July 6, 1875.

East on a true line on South Boundary of Sec. 35, ...

50.00 chains Rock Bluff

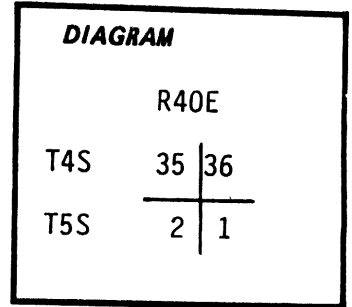
61.50 chains Tree in corner field bears North 7°30' East

80.00 chains Set a peaked stone 24"x14"x12 for Corner to Sections 35 and 36

Original Survey of subdivisions of T4S,R40E, also was performed by John Stone in 1875,

North between Sec. 35 and 36

34.50 chains Tree in S.E. Corner of field bears due West



Description of corner evidence found:

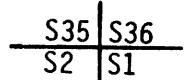
Found a basalt stone, 24"x16"x10" lying on its side, half buried, with two distinct grooves approx. 3 inches long on a face. No additional markings found. This stone is located in a gently sloping area near the bottom of a wide and shallow ravine. The nearest exposed bedrock in the area is located approximately 200 ft. South, very few other stones are visible nearby. Refer to the attached sketch for additional information concerning the relationship of the location of this stone to other references mentioned in the original survey notes.

Description of monument and accessories established to perpetuate the original location of this corner:

At the position of the found marked stone, we set a 2"x30" galvanized iron pipe, 27" in the ground, with brass cap attached, marked

Union Co. Surveyor  
R40E

T4S

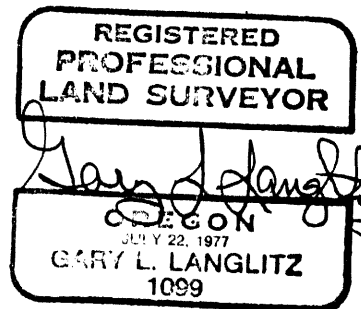


T5S

PLS 1099  
1984

Buried found stone upside down along north side of brass cap. Placed steel fence post approx. 5' east of monument with "Attention" sign attached. No accessories available.

July 25, 1984  
Gary Langlitz, Deputy County Surveyor  
Dave Dahlstrom, U.S. Forest Service



Office of..... County of.....

State of....., I hereby certify that the within instrument was filed in this office for record on the..... day of....., 19.....

..... by ..... (COUNTY OFFICIAL) (DEPUTY)

**UNION COUNTY SURVEYOR**

Date Received 7-30-84  
☆ GPO-798-276

Date Filed 7-30-84

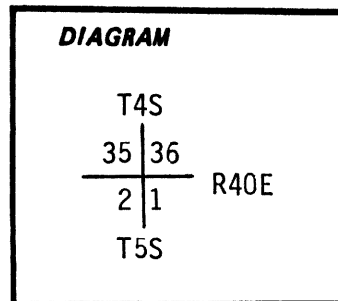
By G. LANGLITZ, DEPUTY

File No. 930-84R

CERTIFIED RECORD OF LAND CORNER MONUMENTATION

History of original corner establishment:

None



Description of corner evidence found:

None

BASIS OF BEARINGS BY SOLAR OBSERVATION.

MEASURED DISTANCES OBTAINED BY FIELD SURVEY DURING JULY, 1984



NOT TO SCALE

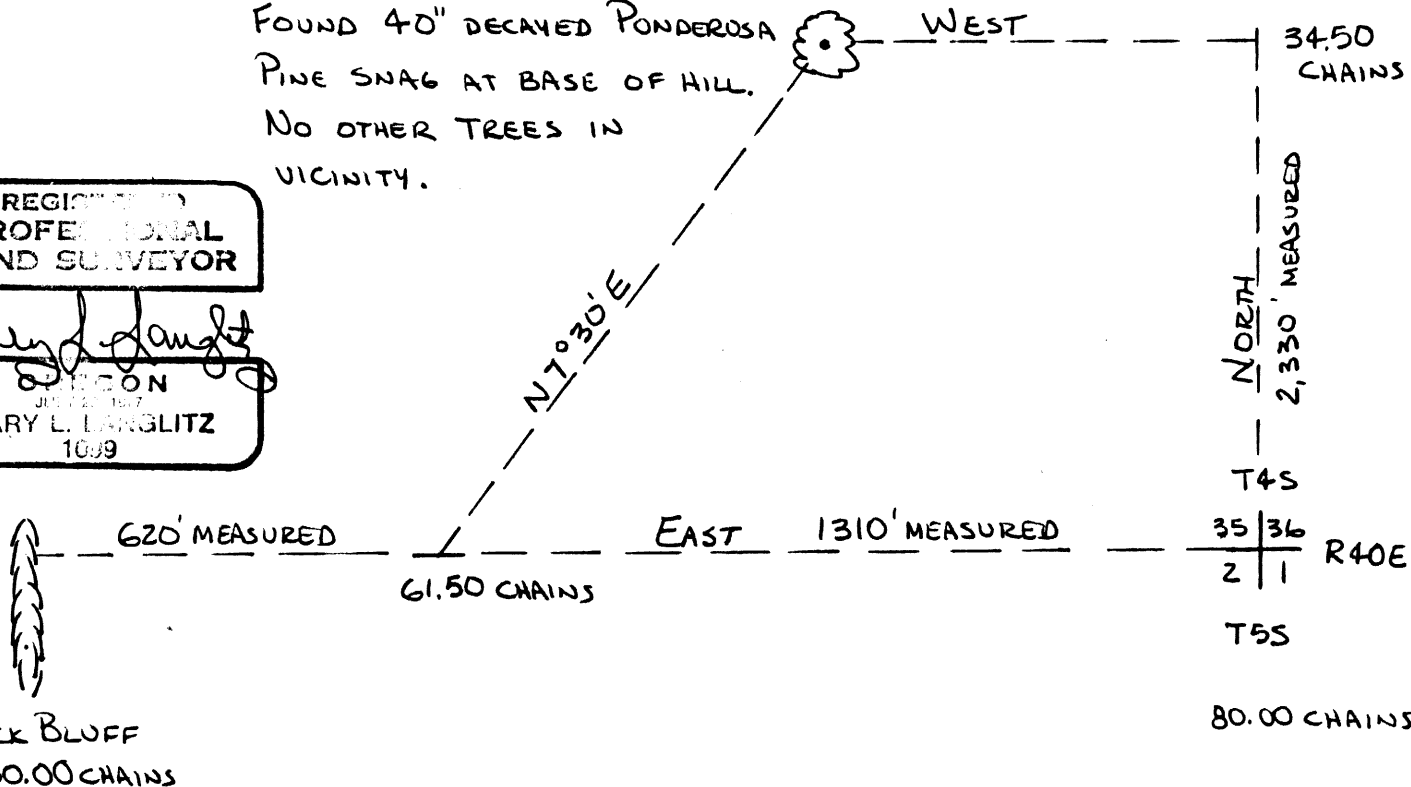
Description of monument and accessories I established to perpetuate the original location of this corner:

FOUND 40" DECAYED PONDEROSA PINE SNAG AT BASE OF HILL. NO OTHER TREES IN VICINITY.

REGISTERED PROFESSIONAL LAND SURVEYOR

*Gary L. Langlitz*

OREGON  
JULY 22, 1967  
GARY L. LANGLITZ  
1009



Office of..... County of.....  
State of..... I hereby certify that the within instrument was filed in this office  
for record on the..... day of....., 19.....

(COUNTY OFFICIAL)

(DEPUTY)

Form R6-7100-57 (9/71)

**UNION COUNTY SURVEYOR**

Date Received 7-30-84

★ GPO-798-276  
Date Filed 7-30-84

By G. LANGLITZ, DEPUTY

File No. 930-84 R