

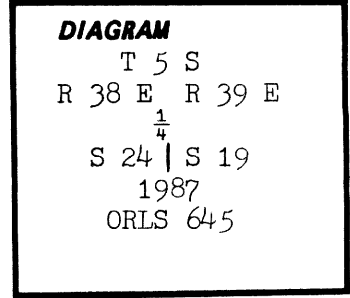
CERTIFIED RECORD OF LAND CORNER MONUMENTATION

History of original corner establishment:

This $\frac{1}{4}$ corner was set by deputy surveyor Timothy W. Davenport, under Contract No. 102, dated July 20, 1863. He states he set a $\frac{1}{4}$ sec. post from which:

- A pine 36" dia. bears S 52 W, 155 lks. dist.
- A pine 14" dia. bears N 15 E, 112 lks. dist.

Deputy surveyor W.B. Barr retraced this line under Contract No. 388, dated May 7, 1881. He states he found the $\frac{1}{4}$ corner agreeing with description but post had decayed. He planted a basalt rock 18" x 10" x 6".



Description of corner evidence found:

At the assumed $\frac{1}{4}$ corner location I found that a logging road had been built over the corner thus destroying or burying the stone. I also found a badly burnt and rotted pine stump approximately 40" dia. and fitting the GLO description for the bearing tree located in Sec. 24. Bearing tree in Sec. 19 has been destroyed during road construction.

Description of monument and accessories I established to perpetuate the original location of this corner:

Accepting the remains of the bearing tree in Sec. 24 I then re-set the $\frac{1}{4}$ corner to its original position being N 52 E, 155 lks. from the stump. This position appears correct by survey so I set an Alum. cap on a 2" x 30" pipe, with a magnet fixed in the cap, at the corner location. I buried the pipe to within 8" above the surface of the ground. I then placed a mound of stone $3\frac{1}{2}$ feet dia. and 1 foot high covering the monument. From which I set two new bearing trees:

- A pine 9" dia. bears N 55 19 W, 82.00 feet and scribed $\frac{1}{4}$ S S 24 BT.
- A pine 6" dia. bears N 82 31 E, 86.46 feet and scribed $\frac{1}{4}$ S S 19 BT.

UNION COUNTY SURVEYOR	
Date Received <u>9-22-87</u>	
Date Filed <u>9-25-87</u>	
By <u>G. LANGRISH, Deputy</u>	
File No. <u>127-87 R</u>	

REGISTERED PROFESSIONAL LAND SURVEYOR	
<i>James H. Hambleton</i>	
9-25-87	
OREGON JULY 10, 1964 JAMES H. HAMBLETON 645	

REFER TO SURVEY 28-87

Office of..... County of.....
 State of....., I hereby certify that the within instrument was filed in this office
 for record on the..... day of....., 19.....
 by
 (COUNTY OFFICIAL) (DEPUTY)

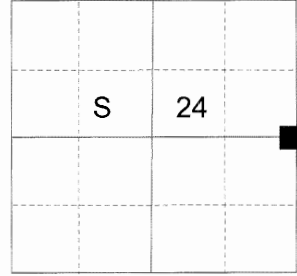
CERTIFIED RECORD OF LAND CORNER MONUMENTATION

HISTORY OF ORIGINAL CORNER ESTABLISHED:

Corner originally established by Timothy W. Davenport under GLO contract no. 102, dated July 20, 1863. Surveyor General field notes state:

T 5 S R 38 E P-25

Set qr. Sec. post on East slope of ridge from which:
A Pine 36 in. dia. bears S52°W, 155 lks. dist.
A Pine 14 ins. dia. bears N15°E, 112 lks. dist.



In Survey Number 28-87, James Hambleton sets the corner from the remains of the Southwest bearing tree. Union County Monumentation record 127-87R states: Accepting the remains of the bearing tree in Sec. 24, I then reset the 1/4 corner to its original position being N52°E, 155 lks. from the stump. This position appears correct by survey so I set an Alum. cap on a 2" x 30" pipe, with a magnet fixed in the cap at the corner location. I buried the pipe to within 8" above the surface of the ground. I then placed a mound of stone 3 1/2 feet dia. and 1 foot high covering the monument. From which I set two new bearing trees:
A pine 9" dia. bears N55°19'W, 82.00 feet and scribed 1/4S S24 BT.
A pine 6" dia. bears N82°31'E, 86.46 feet and scribed 1/4S S19 BT.

DESCRIPTION OF CORNER EVIDENCE FOUND:

I find no aluminum pipe, as described in Union County Monumentation records 127-86R. At a distance intersection from the bearing trees, I dig and unearth an aluminum flange, approximately 30" below grade, which I assume to be a part of the Hambleton monument. Corner position falls on East side of a logging road and the monument was probably removed by grading. From this position:

An 14" Ponderosa Pine bears North 82° East, a distance of 86.50 feet, alive and vigorous with healed blaze.
A 18" Ponderosa Pine bears North 55° West, a distance of 82.00 feet, alive and vigorous with healed blaze.
A t-post marking the original bearing tree bears South 52° West, a distance of 101.1 feet.

SEE SURVEY NUMBER 010-2017

DESCRIPTION OF MONUMENT AND ACCESSORIES I ESTABLISHED

TO PERPETUATE THE ORIGINAL LOCATION OF THIS CORNER:

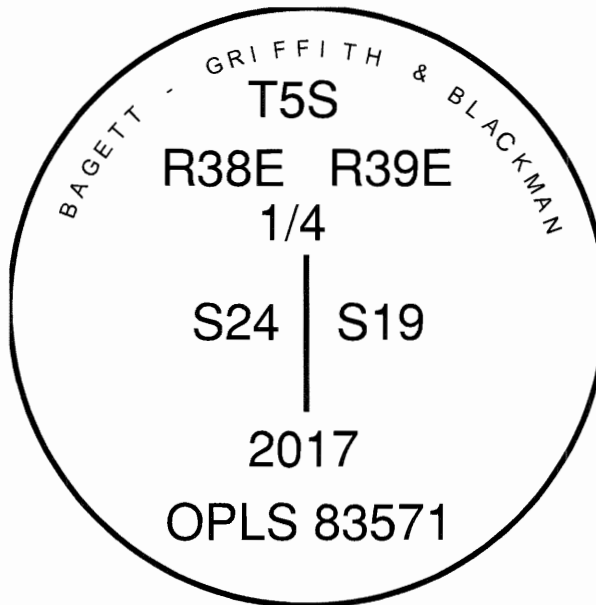
At record bearing and distance from the Hambleton bearing trees, I set a 5/8" x 30" copperclad iron pin with 2 1/2" brass cap, marked as shown below, 38 inches in the ground, from which:

NEW BEARING OBJECTS:

A 5/8" x 20" iron pin bears South 6° East, a distance of 11.21 feet, with 1 1/2" aluminum cap marked BGB SURVEY MARKER S RP.
A 12" Ponderosa Pine bears North 89° West, a distance of 16.90 feet, marked 1/4 S24 BT.

I set a steel fencepost approx 2 ft East of the corner monument. I hereby certify that the corner was monumented April 6, 2017.

UNION COUNTY SURVEYOR
Date Received 4/11/17
Date Filed 4/11/17
Filed By [Signature]
File Number 004-2017R



REGISTERED PROFESSIONAL LAND SURVEYOR

OREGON
June 2, 2010
JEFFREY S. HSU
83571

Renewal Date: June 30, 2017

I used a steel tape and magnetic compass in the establishment of the bearing trees. Magnetic declination used was 13° East. Bearings and distances are to the center of the tree.

HORIZONTAL CONTROL DATA

UNION COUNTY, OREGON

OREGON STATE PLANE, NORTH ZONE (3601)

STA NAME: 2017006

1/4 SECTION CORNER COMMON TO SECTIONS 19 AND 24

TWP. 5 S. RGE. 38 & 39 E. GEODETIC COORD: NAD 83(91)

DATE TIED: April 6, 2017 LAT: 45 ° 6 ' 54.82784 " N

SURVEYOR: RICK G. ROBINSON OPLS 2219 LONG: 117 ° 59 ' 37.82281 " W

FIRM: BAGETT, GRIFFITH, & BLACKMAN SP. COOR: NAD 83(91)
 2006 ADAMS AVENUE
 LAGRANDE, OR 97850 N: 538137.381 INT FT.
 (541) 963-6092 E: 8848930.478 INT FT.

TYPE: GPS THETA: 1 ° 46 ' 38.4019048 "

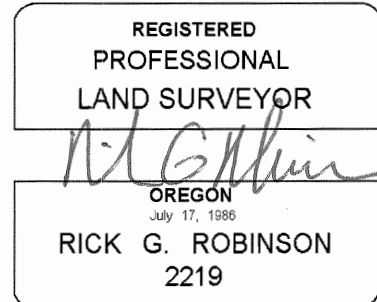
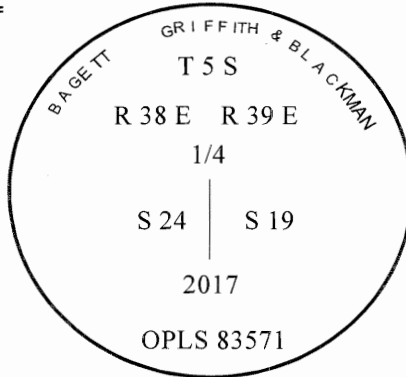
ORDER: SECOND CLASS: 1 SCALE FACTOR: 0.9998950168

ELEV: 3880.30 US FT.

ELEV: DATUM: NGVD 29

COMMENTS:

2 1/2" brass cap monument marked
 as shown, in East side of logging road



Renewal Date: December 31, 2018

1 METER = 3.2808333333... US FEET = 39.37 INCHES

1 METER = 3.280839895 INT'L FEET OR 1 INCH = 2.54 CM

TO CALCULATE ELEVATION FACTOR (IN THE NORTH AMERICAN CONTINENT)

DIVIDE 20,906,000 BY (20,906,000 + ELLIPSOID ELEV. IN FEET)