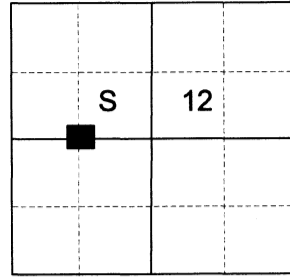


**CERTIFIED RECORD OF LAND CORNER MONUMENTATION**

**HISTORY OF ORIGINAL CORNER ESTABLISHED:**

Corner not previously established.

T 5 S R 38 E G-22



**DESCRIPTION OF CORNER EVIDENCE FOUND:**

None found.

SEE SURVEY 046-2021

**DESCRIPTION OF MONUMENT AND ACCESSORIES I ESTABLISHED TO MONUMENT THE ORIGINAL LOCATION OF THIS CORNER:**

At position by Survey I set a 5/8" x 30" iron pin, 29" in the ground, with 2 1/2" aluminum cap marked as shown below, in a 1 ft diam. mound of stone base to top of cap, from which:

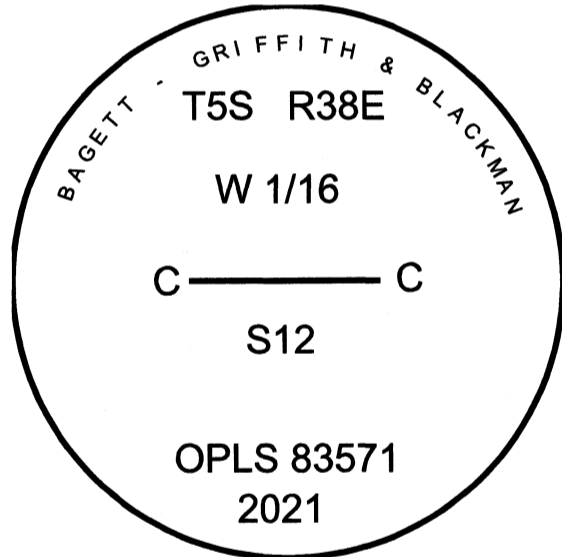
**NEW BEARING OBJECTS:**

A 7" Western Larch bears South 40° West, a dist. of 5.95 ft., marked CW 1/16 S12 BT  
An 8" Lodgepole Pine bears North 9° West, a dist. of 14.90 ft., Marked CW 1/16 S12 BT

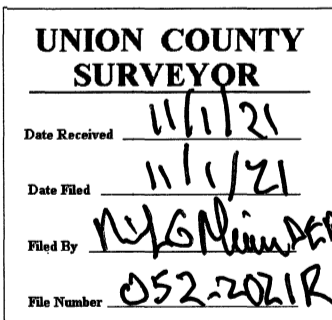
Set steel fence post approx. 1 ft. North

I hereby certify that the corner was monumented on October 13, 2021.

Witnesses: Kyle Tucker, Emmitt Ambert



Renewal Date: June 30, 2023



I used a steel tape and magnetic compass in the establishment of the new accessories. I used 14° East declination. Distances are to a 60d spike driven into the right side of the root crown of the bearing trees. Bearings are to a brass washer marked OPLS 83571 in the BT blaze of the new bearing trees.