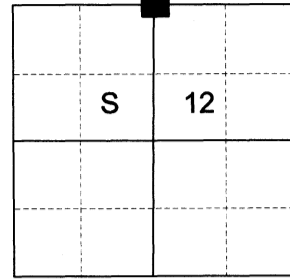


CERTIFIED RECORD OF LAND CORNER MONUMENTATION

HISTORY OF ORIGINAL CORNER ESTABLISHED:

Corner originally established under GLO Contract No. 388, executed by W.B. Barr, dated May 7, 1881
 Surveyor General field notes state: Marked basalt rock 14x12x8 for 1/4 sec. corner, from which:
 Pine 12 in. diam. bears S64°E 13 lks. dist.
 Fir 10 in. diam. bears N12°W 32 lks. dist.

T 5 S R 38 E E-23



DESCRIPTION OF CORNER EVIDENCE FOUND:

Found a heavily decayed stump with BT scribes visible and facing Northwesterly on an 8" x 24" stump remnant. At record distance and bearing from found original SE BT. I find many stones but none with discernible marks. At record distance and bearing from there I do find a heavily rotted stump for the NW BT but no scribe marks.

SEE SURVEY 046-2021

DESCRIPTION OF MONUMENT AND ACCESSORIES I ESTABLISHED TO PERPETUATE THE ORIGINAL LOCATION OF THIS CORNER:

At record distance and bearing from found original bearing tree I set a 2 1/2" x 30" aluminum pipe, 22" in the ground, with a 3" aluminum cap marked as shown below in a mound of stone 4 ft. in diam., from which:

NEW BEARING OBJECTS:

- A 8" Douglas Fir bears North 44° East, a dist. of 4.90 ft., marked 1/4 S1 BT.
- A 5" Ponderosa Pine bears South 76° East, a dist. of 11.30 ft., marked 1/4 S12 BT.
- A 8" Douglas Fir bears South 65° West, a dist. of 33.25 ft., marked 1/4 S12 BT.
- A 9" Ponderosa Pine bears North 44° West, a dist. of 16.05 ft., marked 1/4 S1 BT.

Set a steel fence post approx. 1 foot westerly

I hereby certify that the corner was monumented on October, 01 2021.

Witness: Kyle A. Tucker, Emmitt C. Ambert

REGISTERED
PROFESSIONAL
LAND SURVEYOR

OREGON
June 2, 2010
JEFFREY S. HSU
83571

Renewal Date: June 30, 2023

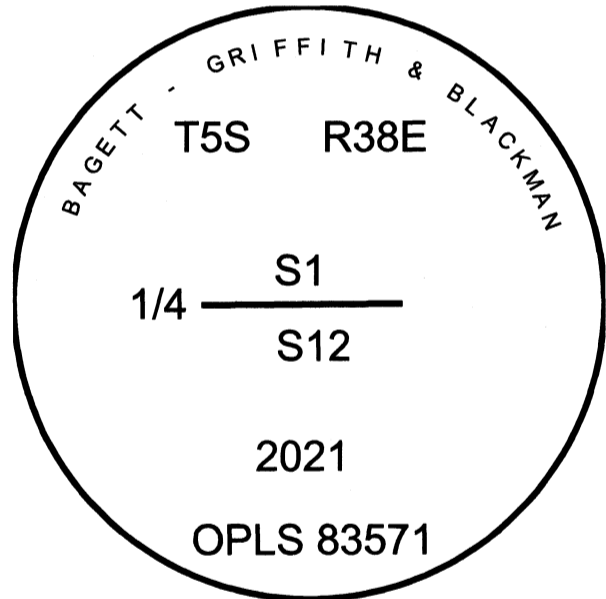
**UNION COUNTY
SURVEYOR**

Date Received 11/1/21

Date Filed 11/1/21

Filed By Mark G. Deary

File Number 051-2021R



I used a steel tape and magnetic compass in the establishment of the new accessories. I used 14° East declination. Distances are to a 60d spike driven into the right side of the root crown of the bearing trees. Bearings are to a brass washer marked OPLS 83571 in the BT blaze of the new bearing trees.