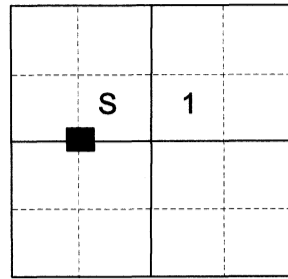


CERTIFIED RECORD OF LAND CORNER MONUMENTATION

HISTORY OF ORIGINAL CORNER ESTABLISHED:

Corner not previously established.

T 5 S R 38 E C-22



DESCRIPTION OF CORNER EVIDENCE FOUND:

None found.

SEE SURVEY 046-2021

DESCRIPTION OF MONUMENT AND ACCESSORIES I ESTABLISHED TO PERPETUATE THE ORIGINAL LOCATION OF THIS CORNER:

At position by Survey I set a 5/8" x 30" iron pin, 29" in the ground, with 2 1/2" aluminum cap marked as shown below, with 2' diam. collar of stone, from which:

NEW BEARING OBJECTS:

An 8" Ponderosa Pine bears North 80° East, a dist. of 45.53 ft., marked CW 1/16 S1 BT
A 10" Ponderosa Pine bears South 58° West, a dist. of 21.10 ft., marked CW 1/16 S1 BT

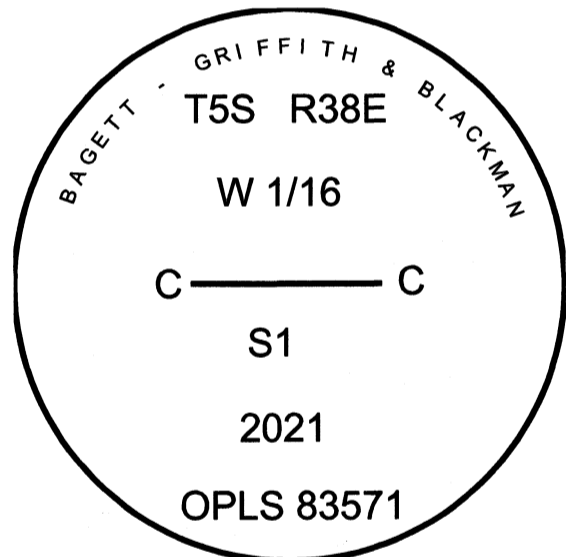
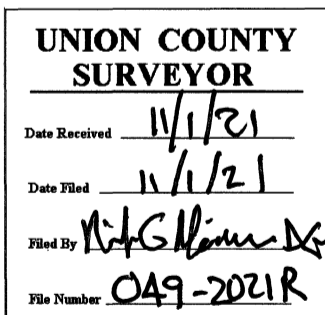
Set steel fence post approx. 1 ft. South

I hereby certify that the corner was monumented on October 13, 2021.

Witnesses: Kyle Tucker, Emmitt Ambert



Renewal Date: June 30, 2023



I used a steel tape and magnetic compass in the establishment of the new accessories. I used 14° East declination. Distances are to a 60d spike driven into the right side of the root crown of the bearing trees. Bearings are to a brass washer marked OPLS 83571 in the BT blaze of the new bearing trees.