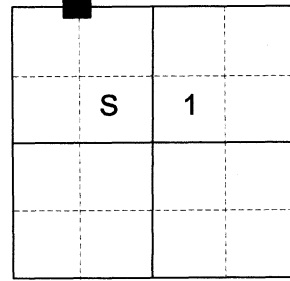


CERTIFIED RECORD OF LAND CORNER MONUMENTATION

HISTORY OF ORIGINAL CORNER ESTABLISHED:

Corner not previously established.

T 5 S R 38 E A-22



DESCRIPTION OF CORNER EVIDENCE FOUND:

None found.

SEE SURVEY 046-2021

DESCRIPTION OF MONUMENT AND ACCESSORIES I ESTABLISHED TO PERPETUATE THE ORIGINAL LOCATION OF THIS CORNER:

At position by Survey I set a 5/8" x 30" iron pin, 28" in the ground, with 2 1/2" aluminum cap marked as shown below, with 3' diam. collar of stone, from which:

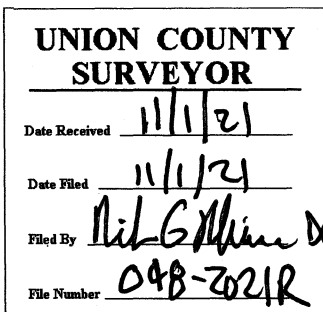
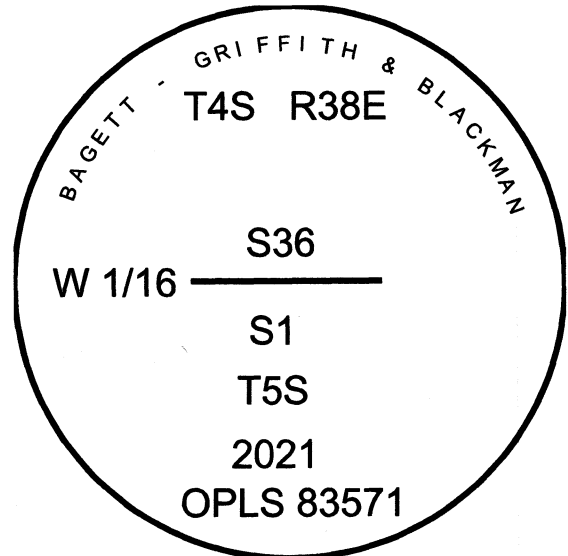
NEW BEARING OBJECTS:

A 10" Douglas Fir bears North 32° East, 8.60 ft dist. marked w 1/16 S36 BT
An 8" Douglas Fir bears South 61° East, 17.70 ft marked W 1/16 S1 BT

Set steel fence post approx. 1ft. East

I hereby certify that the corner was monumented on October 1, 2021.

Witnesses: Kyle Tucker, Emmitt Ambert



I used a steel tape and magnetic compass in the establishment of the new accessories. I use 14° East declination. Distances are to a 60d spike driven into the right side of the root crown of the bearing trees. Bearings are to a brass washer marked OPLS 83571 in the BT blaze of the new bearing trees.