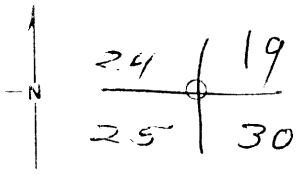


USDA-FOREST SERVICE D-7100-52(2/82)

Index File No. R 1 CORNER RECORD (SEARCH) Contract or Survey No. \_\_\_\_\_ Cor. No. \_\_\_\_\_  
T 55 R. 37 E R.D. LaGrande County Union SW Cor. of Section 19  
Merid. Will N.F. W-W State Oregon

CORNER DIAGRAM per legend



DESCRIBE CORNER MONUMENT FOUND  
None

DESCRIBE BEARING TREES OR OTHER OFFICIAL ACCESSORIES FOUND  
Sec. 24 - 22" WL live Scribe visible  
Sec. 25 - 26" WL dead standing, Scribe visible  
Sec. 30 26" WL live Scribe visible

PHOTO IDENTIFICATION DATA  
Photo No. \_\_\_\_\_  
Filed At \_\_\_\_\_  
Object Ident. \_\_\_\_\_  
Ident. By \_\_\_\_\_  
Signature \_\_\_\_\_

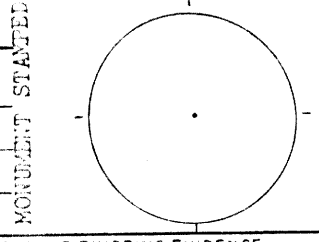
DESCRIBE CORNER LOCATION RELATIVE TO NEAR-BY FEATURES, ALSO HOW TO REACH CORNER  
South of Park Saddle Trail about 300'  
below opening on flat ground adjacent  
to a lodge pole stand

CORNER LEGEND:  
FS or Unverified  
Contr. Other  
○ ◇ Searched For/Not Found  
⊗ ⊗ Evidence Found/Accept.  
● ● Permanent Mon. Set/Pd.

Searched By: Dave Dahlstrom Title CET Division LaGrande Headquarters \_\_\_\_\_ Date 6-28-85

CORNER RECORD (PERPETUATION)

MONUMENT DESCRIBE NEW MONUMENT SET, OR WORK DONE TO PRESERVE EXISTING MONUMENT  
Place 54-3 & 54-4 signs and painted  
all BT's



ACCESSORIES DESCRIBE NEW BT'S WITNESS OBJECTS ETC. ESTABLISHED OR WORK DONE TO PRESERVE EXISTING EVIDENCE  
More History - 4 ch north 4' high rocks

Work Done By \_\_\_\_\_ Title \_\_\_\_\_ Date \_\_\_\_\_ State Registration No. or Agency \_\_\_\_\_  
Plat or Certified Cor Record Prepared? Yes No Filed At \_\_\_\_\_ Co. Surveyor's Office Date \_\_\_\_\_

History 75 ch ascend through timber A Pine 4" on st South Slope  
of in SW margin of young pine  
Surveys, WL 24" N63 W 114 Lks  
G.L.O., WL 20" S43 W 100 Lks 16'  
etc. WL 20" S16 E 18 Lks Pine 5" N8 E 9 Lks

Index File No. \_\_\_\_\_ T. \_\_\_\_\_, R. \_\_\_\_\_, Contract or Surv. No. \_\_\_\_\_ Cor. \_\_\_\_\_

**UNION COUNTY SURVEYOR**  
Date Received \_\_\_\_\_  
Date Filed 12-23-87  
By G. LANGLITZ, DEPUTY  
File No. 359-87R

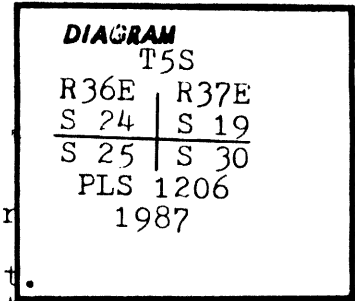
R-1

CERTIFIED RECORD OF LAND CORNER MONUMENTATION

R-1

**History of original corner establishment:**

J. C. Cooper conducted the survey of the First Standard Parallel, Township 5 South, Ranges 34, 35, 36, and 37 East, W.M., together with additional Township and Range lines, under GLO contract No. 397 dated July 14, 1881.



Cooper scribed a 4" dia. pine tree for the corner point, from which:

- A tamarack 24" dia. bears N 63 W at 114 lks. dist.
- A tamarack 30" dia. bears S 43 W at 100 lks. dist.
- A tamarack 30" dia. bears S 16 E at 18 lks. dist.
- A pine 5" dia. bears N 8 E at 9 lks. dist.

**Description of corner evidence found:**

Found a root hole as evidence of the original corner tree.

**BT's-**

- A live 20" dia. Western Larch bears N 63 W at 114 lks. dist., mkd. S R36 S24 BT. on partially healed blaze.
- A dead, 22" dia. 40' high, standing Western Larch snag bears S 43 W at 100 lks. dist., mkd. BT on partially healed blaze.
- A live 26" dia. Western Larch bears S 16 E at 18 lks. dist. mkd. with healed blaze.
- A stump hole bears N 8 E at 9 lks. dist.

**Description of monument and accessories established to perpetuate the original location of this corner:**

At the point previously occupied by the original corner tree, set a 2½" x 30" aluminum pipe 24" into the ground, with no stone mound, 2½" dia. aluminum cap mkd. as shown in the corner diagram.

From the corner point: (New BT's)

- A 11" dia. Spruce bears N 47 E at 61.8 ft. dist., mkd. T5S R37E S19 BT.
- A 11" dia. Western Larch bears S 19 W at 118.1 ft. dist. mkd. T5S R36E S25 BT.

Attached U.S.F.S. 54-9 and 54-3 signs to the bearing trees, and painted the blaze and a 6" band around the bearing trees red. Attached a ¾" dia. brass I.D. washer mkd. PLS 1206, between the B and T scribes. Set a steel fence post 4' South with U.S.F.S. 54-9 sign attached. Used 18½° declination on a staff compass for readings to the bearing trees, and used a steel tape to measure to a nail set in the side of the bearing trees at the base.

This corner was monumented to U.S.F.S. specifications on August 17, 1987, witnessed by Larry McBroom and Tim Rouse.

<b>UNION COUNTY SURVEYOR</b>	
Date Received	<u>5-1-89</u>
Date Filed	<u>5-15-89</u>
By	<u>G. LANGRIZ DEPUTY</u>
File No.	<u>73-89R</u>

Office of County Surveyor ..... County of Union  
 State of Oregon ..... I hereby certify that the within instrument was filed in this office  
 for record on the ..... day of ..... , 19.....

..... by .....  
 (COUNTY OFFICIAL) (DEPUTY)

Form R6-7100-57 (9/71)

**REGISTERED  
PROFESSIONAL  
LAND SURVEYOR**

*James D. Hanley*  
**OREGON**  
 SEPTEMBER 21, 1977  
 JAMES D. HANLEY  
 1206